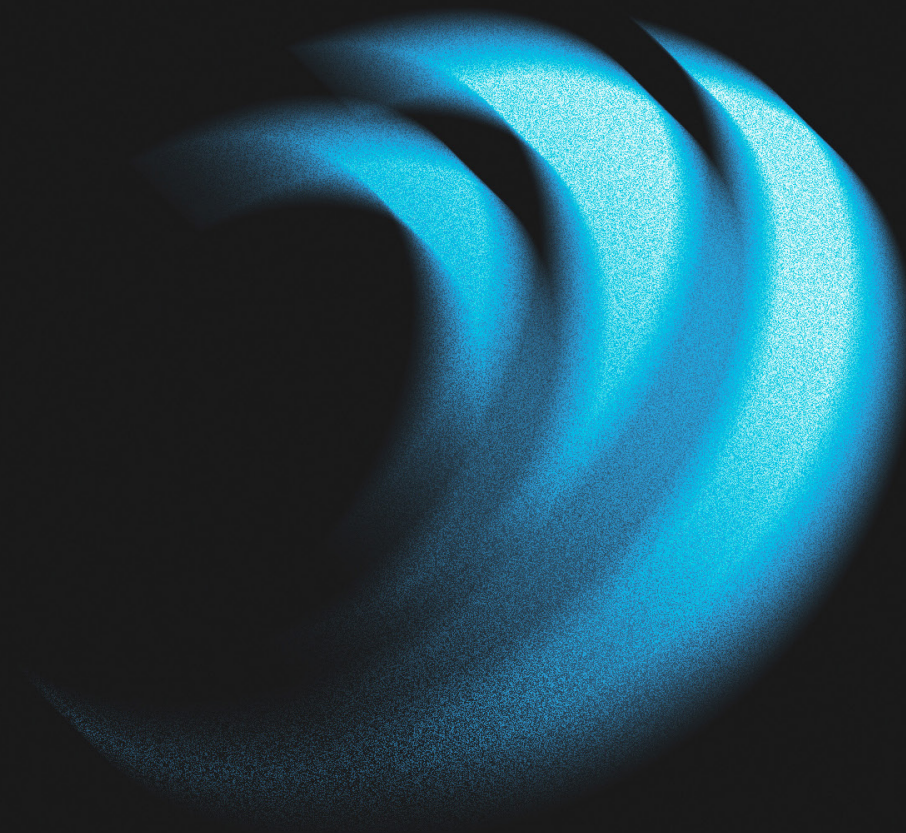




# LED

## STRIP LIGHT JEN-FC-528

DC 12/24V  
FREE CUT





JEN-FC-528-12/24(HS ) | Free Cut

FEATURES

- Free cut, R2R design.
- Uniform lighting, no light spots, no shadows.
- Shorter heat dissipation path, lower thermal resistance.
- Energy-saving and environmentally friendly, compliant with ROHS & REACH environmental standards.
- DC 24V constant voltage design with minimal voltage drop.



135°



12/24V



5Years



IP20











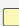

DIMMABLE

DIMENSION

Input voltage: DC 12/24V	Tape IP: IP20
Ra: >90	Warranty: 5years
Rated power: 13W	Working temperature: -20~+45°C
Power error range: ±10%	Storage temperature: -20~+70°C



OPTICAL & ELECTRICAL PARAMETERS

Model No.	Voltage	Ra	Color	CCT	Lm/m	Lm/W	W/m
JEN-FC-528-12(HS)-8mm	12V DC	>90	W	 2700K	1105	85	13
				 3000K	1170	90	
				 4000K	1235	95	
				 5000K	1235	95	
				 6500K	1235	95	
JEN-FC-528-24(HS)-8mm	24V DC	>90	W	 2700K	715	55	13
				 3000K	780	60	
				 4000K	910	70	
				 5000K	910	70	
				 6500K	910	70	

OTHER PARAMETERS

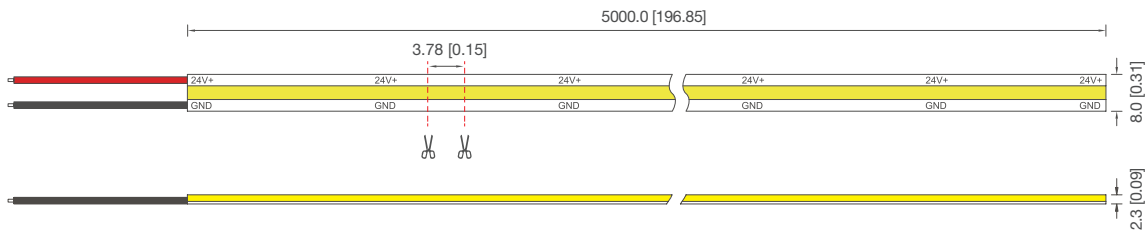
Model No.	LED Qty (pcs/m)	Standard Packing Length (mm)	Max Run (m)	Min. Cutting Unit (mm)
JEN-FC-528-12(HS)-8mm	528	5000	3	3.78
JEN-FC-528-24(HS)-8mm	528	5000	6	3.78

NOTE:

- Test environment temperature is 25±2°C.
- The above data was measured under standard conditions and actual data may be different. We would update data without further notice.
- The above luminous flux data is based on corresponding light color.
- If the selected LED chip is different, the color temperature and luminous flux will change accordingly.
- \*The light efficiency is based on the measured values.
- \*Typical luminous flux and power error are ± 10%.
- \*The Max run length is based on one end power feed.
- \*If the product power is greater than 15W, auxiliary heat dissipation appliances must be added.

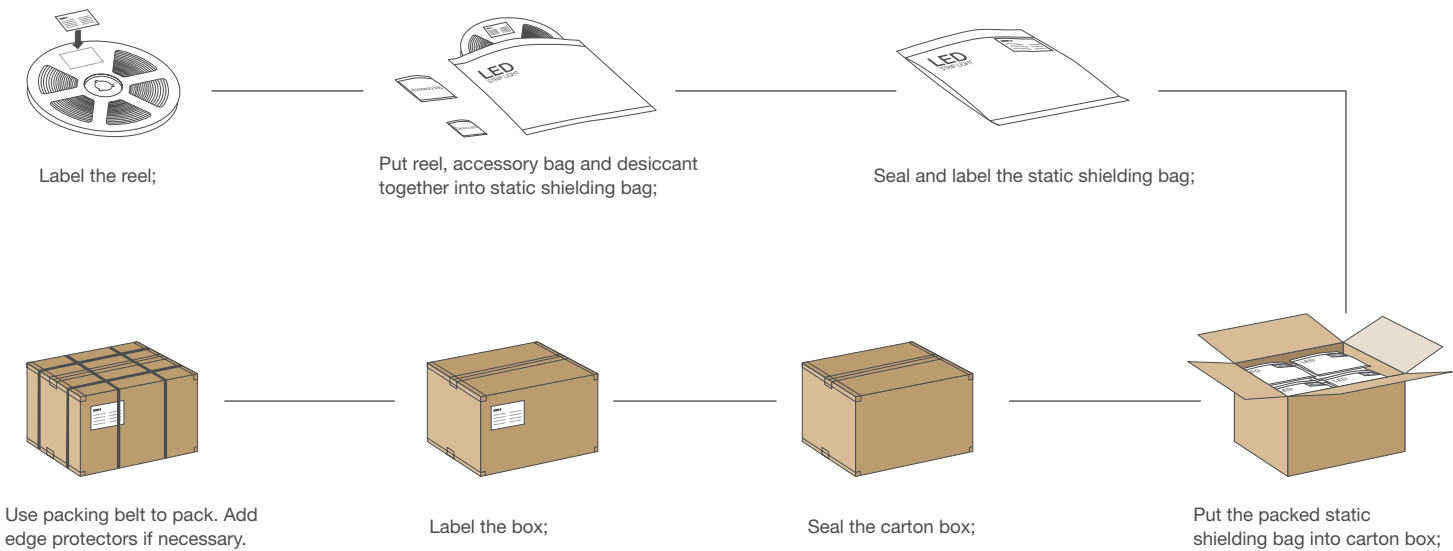
PROFILE DRAWINGS

Unit: mm[inch]



Note: for more info, please contact sales rep.

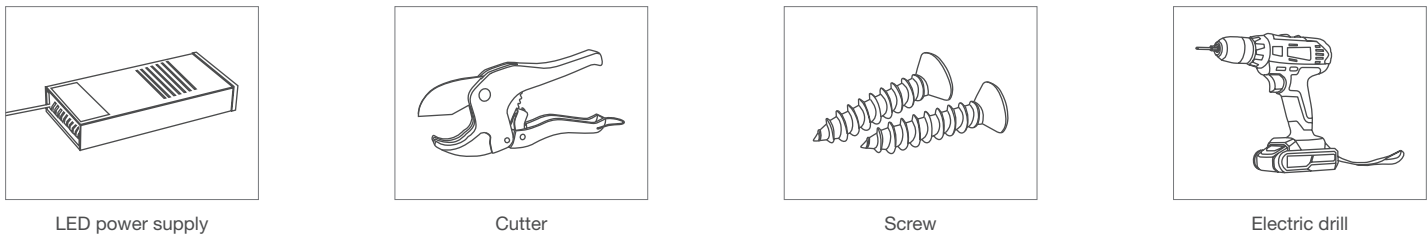
PACKAGING INFORMATION



Model No.	Product Size L*W (mm)	Carton Size (mm)	Meter/Reel	Reel/Carton	Net Weight (kg)	Gross Weight (kg)
JEN-FC-528-12/24(HS)-8mm	5000*8	480*480*220	5	100	11.3(1±10%)	13.5(1±10%)

NOTE:  
The above-mentioned packaging quantity and weight are only for the illustrated packaging method. For other packaging methods, the packaging quantity and weight will be different. The actual weight is subject to the actual product.

INSTALLATION TOOLS



## INSTALLATION METHODS AND STEPS

### Aluminum channel installation



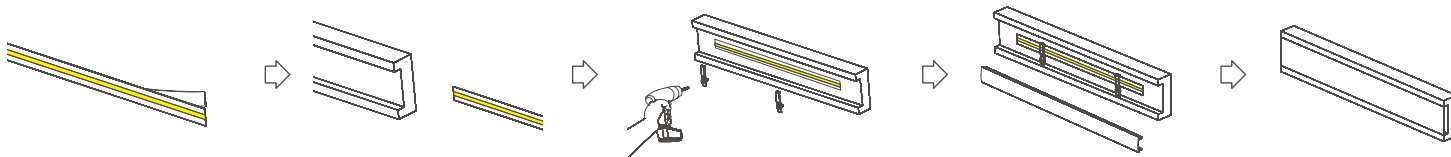
Peel away the self adhesive tape on the back of strip.

Cut off the excess part based on the installation position.

Evenly arrange the strips with appropriate space in the track.

Install the cover and end cap.

### Covered channel installation



Peel away the self adhesive tape on the back of strip.

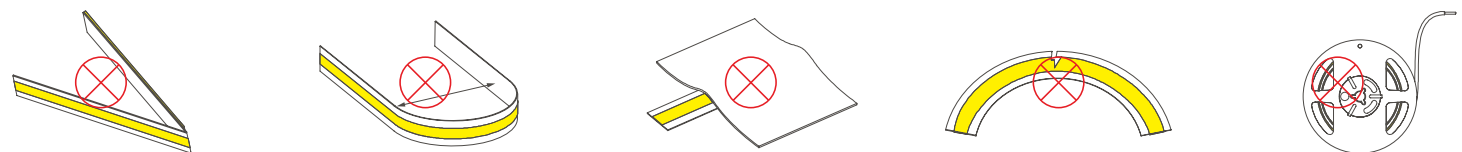
Cut off the excess part based on the installation position.

Evenly arrange the strips with appropriate space in the track and fix them with clips.

Install the cover and end cap.

Finished.

## WARNING MARK



Do not fold the LED strip

Can not bend less than min bending diameter.

Do not cover the LED strip

Do not bend the LED strip horizontally

Do not light on the LED strip when it is on the reel

## ATTENTIONS BEFORE INSTALLATION

- Before installation, please check whether the parameters of the product are consistent with the requirements (Seeing the Product Specification or Label).
- The voltage, current, and power of the power supply and load used must be consistent with this product.
- Follow the instructions of wiring diagram (first connect the load and then the power supply) to avoid short circuit.
- Product wires must be correctly connected to the positive and negative terminals of the power output, otherwise the light will not turn on.
- The power cord should be tightly screwed into the terminal, with a recommended tightness that cannot be pulled out by hand.
- The connection terminals must be effectively waterproof and corrosion-resistant.
- If the working length exceeded the max run length, make sure to have extra power supply.
- If it needs higher current of a LED, make sure having extra cooling.

## WARNING

- Do not disassemble or retrofit the light. Do not touch the surface of the light with a sharp object.
- Do not do live-line working during installation, especially for high voltage product.
- Do not use any organic chemical solvents.
- Use neutral glass adhesive to fix this product and it needs to be dried 4 hours in the open environment after operation.
- Treat the ends and the circuit connection points that are not connected to the main line with insulation, waterproof, and anti-corrosion in the installation.
- Use 18AWG (0.75mm<sup>2</sup> cross-sectional area) or thicker core wire to avoid adverse consequences caused by overheating, if the power cable need to lengthen.
- Make sure the input voltage meets the requirements and lines are connected correctly before lighting on.
- This product is for signage, and do not use as general lighting.
- Series connection within the max run.
- The length of the power cable between the power supply and the led strip should not exceed 2 meters. Otherwise, large circuit loss will lead to inconsistent brightness.
- Installation, maintenance and repair should be operated by a qualified technician.

Version	Content	Date
C1.1	Update: Basic Parameters	2025-11-14

BLUEVIEW ELEC-OPTIC TECH CO.,LTD

- ☐ Tel: +86-28-8148 0011
- ☐ Web.: [www.blueviewled.com](http://www.blueviewled.com)
- ☐ Fax: +86-28-8148 1258
- ☐ Email: [sales@blueviewled.com](mailto:sales@blueviewled.com)
- ☐ Add.: No. 1000, Section 2, Konggang 2nd Road, Shuangliu, Chengdu 610207, Sichuan, CHINA