



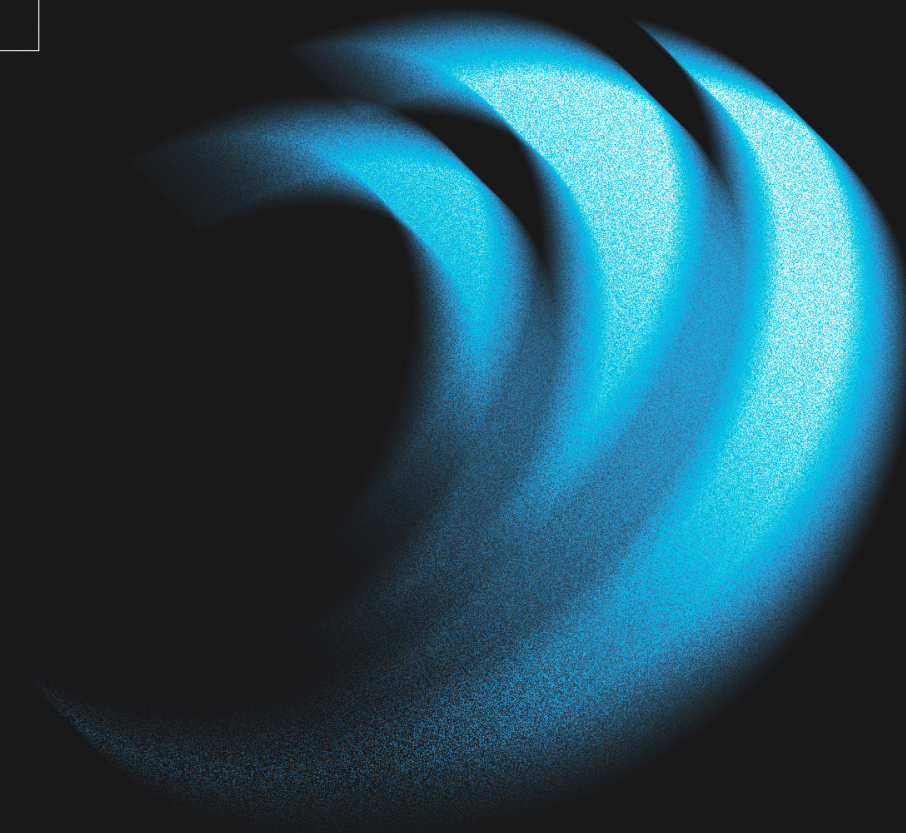
LED NEON

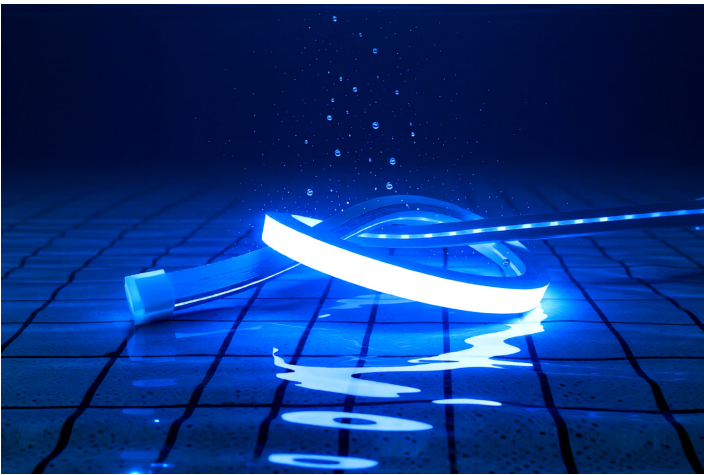
DC 24V

Underwater Neon

UMF2222

Multi-color





UMF2222 (Multi-color) | Underwater Neon

FEATURES

- Chlorine-resistant & salt-corrosion-resistant, ideal for long-term use in shallow-water environments.
- Special craftsmanship allows free bending and twisting without damaging the PCB or electronics.
- Enhanced waterproof structure ensures reliable performance and durability under continuous shallow-water exposure.
- Custom lengths available; product is non-cuttable.
- Certified to UL676.



APPLICATION

Widely used in various shallow-water settings such as swimming pools, fish ponds, decorative ponds, landscape lakes, and waterpark areas.
Depth limitation: Maximum installation depth must not exceed 3 meters.

INSTALLATION

Install at least 0.1 m below the water surface, using 316 stainless steel mounting clips.

Note: Do not place wiring connections or cable ends in water. Any damage caused by immersing wiring or cable ends in water will not be covered by our responsibility.

OPTICAL & ELECTRICAL PARAMETERS

Model No.	Voltage	Ra	Color	CCT/Color Available	Lm/m	Lm/W	W/m
UMF2222-WN	24V DC	>90	W	2700K	295	41	7.2
			N	6000K	345	48	7.2
			W+N	--	648	45	14.4
UMF2222-PTW-WN	24V DC	>90	W	2700K	56	28	2.0
			N	6000K	432	30	14.4
			W+N	--	216	30	7.2
UMF2222-RGB	24V DC	\	R	--	138	27	5.12
			G	--	230	45	5.12
			B	--	25	5	5.12
			RGB	--	399	26	15.36
UMF2222-RGBW	24V DC	>90	W	2700K	230	40	5.76
				3000K	236	41	
				3500K	247	43	
				4000K	247	43	
				5000K	242	42	
		\	R	--	119	26	4.6
			G	--	216	47	
			B	--	27	6	
		\	RGBW	W:2700K	568	291	19.58
				W:3000K	587	30	
				W:3500K	607	31	
				W:4000K	607	31	
				W:5000K	607	31	

OTHER PARAMETERS

Model No.	LED Qty (pcs/m)	Dimension W*H (mm)	Max Run(m)	Min. Cutting Unit (mm)	Min.Bending Diameter (mm)	
					Top	Side
UMF2222-WN	168	22*22	10	23.81	200	500
UMF2222-PTW-WN	168	22*22	10	23.81	200	500
UMF2222-RGB	84	22*22	15	35.71	300	600
UMF2222-RGBW	72	22*22	10	41.67	300	800

☐ Working Temperature: -20~+60°C

☐ Storage Temperature: -20~+70°C

Note: Max run is based on one end power feed.

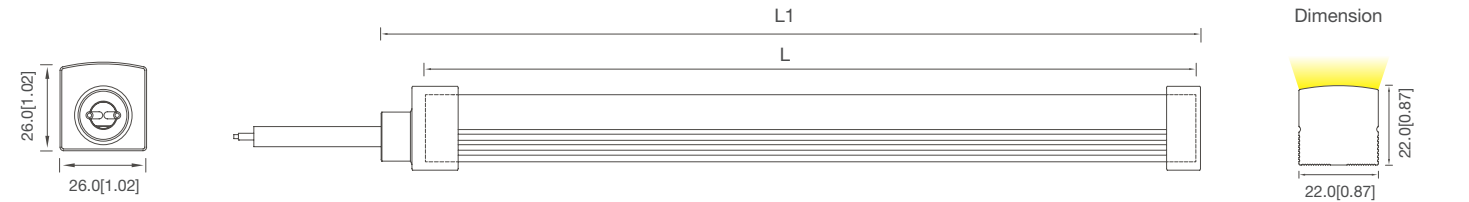
RECOMMENDED POWER SUPPLY UPON WORKING LENGTH

Model No.	Working Length (m)	Current (A)	Voltage (DC)	Measured Power (W)	Recommended Power Supply (W)	Power Supply Mode
UMF2222-WN/ UMF2222-PTW-WN	1	0.60	24V	14.4	20	Single Feed
	10	5.8		139.2	200	
UMF2222-RGB	1	0.64	24V	15.36	25	Single Feed
	15	8.7		208.8	300	
UMF2222_RGBW	1	0.82	24V	19.58	25	Single Feed
	10	7.4		177.6	240	

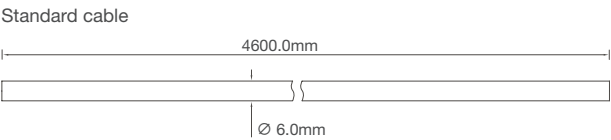
PROFILE DRAWINGS

Unit: mm[inch]

Glue Process (IP68)

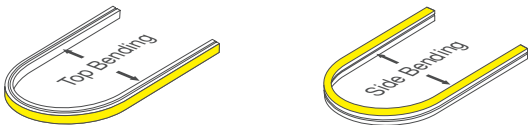


Model No.	L (mm / inch)	L1 (mm / inch)
UMF2222-WN	10000±5 / [393.7±0.20]	10012±5 / [394.17±0.20]
UMF2222-PTW-WN	10000±5 / [393.7±0.20]	10012±5 / [394.17±0.20]
UMF2222-RGB	15000±5 / [590.55±0.20]	15012±5 / [591.02±0.20]
UMF2222-RGBW	10000±5 / [393.7±0.20]	10012±5 / [394.17±0.20]

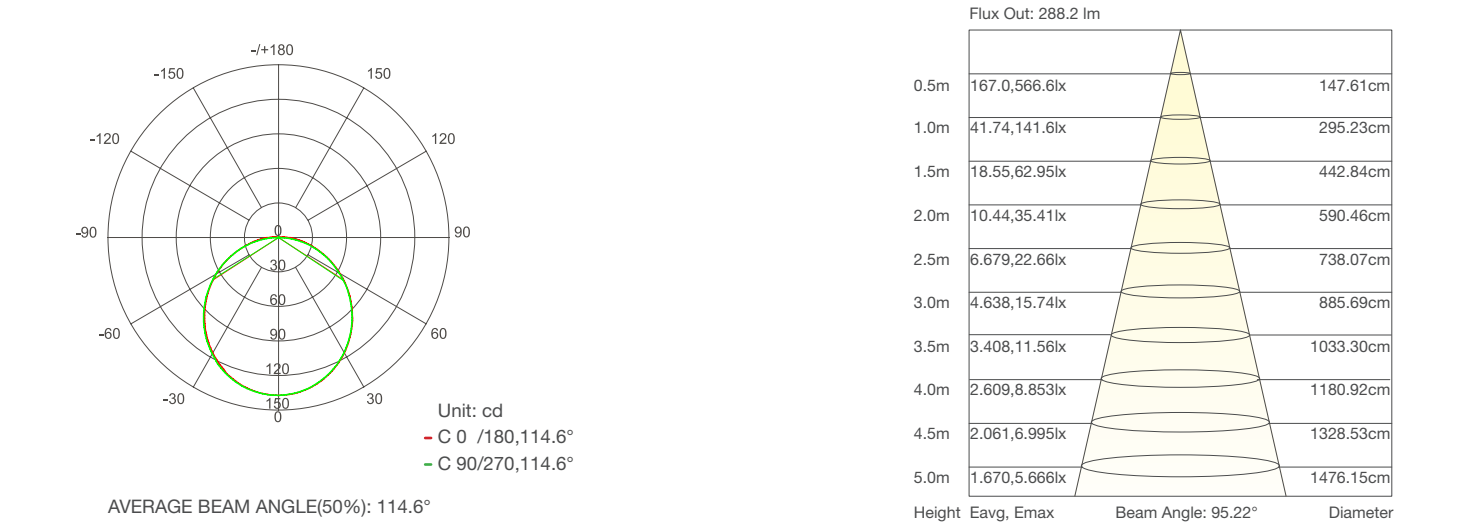


Note:
The cable length can be customized according to customer requirements.
The customized length must be greater than 4.6 meters

Bending Diameter



Note: Please refer to the "Other Parameters" table above for bending diameter.




Note: the above two figures are tested with the sample UMF2222-RGB, for other data, please consult sales rep.

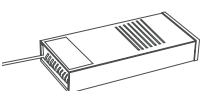
RELIABILITY TEST

□ Type: Different Water Environment Tests		□ Category: Blueview standard	□ Result: Pass
Test Item: Artificial Swimming Pool Test		Test Item: Artificial Seawater Test	
Standard: Simulated pool water, 25 °C (±2 °C), 3 m depth, weekly water-quality stability check, daily chlorine check; observe surface oxidation and corrosion resistance; 2000 hrs.		Standard: Simulated seawater, 25 °C (±2 °C), 3 m depth, weekly water-quality stability check, pH 7-8; observe surface oxidation and corrosion resistance; 2500 hrs.	


PRODUCTS AND TOOLS



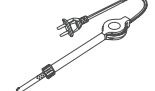
Cutter



LED power supply






Electric drill



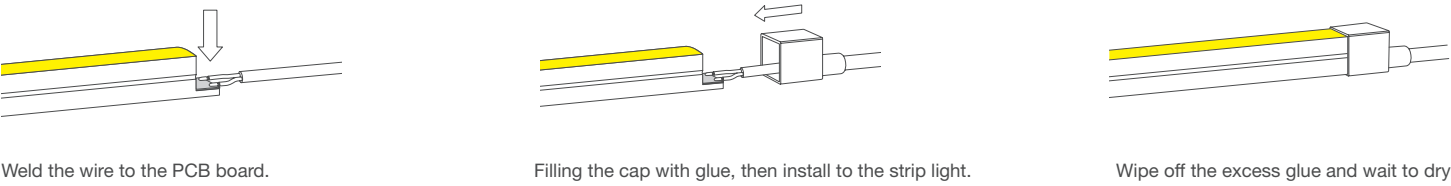
Electric iron

ACCESSORIES INFORMATION

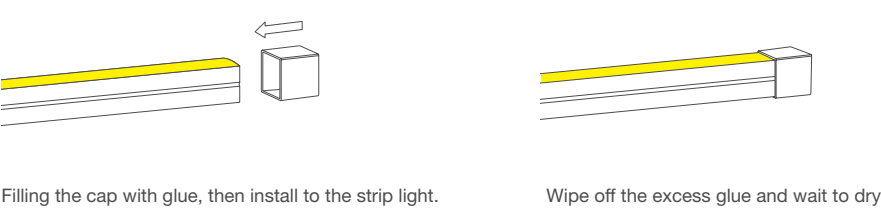
Picture	Item	Model No.	Part No.	Dimensions W*H*L (mm)	Quantity	Free/Optional
	Front cap (straight outlet)	--	01.06.10602002301	25*25*50	--	Free
	Closing-end cap	--	01.06.10602001957	25*25*22	--	Free
	Front cap (Side outlet)	--	01.06.10602002303	45*25*30	--	Optional

INSTALLATION

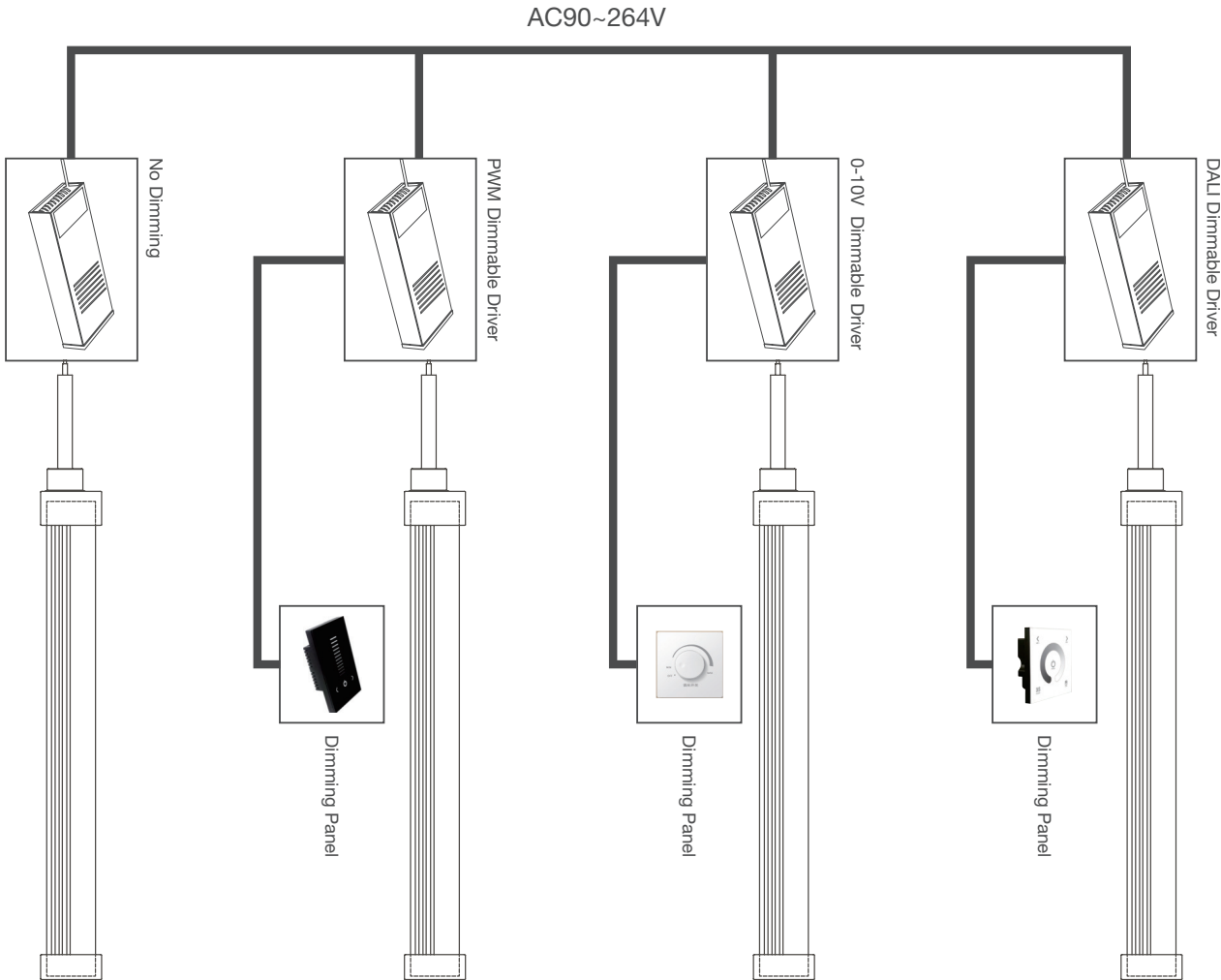
Front cap installation



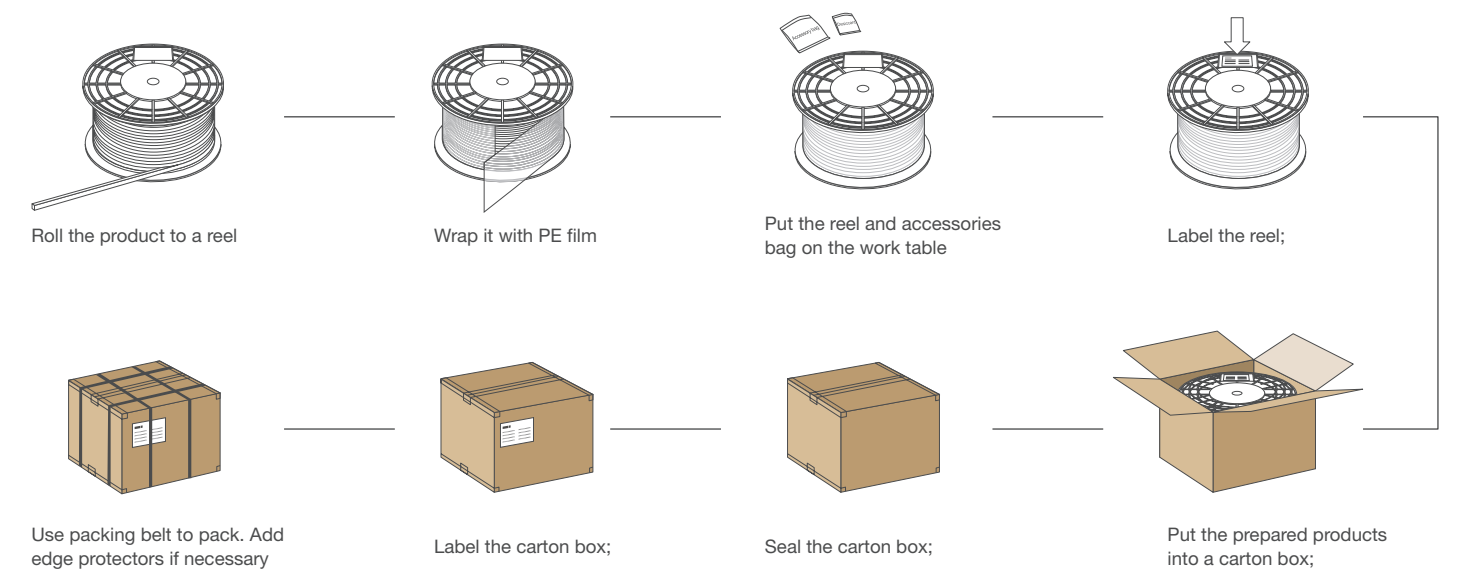
Closing-end cap installation



SUPPORTED DIMMING METHODS AND WIRING DIAGRAM



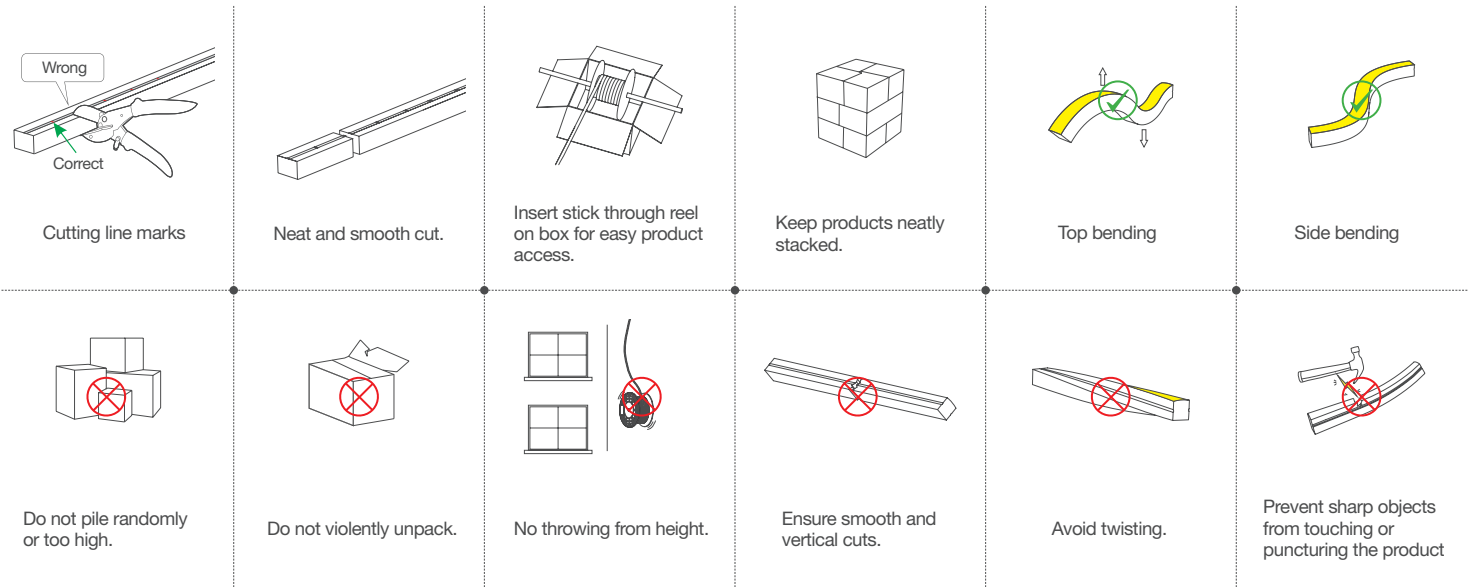
PACKAGING INFORMATION

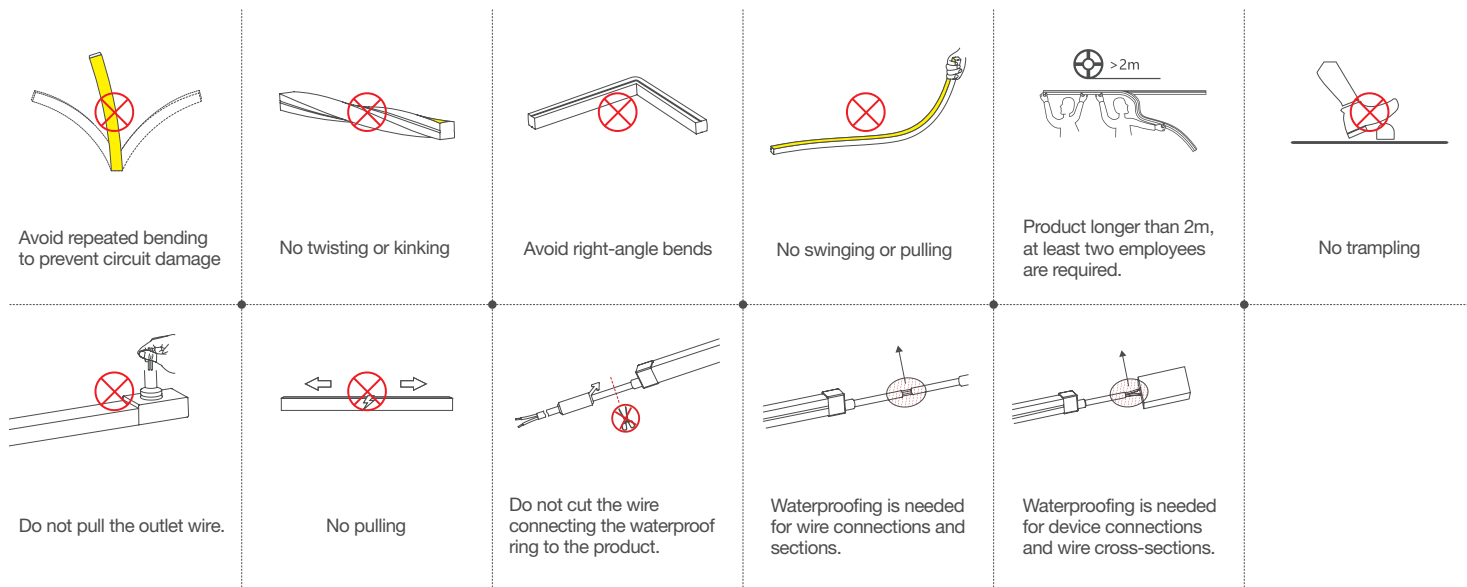


Model No.	Product Size L*W*H (mm)	Carton Size (mm)	Meter/Reel	Reel/Carton	Gross Weight (kg)
UMF2222-WN	10000*22*22	390*390*325	10	3	17.05(1±10%)
UMF2222-PTW-WN	10000*22*22	390*390*325	10	3	17.05(1±10%)
UMF2222-RGB	15000*22*22	375*375*325	15	1	12.24(1±10%)
UMF2222-RGBW	10000*22*22	390*390*325	10	3	17.05(1±10%)

- Notes:
- For other customized length packaging, please ask our sales rep.
 - The above-mentioned packaging quantity and weight are only for the illustrated packaging method. For other packaging methods, the packaging quantity and weight will be different. The actual weight is subject to the actual product.

WARNING MARK

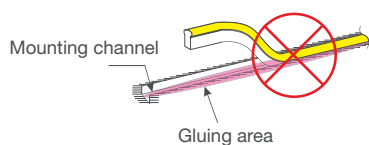




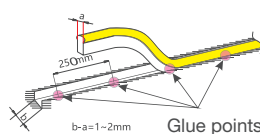
Note: ☐ There are cutting marks on the PCB; ☐ Please pay attention to above warnings during transportation and using;

ATTENTIONS BEFORE INSTALLATION

- Before installation, check that the product parameters are consistent with the requirements (Seeing product specifications or product labels)
- Load voltage, current, power and power supply should be matched with the product.
- Follow the instructions of wiring diagram (first connect the load and then the power supply) to avoid short circuit.
- Make sure the correct connection of positive and negative poles between products and power supply. Otherwise, the light will not be on.
- Make sure the power cord firmly screwed into the terminal and it should not be pulled out by hands.
- The terminal should have waterproof and anti-corrosive treatment.
- During installation, if components are used, please refer to the relevant parts description and installation methods in the corresponding specification sheet.
- Ensure that there are channels or clips on the installation carrier to provide fixation.
- For IP68 product, it is not recommended for customers to cut it themselves; for IP67 product, customers may cut it themselves and seal it with adhesive to achieve IP65 rating
- It is not recommended to rely solely on glue for fixing the product; gluing serves only as auxiliary fixation.
- Considering the thermal expansion and contraction of the product, sufficient space must be reserved. It is recommended to have a maximum of four glue points per meter of product.



If using glue for extra fixation, avoid filling the mounting channel entirely, as excessive glue may hinder the release of thermal expansion and contraction stress in the product.



Apply glue only as auxiliary fixation. If gluing is necessary, it is recommended to have a maximum of four glue points per meter of product; the amount of glue should be controlled appropriately to ensure secure fixation.

This product is not suitable for use in environments with strong acids, strong alkalis, diesel, gasoline, or engine oil.

WARNING

- Do not disassemble or retrofit the light. Do not touch the surface of the light with a sharp object.
- Do not do live-line working during installation, especially for high voltage product.
- Do not use any organic chemical solvents.
- Use neutral glass adhesive to fix this product and it needs to be dried 4 hours in the open environment after operation.
- Treat the ends and the circuit connection points that are not connected to the main line with insulation, waterproof, and anti-corrosion in the installation.
- Use 18AWG (0.75mm² cross-sectional area) or thicker core wire to avoid adverse consequences caused by overheating, if the power cable need to lengthen.
- Make sure the input voltage meets the requirements and lines are connected correctly before lighting on
- This product is for signage, and do not use as general lighting.
- Series connection within the max run.
- The length of the power cable between the power supply and the led strip should not exceed 2 meters. Otherwise, large circuit loss will lead to inconsistent brightness.
- Installation, maintenance and repair should be operated by a qualified technician.

STATEMENTS AND RECYCLING

Statements

- Repair should be operated by a qualified technician or supplier, if the external circuit or main line of this product is damaged.
- The parameters given in this manual are typical values and for reference only
- All illustrations and drawings in this manual are for reference.
- This product is subject to change without notice.

Recycling

- LED lighting products belongs to electronic products, please do recycling treatment according to the relevant WEEE directives.

Version	Content	Date
A1.2	Update: Product Features	2026-1-20

BLUEVIEW ELEC-OPTIC TECH CO.,LTD

- ☐ Tel: +86-28-8148 0011

☐ Fax: +86-28-8148 1258
- ☐ Web.: www.blueviewled.com

☐ Email: sales@blueviewled.com
- ☐ Add.: No. 1000, Section 2, Konggang 2nd Road, Shuangliu, Chengdu 610207, Sichuan, CHINA