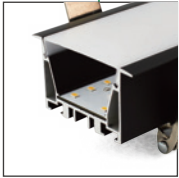
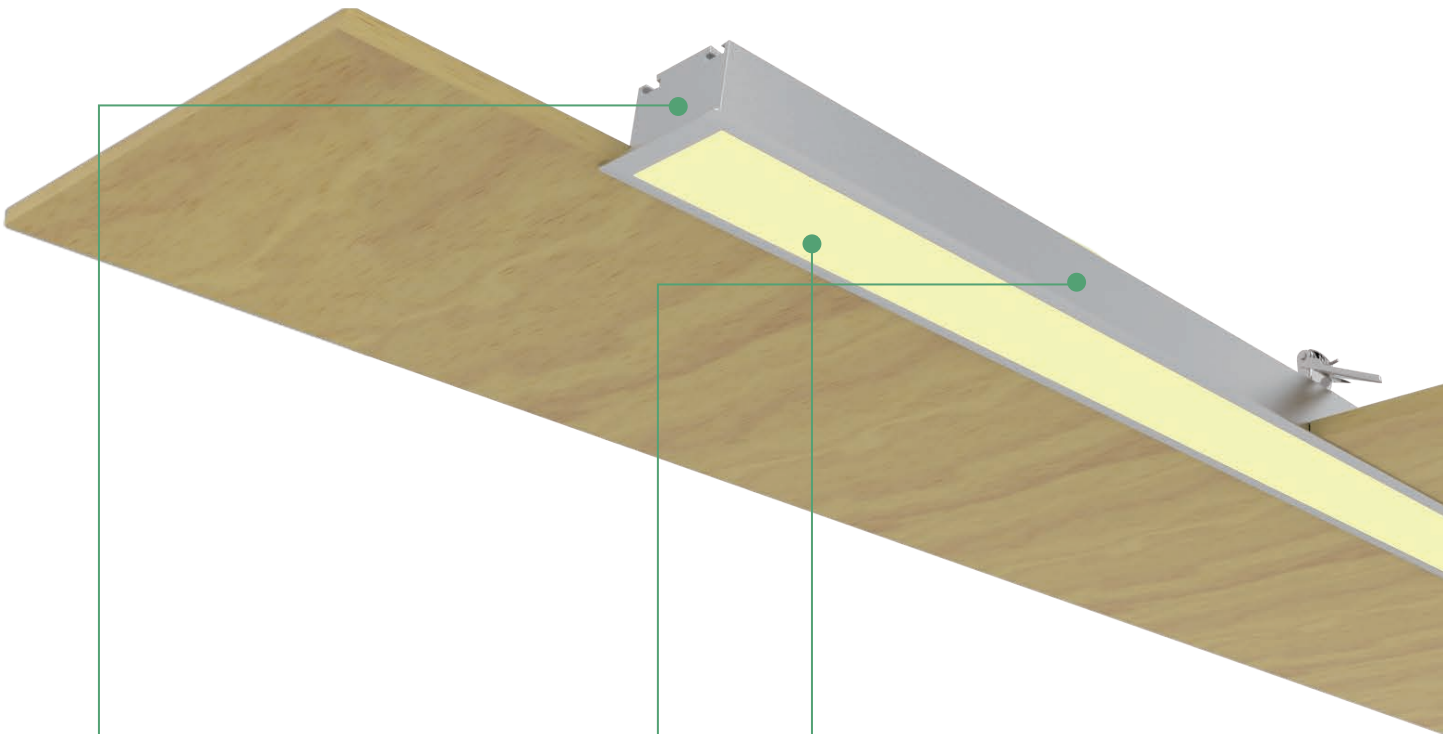
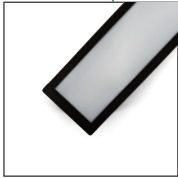


U653532R

RECESSED LINEAR LIGHT



Dual White light engine available
3-Step MacAdam



PC Diffuser



6063 Aluminum
Silver / Black clear matt anodize
White/Black matt powder coating
Customized RAL color available

U653532R

RECESSED LINEAR LIGHT

ORDERING INFORMATION

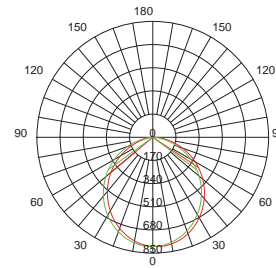
LUMINAIRE	FINISH	LENS	LENGTH	COLOR QUALITY ¹	COLOR TEMP ²	CRI	INSTALL ACCS.	IP GRADE	CONTROL OPTOINS
U653532	W White	D Diffuser	2 - 627mm	3 3-Step MacAdam Ellipse	27 - 2700K	80 80+ CRI	TR Trimed Recessed	22 IP22	D1 - DALI D2 - 0-10V D3 - On/off
	B Black		4 - 1227mm		30 - 3000K				
	S Silver		5 - 1527mm	5 5-Step MacAdam Ellips	35 - 3500K				
			8 - 2427mm		40 - 4000K				
					50 - 5000K	95 95+ CRI			
					60 - 6000K				
					65 - 6500K				

1. Blueview's standard is 3-Step MacAdam

2. The listed Color Temperature is only available in CRI80+ in Epistar Chips, for 95+, 90+ in Epistar and Sumsung chips, pls. check the list on following page. For more options, pls. check with your executive sales.

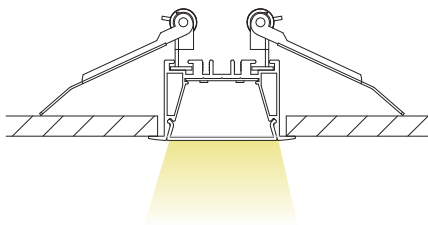
SPECIFICATIONS

Voltage	220V-240 VAC / 110-240VAC			
Width / Height	65mm x 35mm			
Length	627mm	1227mm	1527mm	2427mm
Power (W/m /ft)	15.6 W/pc	31.1 W/pc	37.8 W/pc	62 W/pc
Efficacy Up to	85lm/w	90lm/w	90lm/w	90lm/w
Control	Dali , 0-10V, on/off			



Down Lighting

INSTALLATION



Trim-Less Recessed

ACCESSORIES



Trim-Less Recessed Kit

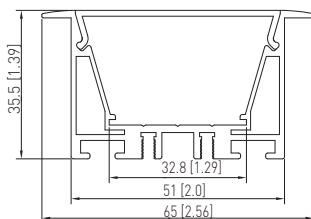
SPECIFICATIONS

	Color Temperature	Lumen / Length			
RA 80	2700K	1204lm / 0.6m	2400lm / 1.2m	2917lm / 1.5m	4784lm / 2.4m
	3000K	1267lm / 0.6m	2526lm / 1.2m	3070lm / 1.5m	5036lm / 2.4m
	3500K	1334lm / 0.6m	2659lm / 1.2m	3232lm / 1.5m	5301lm / 2.4m
	4000K	1404lm / 0.6m	2799lm / 1.2m	3402lm / 1.5m	5580lm / 2.4m
	5000K	1404lm / 0.6m	2799lm / 1.2m	3402lm / 1.5m	5580lm / 2.4m
	6000K	1404lm / 0.6m	2799lm / 1.2m	3402lm / 1.5m	5580lm / 2.4m
	6500K	1404lm / 0.6m	2799lm / 1.2m	3402lm / 1.5m	5580lm / 2.4m
RA 90	2700K	963lm / 0.6m	1920lm / 1.2m	2333lm / 1.5m	3827lm / 2.4m
	3000K	1014lm / 0.6m	2021lm / 1.2m	2456lm / 1.5m	4029lm / 2.4m
	3500K	1067lm / 0.6m	2127lm / 1.2m	2586lm / 1.5m	4241lm / 2.4m
	4000K	1123lm / 0.6m	2239lm / 1.2m	2722lm / 1.5m	4464lm / 2.4m
	5000K	1123lm / 0.6m	2239lm / 1.2m	2722lm / 1.5m	4464lm / 2.4m
	5500K	1123lm / 0.6m	2239lm / 1.2m	2722lm / 1.5m	4464lm / 2.4m
	6500K	1123lm / 0.6m	2239lm / 1.2m	2722lm / 1.5m	4464lm / 2.4m
RA 95	2700K	867lm / 0.6m	1728lm / 1.2m	2100lm / 1.5m	3445lm / 2.4m
	3000K	912lm / 0.6m	1819lm / 1.2m	2211lm / 1.5m	3626lm / 2.4m
	3500K	960lm / 0.6m	1915lm / 1.2m	2327lm / 1.5m	3817lm / 2.4m
	4000K	1010lm / 0.6m	2015lm / 1.2m	2449lm / 1.5m	4017lm / 2.4m
	6500K	1010lm / 0.6m	2015lm / 1.2m	2449lm / 1.5m	4017lm / 2.4m
SAMSUNG RA 80	3000K	1200lm / 0.6m	2393lm / 1.2m	2909lm / 1.5m	4771lm / 2.4m
	4000K	1263lm / 0.6m	2519lm / 1.2m	3061lm / 1.5m	5022lm / 2.4m
	6500K	1263lm / 0.6m	2519lm / 1.2m	3061lm / 1.5m	5022lm / 2.4m

Note:

- The given data are typical values in PC Diffuser. Due to tolerances of the production process and the electrical components, values for light output and electrical power can vary up to 10%.
- 15% less on luminous flux at Traic driver, DALI and 0/1-10V driver, and -10% Non-Dim driver.
- 10% less on UGR<19 version.
- Above data based on Non-Dimmable for all luminaires.
- More customized LED and CCT available.
- LM-80, IES TM-30-15 testing report available for led.

DIMENSIONS



Unit:mm[in]

LED CHIPS AND DRIVER OPTIONS

