

IP Grade Available //



Features //

Basic Features

- Reliable long life: LM80 tested in L80>60,000h
- Synchronized color change
- Cutttable every 3 LEDs for 12V, 6 LEDs for 24V
- 3M double sided tape for easy installation
- cULus Listed, 4 years warranty

Application

- Great for Cabinet Lighting
- Under-cabinet lighting, showcase lighting
- Cove lighting, task lighting, Bookshelf, cupboard lighting, etc.
- Can be used with the channel or light bars listed on the Accessories tab

BLUEVIEW ELEC-OPTIC TECH CO.,LTD

Tel: +86-28-8148 0011 Fax: +86-28-8148 1258
Mail: sales@blueviewled.com Web.: www.blueviewled.com
Add: No.1000, Section 2, 2nd Konggang Road, Southwest
Aviation Industrial Development Zone, Chengdu,Sichuan, China.
Zip code: 610207

Specifications are subject to change without notice.
©Blueview™ 2016 – All rights reserved. Made in China.

Specifications

| | | | |
|-----------------------|--|----------------------------|---|
| LED Type | SMD 5050 | Dimmable | Yes (compatible with BV311 RF dimmer & BV Dimmer) |
| LED Q'ty/m | 30pcs | IP grade | IP22 (IP65, IP67 & IP68 available upon request) |
| Input Voltage | 12V / 24VDC Constant Voltage | Installation | 3M™ double sided tape |
| Power | 7.2W | Working Temperature | -25~+60 °C |
| Cutting length | 12V: 30leds=100mm 3 LEDs 24V: 30leds=200mm 6 LEDs | Max run | 12V: 30leds=4m 24V: 30leds=8m |
| Strip Width | 10mm/12mm | Certification | E354137 cULus Listed, CE, RoHs |
| Viewing Angle | 120° | Warranty | 4 years/ 2 years [Ⓞ] |

| Order Code | Color | Wavelength (nm) | Illuminance (mcd/m ²) |
|--------------------|-------|-----------------|-----------------------------------|
| FN-5050A-30-12-RGB | RGB | R: 620-625 | R: 13500-18900 |
| FN-5050A-30-24-RGB | | G: 515-520 | G: 24300-40500 |
| | | B: 460-470 | B: 6750-13500 |

Note[Ⓞ]: Contact Blueview for exact warranty period and policy

Note[Ⓞ]: Lumen output are measured according to LM-79-80, with a tolerance of +/- 5%

Note[Ⓞ]: Standard package: 5M/Roll

Order Code

| Model | Quality level | LED Q'ty/M | Input voltage | CCT/Color |
|---|---------------------|------------|------------------------|------------|
| FN | 5050A | 30 | 12 | RGB |
| FN-IP22 FWS-IP65 FWT-IP67 FWE-IP68 | 5050-5 yrs warranty | | 12-12V DC 24-24V DC | |

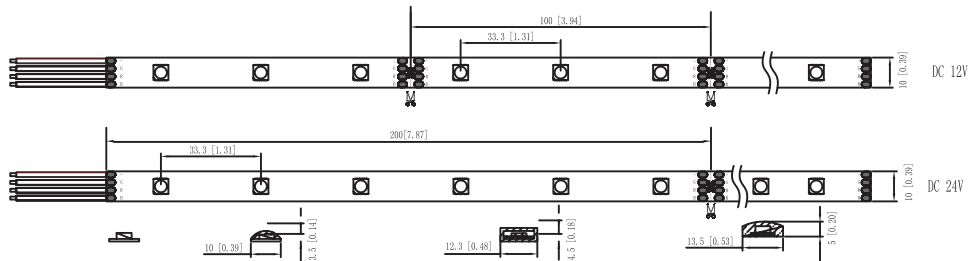
BLUEVIEW ELEC-OPTIC TECH CO.,LTD

Tel: +86-28-8148 0011 Fax: +86-28-8148 1258
 Mail: sales@blueviewled.com Web.: www.blueviewled.com
 Add: No.1000, Section 2, 2nd Konggang Road, Southwest
 Aviation Industrial Development Zone, Chengdu, Sichuan, China.
 Zip code: 610207

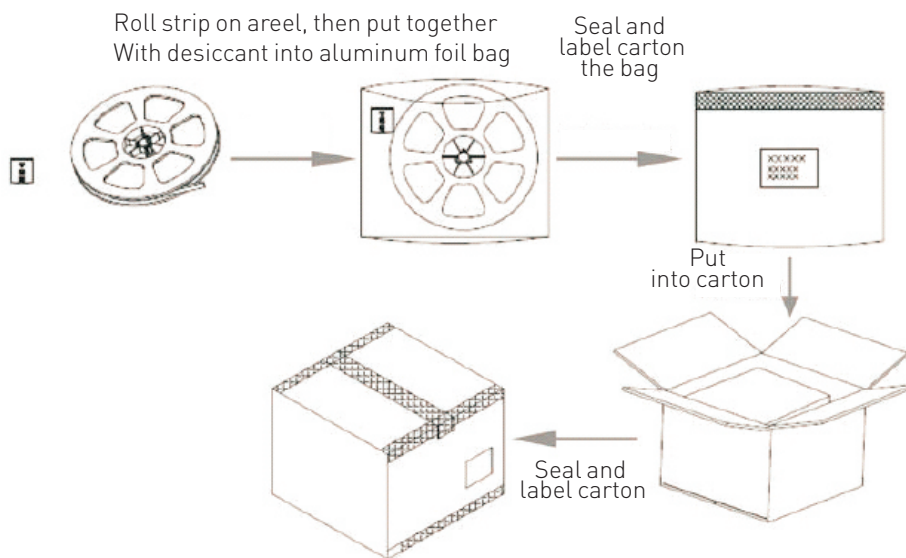
Specifications are subject to change without notice.
 ©Blueview™ 2016 – All rights reserved. Made in China.

Dimension

Unit:mm[in]



Package



Packing Info

| Order Code | Net Weight / CTN | Gross Weight / CTN | Units / CTN | Carton Size |
|-----------------|------------------|--------------------|-------------|---------------|
| FN-5050A-30-RGB | 19.68 (±10%)kgs | 21.38 kgs | 100 rolls | 550*400*340mm |

Remark: Data to change according to reality without prior notice.

BLUEVIEW ELEC-OPTIC TECH CO.,LTD

Tel: +86-28-8148 0011 Fax: +86-28-8148 1258
 Mail: sales@blueviewled.com Web.: www.blueviewled.com
 Add: No.1000, Section 2, 2nd Konggang Road, Southwest
 Aviation Industrial Development Zone, Chengdu,Sichuan, China.
 Zip code: 610207

Specifications are subject to change without notice.
 ©Blueview™ 2016 – All rights reserved. Made in China.