

Ra Available / IP Grade Available



Features

Basic Features

- 4 chips in one diode, red, green, blue and white
- Full RGBW color mixing
- Synchronized color change
- Cutttable every 3leds for 12V, 6 LEDs for 24V
- 3M double sided tape for easy installation
- cULus Listed, 4 years warranty
- Silicone coated IP65; Tube protect IP67;
- Silicone Extrusion IP68 options

Wiring & connections

- 5 core cable
- 5 core quick connector

Application

- Great for Cabinet Lighting
- Under-cabinet lighting, showcase lighting
- Cove lighting, task lighting, Bookshelf, cupboard lighting, etc.
- Mount: 3M (branded) adhesive backing tape
- Can be used with the channel or light bars listed on the Accessories tab.



BLUEVIEW ELEC-OPTIC TECH CO.,LTD

Tel: +86-28-8148 0011 Fax: +86-28-8148 1258
 Mail: sales@blueviewled.com Web.: www.blueviewled.com
 Add: No.1000, Section 2, 2nd Konggang Road, Southwest
 Aviation Industrial Development Zone, Chengdu,Sichuan, China.
 Zip code: 610207

Specifications are subject to change without notice.
 ©Blueview™ 2016 – All rights reserved. Made in China.

Specifications

| | | | |
|-----------------------|-------------------------------------|----------------------------|---|
| LED Type | 5050RGBW 4in1 | Dimmable | Yes (compatible with BV311 RF dimmer & BV Dimmer) |
| LED Q'ty/m | 60pcs | IP grade | IP22 (IP65, IP67 & IP68 available upon request) |
| Input Voltage | 12V / 24VDC Constant Voltage | Installation | 3M™ double sided tape |
| Power | 19.2W | Working Temperature | -25+60°C |
| Cutting length | 12V: 50mm 3LEDs 24V: 100mm 6LEDs | Max run | 12V: 3 meters 24V: 5 meters |
| Strip Width | 14mm | Certification | E354137 cULus Listed, CE, RoHs |
| Viewing Angle | 120° | Warranty | 4 years |

| Order Code | CCT/ Color | CRI | Lumen/M [®] |
|--|---|-----|----------------------|
| FN-5050A-60-12V ¹ -RGBW (4IN1) |  2700K | 70+ | 450 |
| |  3343±122K | 80+ | 450 |
| |  4000K | 70+ | 480 |
| |  6000K | 70+ | 510 |
| |  RGB | - | - |

Note[®]: For 24VDC version, change order code from 12 to 24. e.g FN-5050A-60-24V-RGBW

Note[®]: Lumen output are measured according to LM-79-08, with a tolerance of +/- 5%

Note[®]: Standard package: 5M/Roll

Order Code

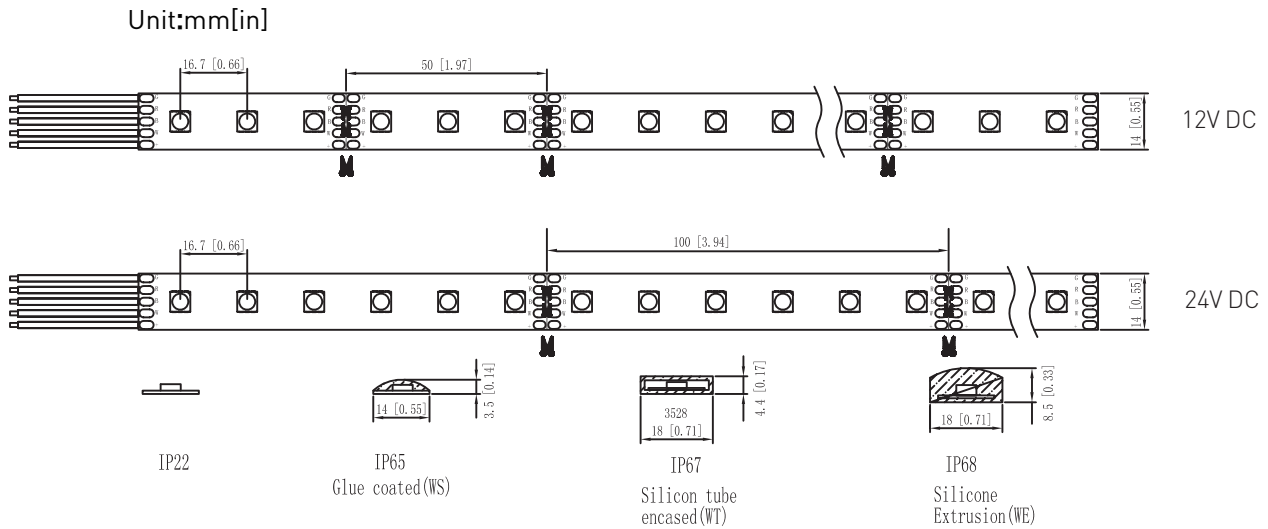
| Model | Quality level | LED Q'ty/M | Input voltage | RGBW |
|----------------|---------------------|------------|---------------|------------------------------|
| FN-IP20 | 5050A-RGBW | 60 | 12 | 27K |
| FWS-IP65 | 5050A-4yrs warranty | | 12-12V DC | view table above for options |
| FWT-IP67 | 5050A-2yrs warranty | | 24-24V DC | |
| WE-IP68 | | | | |

BLUEVIEW ELEC-OPTIC TECH CO.,LTD

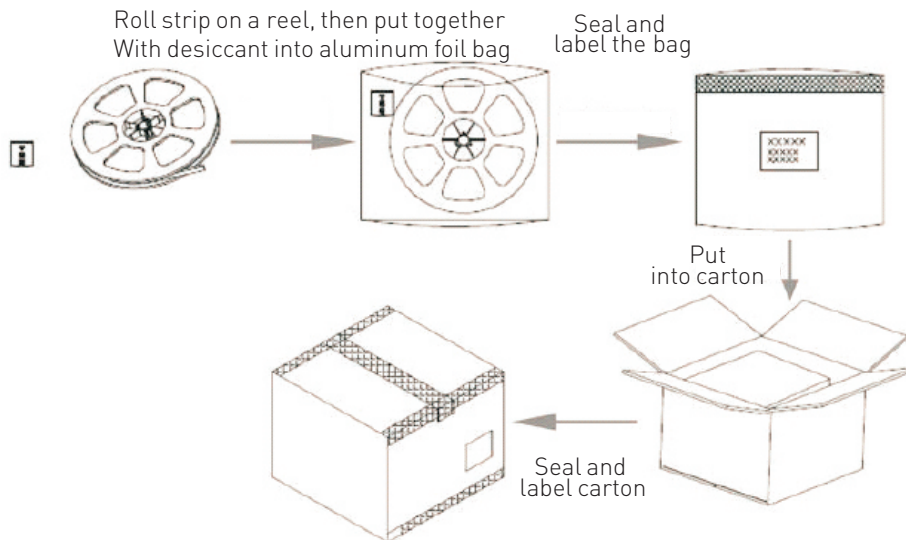
Tel: +86-28-8148 0011 Fax: +86-28-8148 1258
 Mail: sales@blueviewled.com Web.: www.blueviewled.com
 Add: No.1000, Section 2, 2nd Konggang Road, Southwest
 Aviation Industrial Development Zone, Chengdu, Sichuan, China.
 Zip code: 610207

Specifications are subject to change without notice.
 ©Blueview™ 2016 – All rights reserved. Made in China.

Dimension



Package



Packing Info

| Order Code | Net Weight / CTN | Gross Weight / CTN | Units / CTN | Carton Size |
|------------|------------------|--------------------|-------------|---------------|
| FN-IP20 | 20.0(±10%) kgs | 22.7 kgs | 100 rolls | 550*400*340mm |
| FWS-IP65 | 28.0 (±10%)kgs | 29.7 kgs | 80 rolls | 550*400*340mm |
| FWT-IP67 | 25.0 (±10%)kgs | 26.7 kgs | 80 rolls | 550*400*340mm |
| WE-IP68 | 41.6(±10%)kgs | 43.3 kgs | 80 rolls | 550*400*340mm |

Remark: Data to change according to reality without prior notice.

BLUEVIEW ELEC-OPTIC TECH CO.,LTD

Tel: +86-28-8148 0011 Fax: +86-28-8148 1258
 Mail: sales@blueviewled.com Web.: www.blueviewled.com
 Add: No.1000, Section 2, 2nd Konggang Road, Southwest
 Aviation Industrial Development Zone, Chengdu,Sichuan, China.
 Zip code: 610207

Specifications are subject to change without notice.
 ©Blueview™ 2016 – All rights reserved. Made in China.