



ChipBrand



One BIN only  
for a CCT range



Lifetime



Certified



Certified



Warranty



Certified



### Ra Available

### IP Grade Available



### Features

- 130LM/M Light Efficacy
- Constant Voltage 24VDC system
- Silicone coated-IP65, indoor-IP22 available
- Epistar chips, LM80 tested
- Ra90+/80+
- CE and RoHS certified
- 5 years warranty



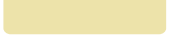
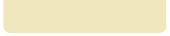



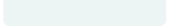
#### BLUEVIEW ELEC-OPTIC TECH CO.,LTD

Tel: +86-28-8148 0011      Fax: +86-28-8148 1258  
 Mail: sales@blueviewled.com      Web.: www.blueviewled.com  
 Add: No.1000, Section 2, 2nd Konggang Road, Southwest  
 Aviation Industrial Development Zone, Chengdu, Sichuan, China.  
 Zip code: 610207

Specifications are subject to change without notice.  
 © Blueview™ 2016 – All rights reserved. Made in China.

### Specifications

<b>LED Type</b>	SMD 2835	<b>Dimmable</b>	Yes (compatible with BV311 RF dimmer & BV Dimmer)
<b>LED Q'ty/m</b>	416pcs	<b>IP grade</b>	IP22 (IP65, available upon request)
<b>Input Voltage</b>	24VDC Constant Voltage	<b>Installation</b>	Heat-conductive adhesive tape (Heat sink is necessary)
<b>Power</b>	37.44W/m	<b>Working Temperature</b>	-25~+60 °C
<b>Cutting length</b>	38.5mm, 16 LEDs	<b>Max run</b>	6.5 meters(Single Feed)
<b>Strip Width</b>	50mm	<b>Certification</b>	CE,RoHs
<b>Viewing Angle</b>	120°	<b>Warranty</b>	5 years

Order Code	CCT/ Color	CRI	Lumen/M <sup>②</sup>
FN- H2835A-416-24-27K	 2645-2805K	90+, 80+	5408~5990
FN- H2835A-416-24-29K	 2855-3025k	90+, 80+	
FN- H2835A-416-24-34K	 3265-3535K	90+, 80+	
FN- H2835A-416-24-42K	 3897-4223K	90+, 80+	
FN- H2835A-416-24-51K	 4900-5300K	90+, 80+	
FN- H2835A-416-24-57K	 5477-6020K	90+, 80+	
FN- H2835A-416-24-63K	 6020-6530K	90+, 80+	
FN- H2835A-416-24-65K	 6175-6825K	90+, 80+	

Note<sup>①</sup>: Contact Blueview for exact warranty period and policy

Note<sup>②</sup>: Lumen output are based on CRI80+ measured according to PMS-80, with a tolerance of +/- 5%

Note<sup>③</sup>: Standard package: 5m/roll

### Order Code

Model	Quality level	LED Q'ty/M	Input voltage	CCT/Color
<b>FN</b>	<b>H2835</b>	<b>416</b>	<b>24</b>	<b>27K</b>
FN-IP22 FWS-IP65	H2835-5yrs warranty		24V DC	view table above for options

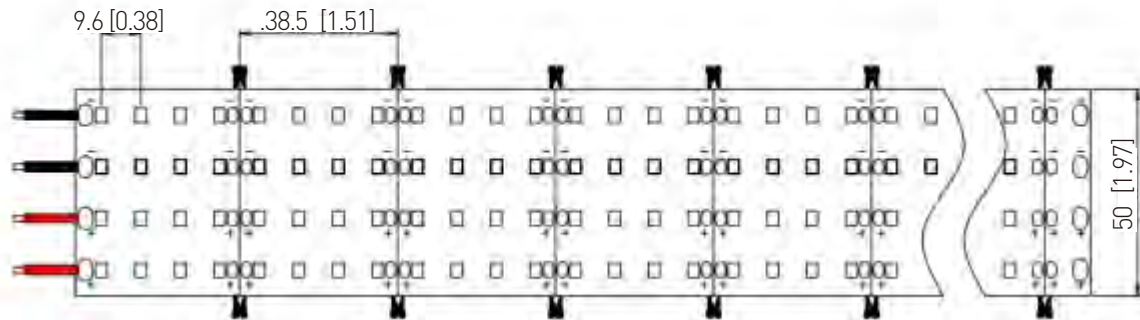
### BLUEVIEW ELEC-OPTIC TECH CO.,LTD

Tel: +86-28-8148 0011      Fax: +86-28-8148 1258  
 Mail: sales@blueviewled.com      Web.: www.blueviewled.com  
 Add: No.1000, Section 2, 2nd Konggang Road, Southwest  
 Aviation Industrial Development Zone, Chengdu,Sichuan, China.  
 Zip code: 610207

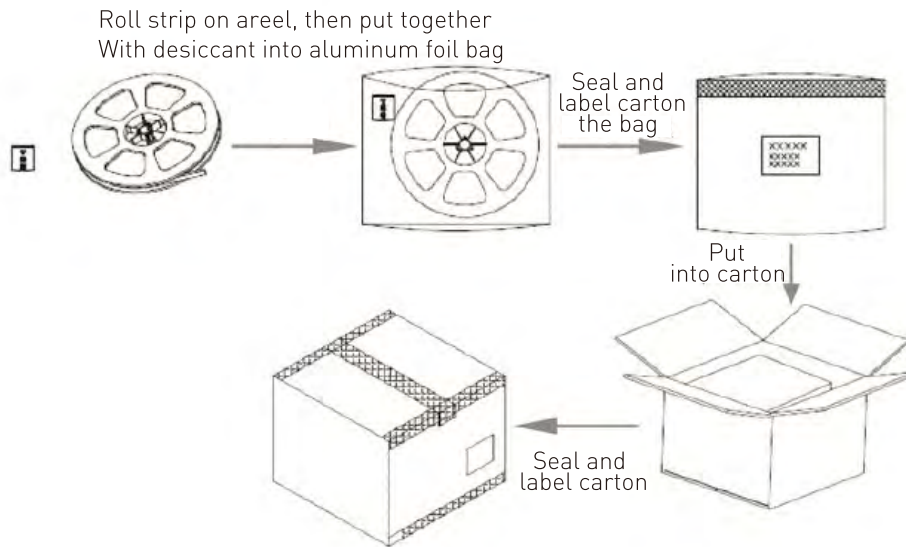
Specifications are subject to change without notice.  
 ©Blueview™ 2016 – All rights reserved. Made in China.

### Dimension

Unit:mm[in]



### Package



#### Packing Info

Order Code	Net Weight / CTN	Gross Weight / CTN	Units / CTN	Carton Size
FN-H2835-416-24	13.63(1±10%) kgs	14.90 (1±10%) kgs	25 rolls	550*400*340mm
FWS-H2835-416-24	27.50(1±10%) kgs	28.80 (1±10%) kgs	25 rolls	550*400*340mm

#### BLUEVIEW ELEC-OPTIC TECH CO.,LTD

Tel: +86-28-8148 0011      Fax: +86-28-8148 1258  
 Mail: sales@blueviewled.com      Web.: www.blueviewled.com  
 Add: No.1000, Section 2, 2nd Konggang Road, Southwest  
 Aviation Industrial Development Zone, Chengdu,Sichuan, China.  
 Zip code: 610207

Specifications are subject to change without notice.  
 ©Blueview™ 2016 – All rights reserved. Made in China.