

Features

- Full colored LED.
- Single signage cuttable. Easy installation.
- Full color changeable with controller.
- 50 series connection head-end less bright difference.
- Anti-stretch, new design.

Application

Outdoor channel letters.
Outdoor decoration.

BLUEVIEW ELEC-OPTIC TECH CO.,LTD

Tel: +86-28-8148 0011 Fax: +86-28-8148 1258
Mail: sales@blueviewled.com Web.: www.blueviewled.com
Add: No.1000, Section 2, 2nd Konggang Road, Southwest
Aviation Industrial Development Zone, Chengdu, Sichuan, China.
Zip code: 610207

Specifications are subject to change without notice.
© Blueview™ 2016 – All rights reserved. Made in China.

Specifications

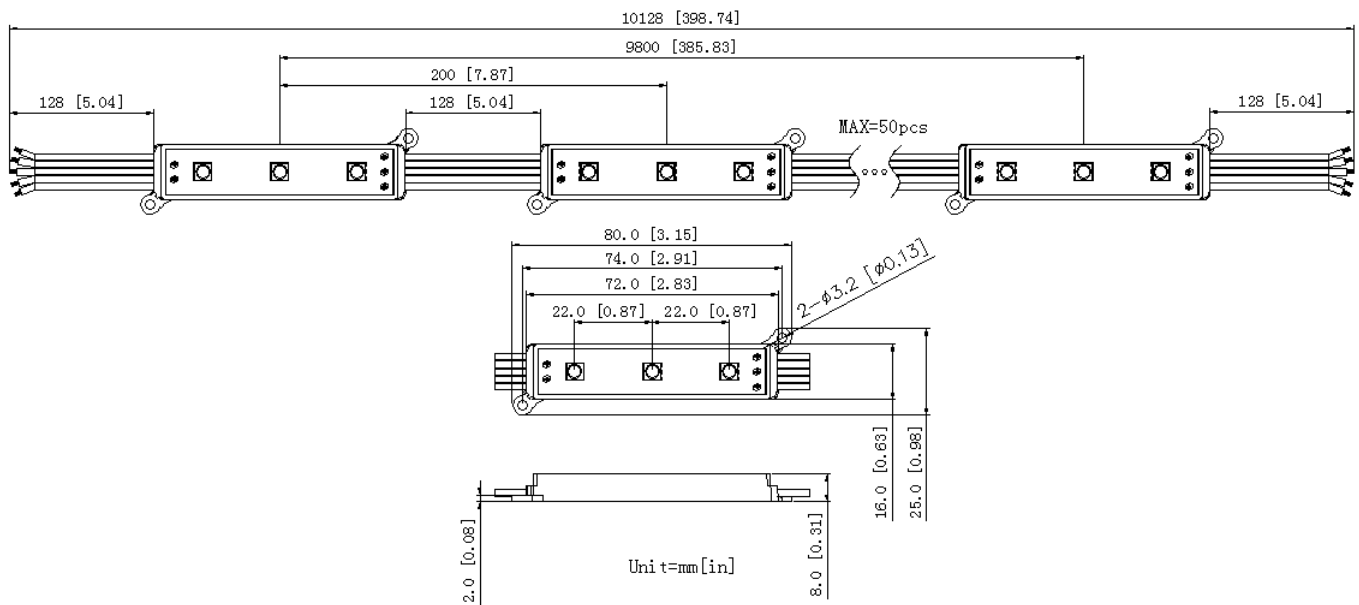
Part No.	BV-PZ5(1 module)
Color	RGBW
Wave Length	W=2700K/3200K/4000K/6000-7000k R=620~630,G=515~530,B=460~475
Angle	120°
RA	-
Lumen	36.46LM
Power	12V DC
Rated Power	0.91W
Operational Temperature	-25~+60℃
Storage Temperature	-25~+70℃
Dimension	L= 80mm W=25mm H=8mm

Note:

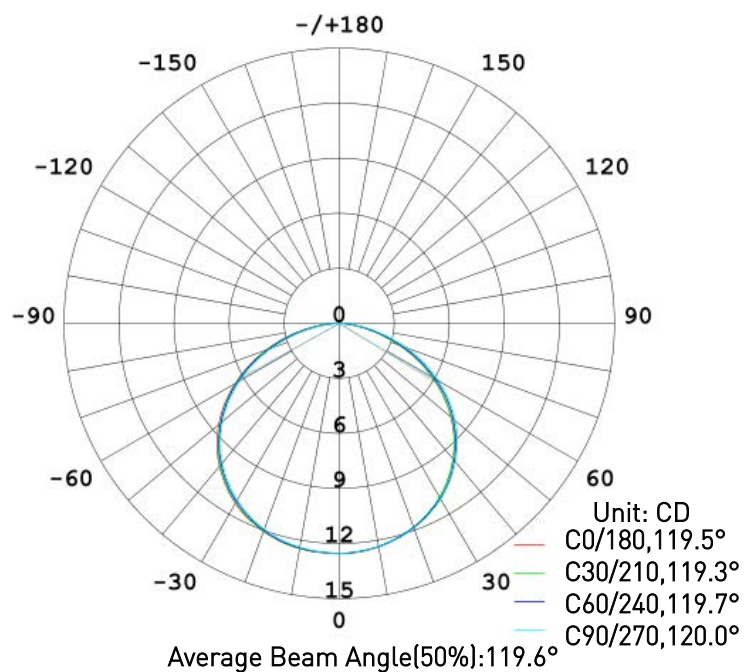
1. Tested temperature is 25±2℃
2. Figures above are typical figures. Actual figures could be different with typical figures.
3. With different input, the CCT could be different. And so could be Lumen.

Dimension

Unit:mm[in]



Luminous Intensity Distribution Diagram



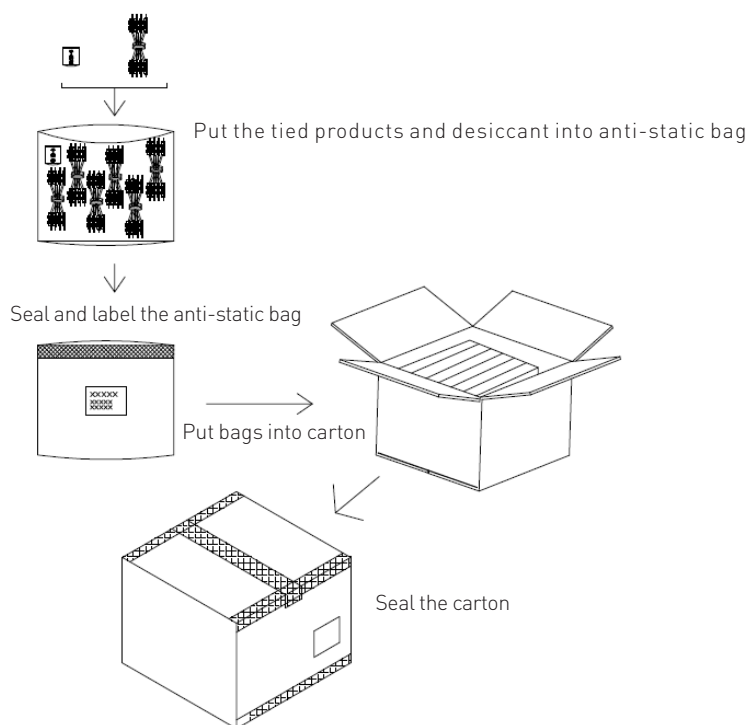
BLUEVIEW ELEC-OPTIC TECH CO.,LTD

Tel: +86-28-8148 0011 Fax: +86-28-8148 1258
Mail: sales@blueviewled.com Web.: www.blueviewled.com
Add: No.1000, Section 2, 2nd Konggang Road, Southwest
Aviation Industrial Development Zone, Chengdu, Sichuan, China.
Zip code: 610207

Specifications are subject to change without notice.

©Blueview™ 2016 – All rights reserved. Made in China.

Package



Product NO. (mm)	Carton Size (mm)	Total Amount (pcs/ctn)	Net Weight (kg)	Gross Weight (kg)
BV-PZ5	500*400*340	1250	23.75(1±10%)	25.25(1±10%)

Notes:

1. Packaging material: Anti-static bag, and carton.
2. Carton size: 550*400*340mm
3. Max series connection quantity is 50pcs/string, 1 strings/bag, 25 bags/carton
4. Above is standard packaging as per the sketch map, subject to actual order packaging

BLUEVIEW ELEC-OPTIC TECH CO.,LTD

Tel: +86-28-8148 0011 Fax: +86-28-8148 1258
 Mail: sales@blueviewled.com Web.: www.blueviewled.com
 Add: No.1000, Section 2, 2nd Konggang Road, Southwest
 Aviation Industrial Development Zone, Chengdu, Sichuan, China.
 Zip code: 610207

Specifications are subject to change without notice.
 ©Blueview™ 2016 – All rights reserved. Made in China.