

SMART BODY SENSOR

BV-SHT30



FUNCTION

- Adopt safety and environmental protection material;
- Mobile app control and check data;
- Real time report of light, temperature and humidity;
- Radar scanning induction;
- Bluetooth connection;

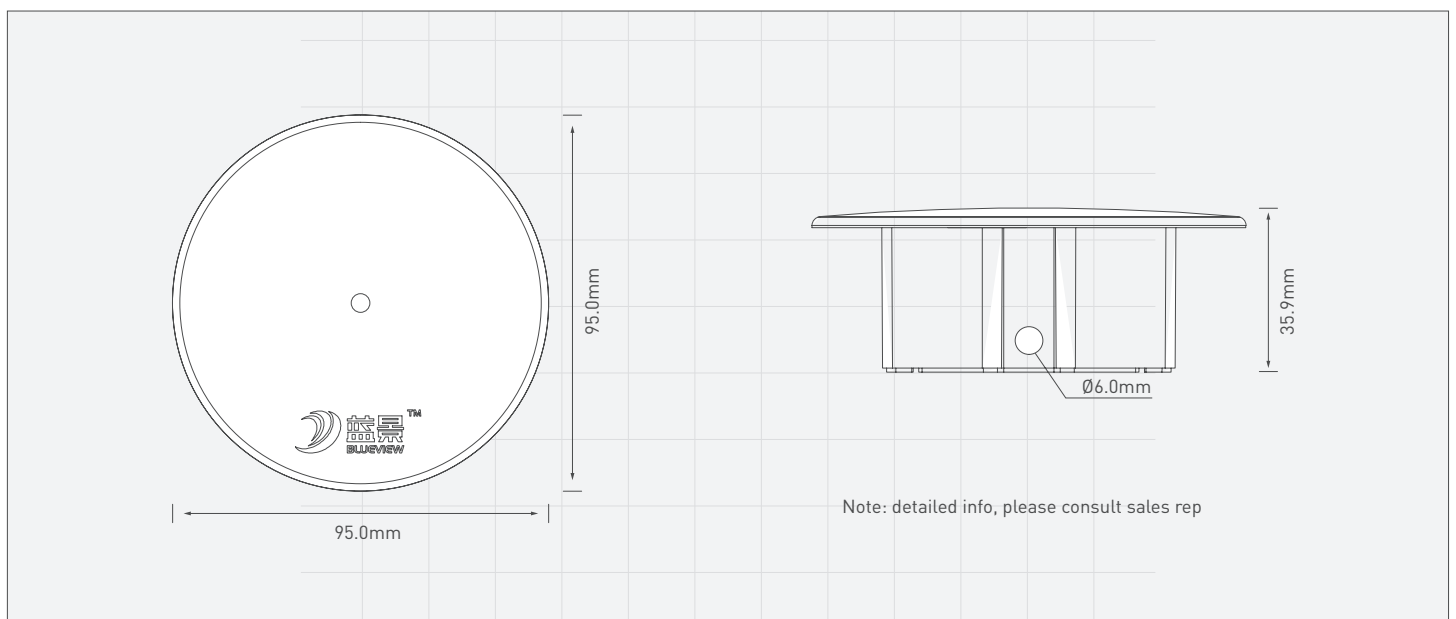
APPLICATION

Application: suitable for indoor and stairs human body induction control, etc.

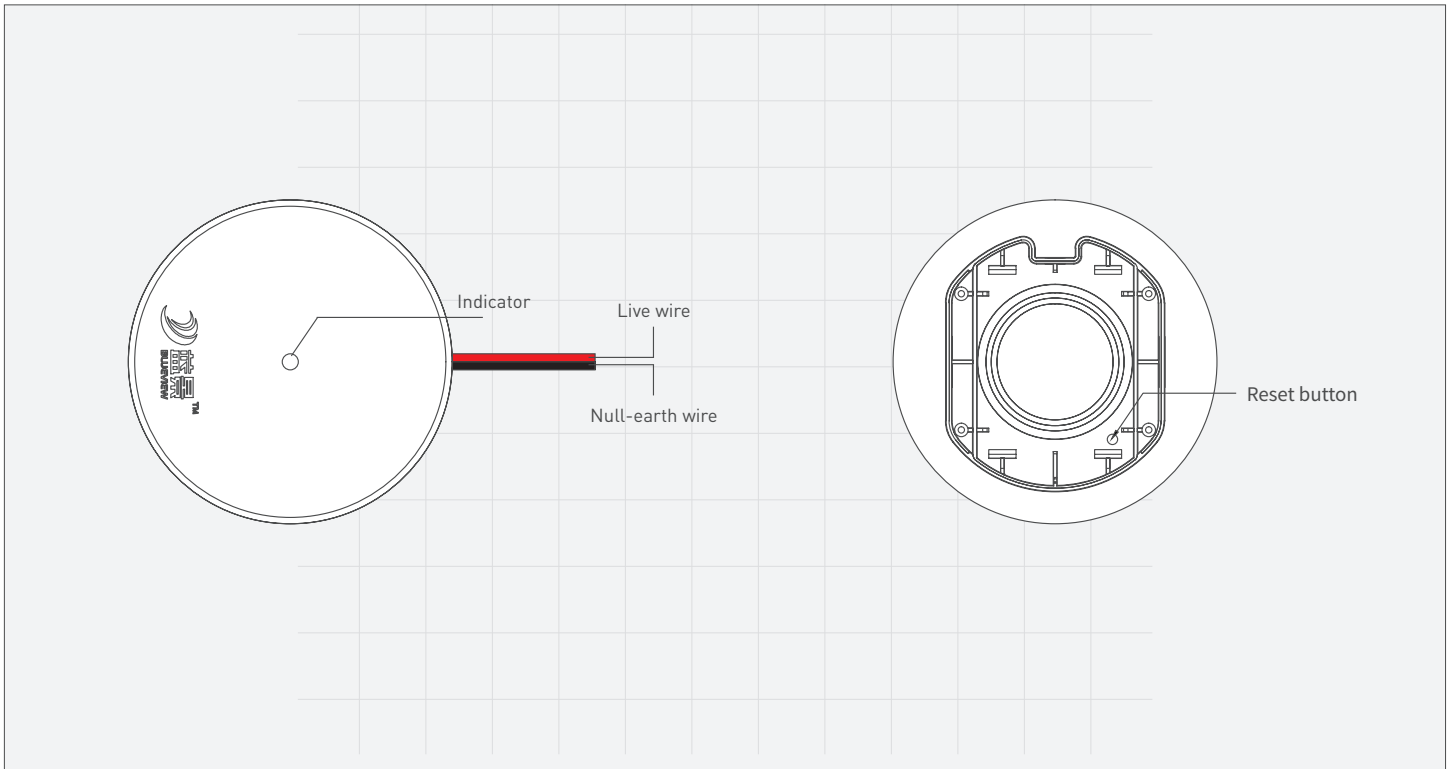
INSTALLATION

Fixed by screw

PROFILE DRAWING

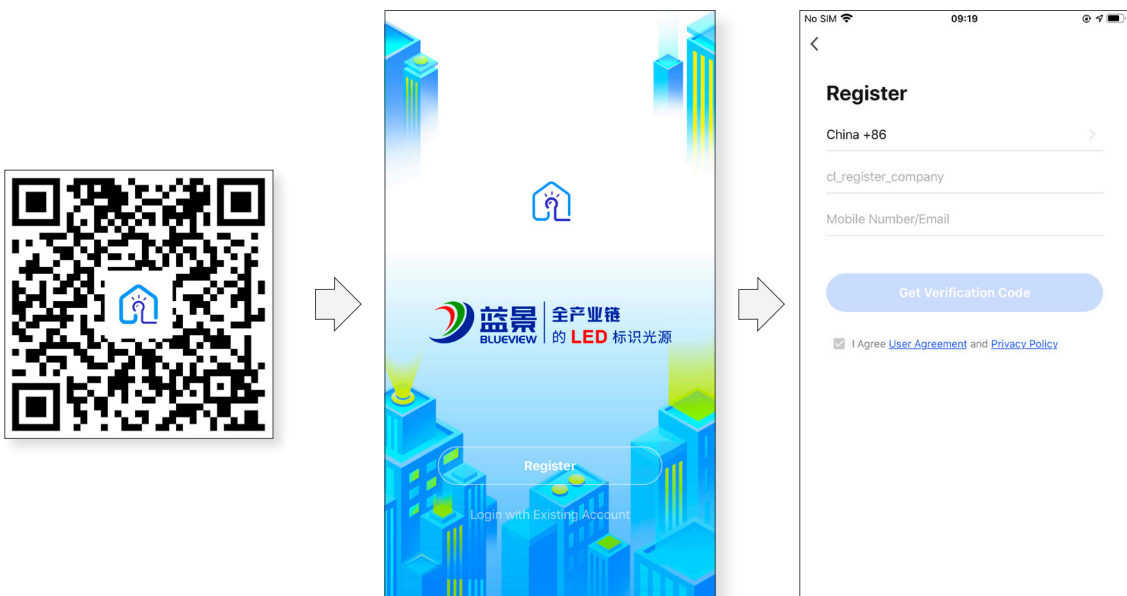


CONNECTION DIAGRAM

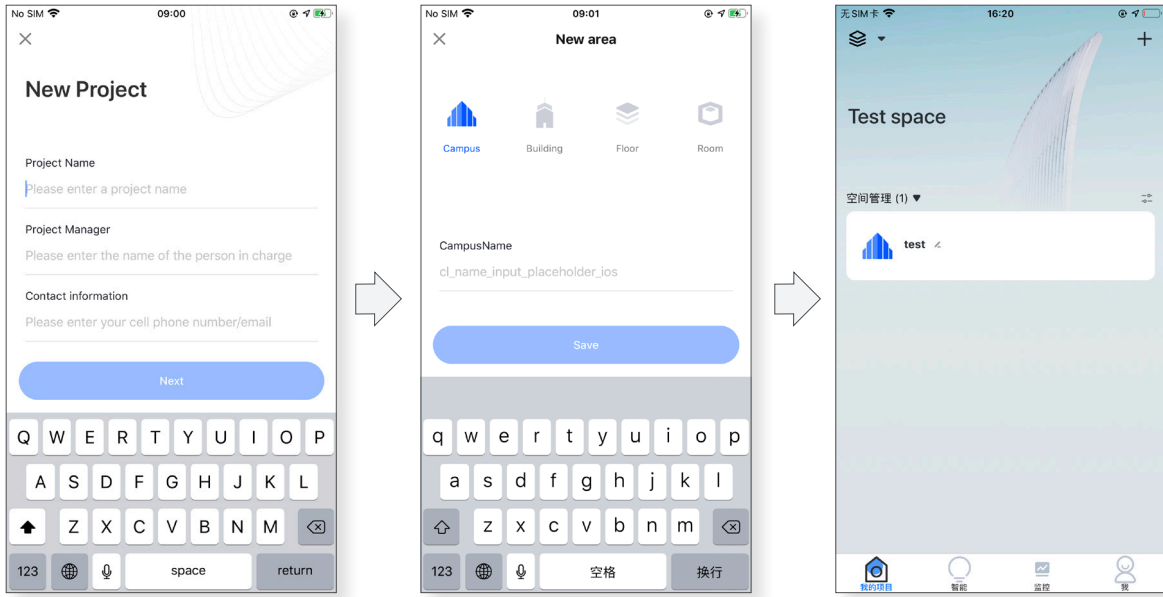


NETWORK ACCESS SETTINGS

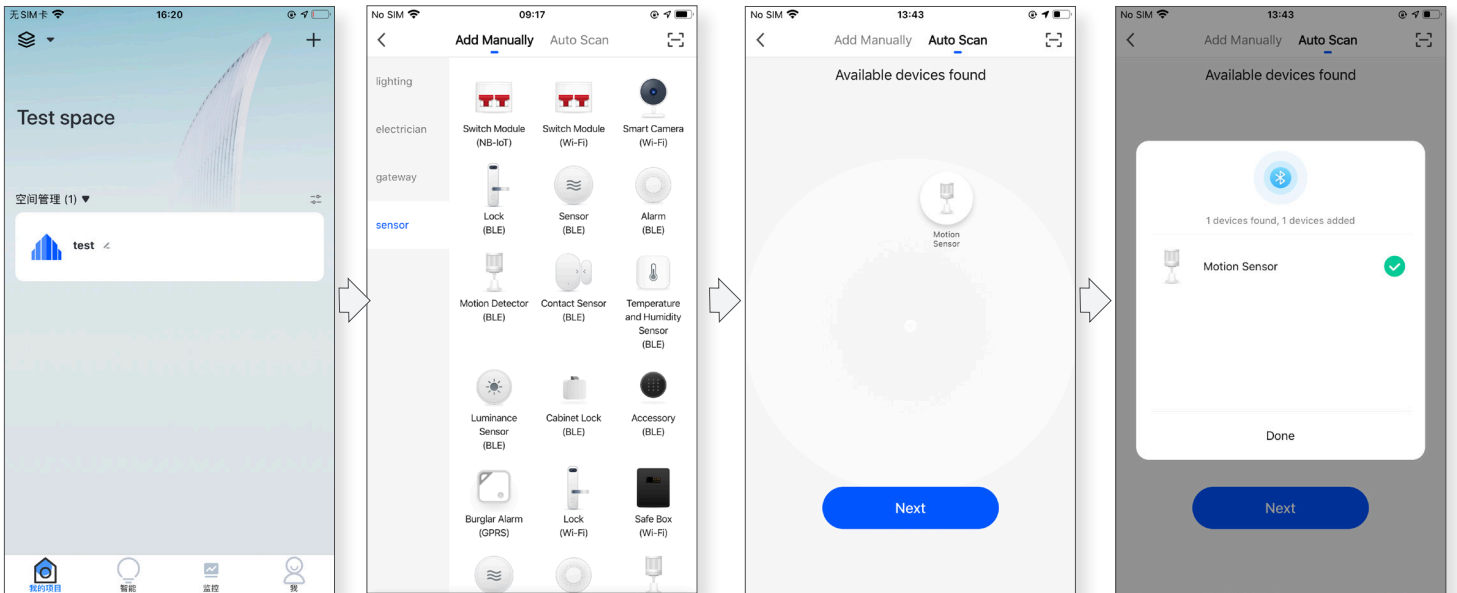
■ Scan to download APP, create new account



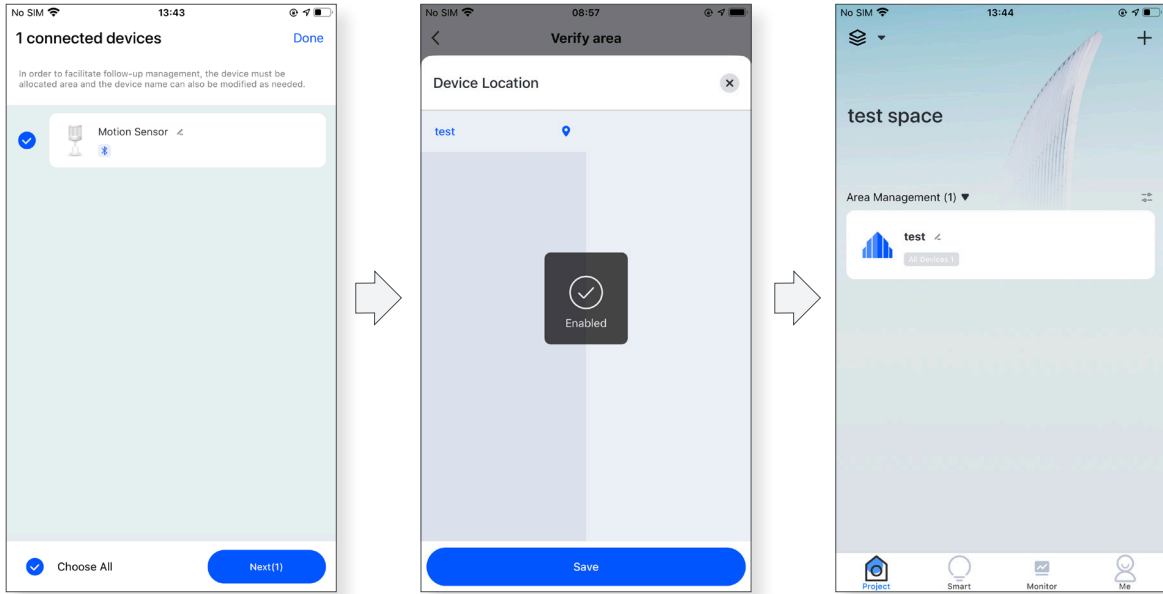
■ Create project



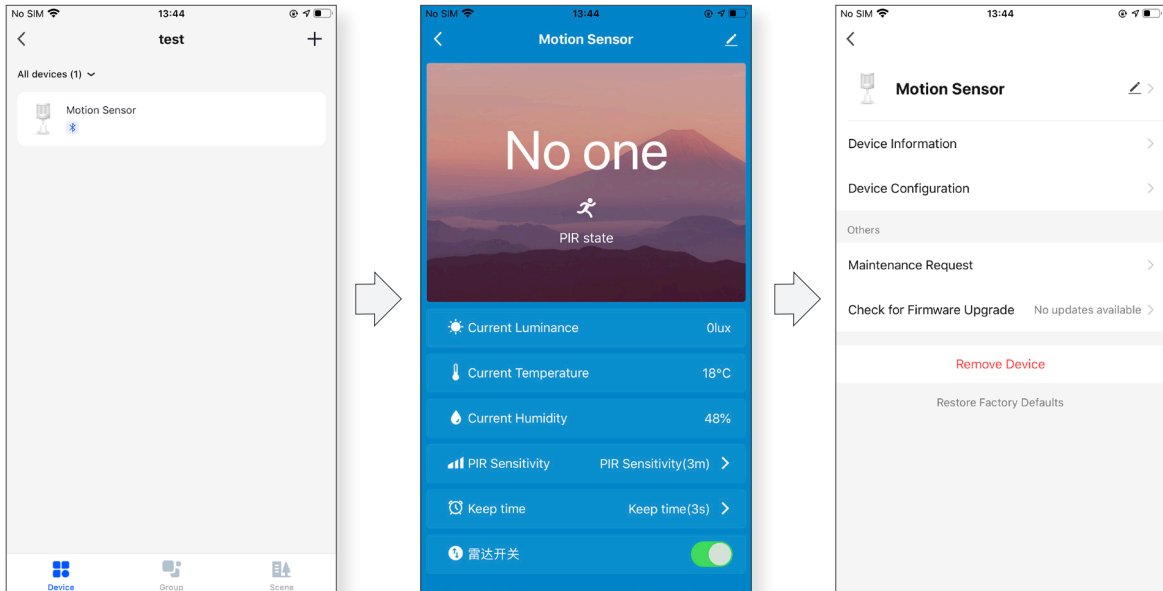
■ Add device



Device regional management



Function introduce



Illuminance, temperature and humidity detection; sensitivity and time setting

Checking device information and removing devices

MOUNTING PRECAUTIONS

- Before installing the product, please cut off the power supply to prevent electric shock; This product is limited to indoor use. Pay attention to waterproof protection.
- Please use it within the specified voltage range to avoid burning out the power supply.
- The product shall not be used in places with high temperature, high humidity and high corrosion, so as not to affect the service life of the product; The product should not be installed in a metal shielded place to avoid affecting the Bluetooth signal.
- If the mobile app cannot be connected to the power supply during the initial use of the client, please press and hold the reset button on the power supply; Press and hold the reset button on the power supply for 5 seconds to restore the factory setting. installed in a metal shielded place to avoid affecting the Bluetooth signal.
- If the mobile app cannot be connected to the power supply during the initial use of the client, please press and hold the reset button on the power supply; Press and hold the reset button on the power supply for 5 seconds to restore the factory setting.

WARRANTY ORDINANCE

In case of product performance failure caused by non-human damage during the warranty period, you can ask for the following normal after-sales services:

- Within 7 days of purchase, if there is a product quality problem, consumers can choose to install the invoice price for one-time return or exchange or replace the product with the same model and specification
- If you apply for 7 days no reason to return the product, please use it carefully to ensure that the product itself, attached accessories, product appearance and packaging are not scratched or damaged.
- Within 15 days of purchase, if product quality problems occur, consumers can choose to replace products with the same model and specifications
- During the free warranty period, after the product is returned, the product will be subject to quality inspection. After the fault is confirmed, the product can be repaired, refurbished or replaced; for the product that is tested correctly, it will be returned as it is.

One of the following situations (including but not limited to) is not within the scope of normal after-sales services:

- No "Three Guarantees" voucher or missing valid invoices or exceeding the "Three Guarantees" service period.
- Losses caused by force majeure such as fire, flood, earthquake, etc.
- The product is damaged by external factors or man-made actions, such as mechanical damage caused by water ingress, severe oxygen deficiency or rusting of the product, etc.
- Product failure caused by self-disassembly and destruction.
- Product failure or loss caused by installation and use not in accordance with the requirements of the product manual.
- The product model or actual product on the warranty certificate does not match, or has been altered.
- The product cannot be used normally due to the consumer's own mobile phone model or version.
- The damage caused by the transportation, loading and unloading on the way back to the factory for maintenance.
- Other non-product's own design, technology, manufacturing, quality and other problems caused failure or damage.

STATEMENTS AND RECYCLING

Statement

- If the external wire of this product is damaged, it must be replaced by the manufacturer or its service agent or a similarly qualified person to avoid danger.
- The technical parameters given in this manual are all typical values and are for reference only. The specific parameters are subject to the actual measurement report.
- All product illustrations in this manual are schematic diagrams, and the specifics are subject to the actual goods received.
- This product is subject to change without notice

Recycling

- LED lighting products belongs to electronic products, please do recycling treatment according to the relevant WEEE directives.

BLUEVIEW ELEC-OPTIC TECH CO.,LTD

Tel.: +86-28-8148 0011
 Fax: +86-28-8148 1258

Web.: www.blueviewled.com
 Email: sales@blueviewled.com

Add.: No. 1000, Section 2, Konggang 2nd Road, Shuangliu, Chengdu 610207, Sichuan, CHINA