

# MINI DIMMER

## BV-LV13



### FEATURES

- In Bluetooth mode, it supports app, voice, remote control and other control modes to achieve rich color gradient effects
- The mobile APP supports IOS and Android
- Input voltage 5V, maximum load power 15W ; Input voltage 48V, maximum load power 144W
- Product size: 63.7\*23.7\*11.6mm

### APPLICATION

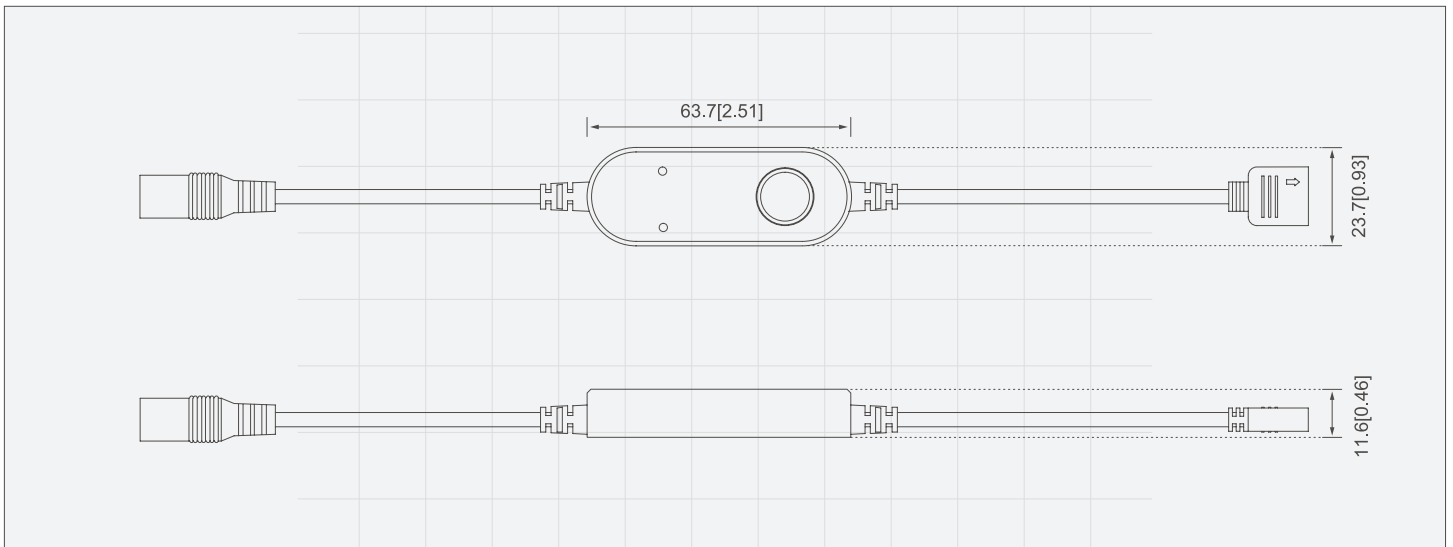
- Suitable for indoor and outdoor dimming

### ORDERING CODE

BV	L	V	1	3
Company Code	Lower voltage	Constant voltage PWM dimming	1A	RGB3 output

### PROFILE DRAWING

unit:mm



## PRODUCT FUNCTION



time switch



color adjustment



voice control



scene change



brightness adjustment

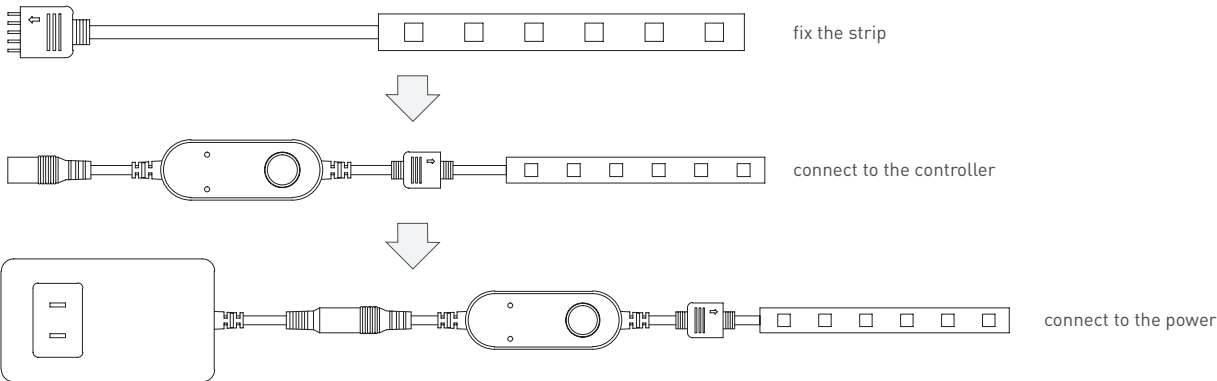


APP control



One key operation

## INSTALLATION DIAGRAM



### Note:

The distance of the mobile phone shall be controlled within 10m, and Bluetooth, positioning, data flow or Wi-Fi shall be turned on.  
Scan the QR code of the outer package / manual to download and install the app of "smartlife" or search and download the app in the app store.  
If you already have an account, click "log in" with an existing account.



## NETWORK ACCESS SETTINGS

Power on according to the installation diagram, and press and hold the dimmer button for more than 5 seconds to keep the product working.

Open the smart life APP as shown on the right, download the APP, if you have already downloaded, skip this step.

Add devices according to the control method.

After the addition is successful, you can enter the dimming page. If not, please repeat the network access operation 1-3 times.

### APP download instruction



Scan to download App

### 'Smart Life' APP

**IOS**

Search and download "Smart Life" in APP store, or scan QR code to download

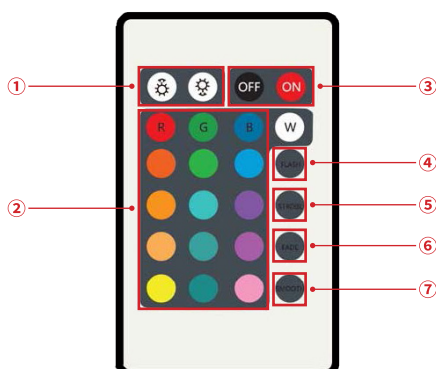
**Android**

Search and download "Smart Life" in Google store, or scan QR code to download

## CONTROL MODE

### Remote control

- 1—brightness control
- 2—color adjustment
- 3—switch
- 4—jump effect
- 5—flicker effect
- 6—gradient effect
- 7—smoothing effect



### Voice control

You need to add Alexa, Google Assistant, Tmall Genie, DuerOS and other intelligent audio.

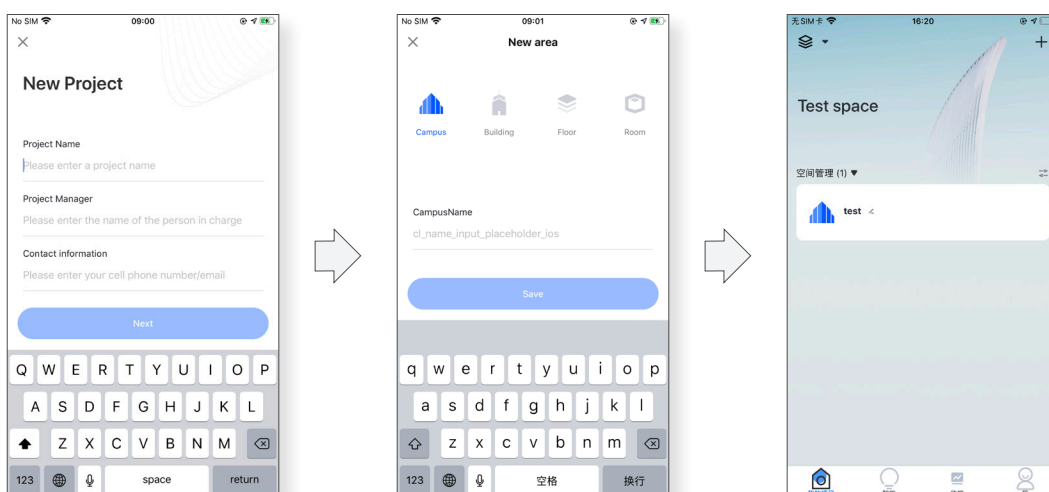


## NETWORK ACCESS SETTINGS (Make sure the power supply is well mounted)

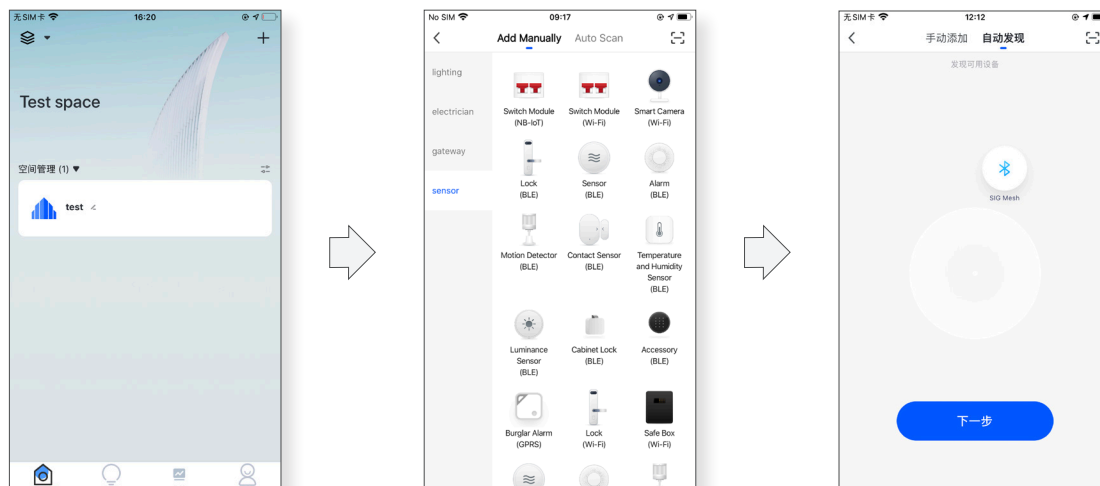
### 1 Scan to download APP,create new account



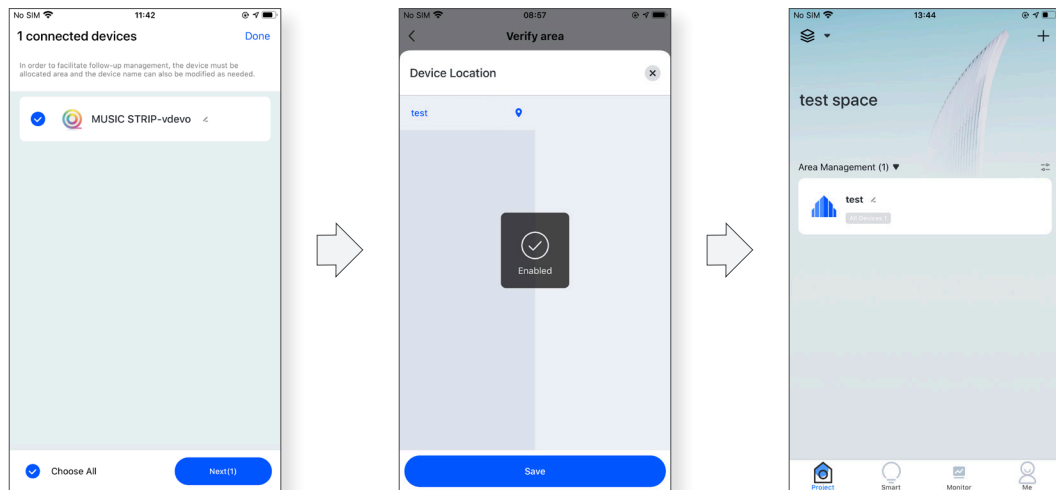
### 2 Create new project and space



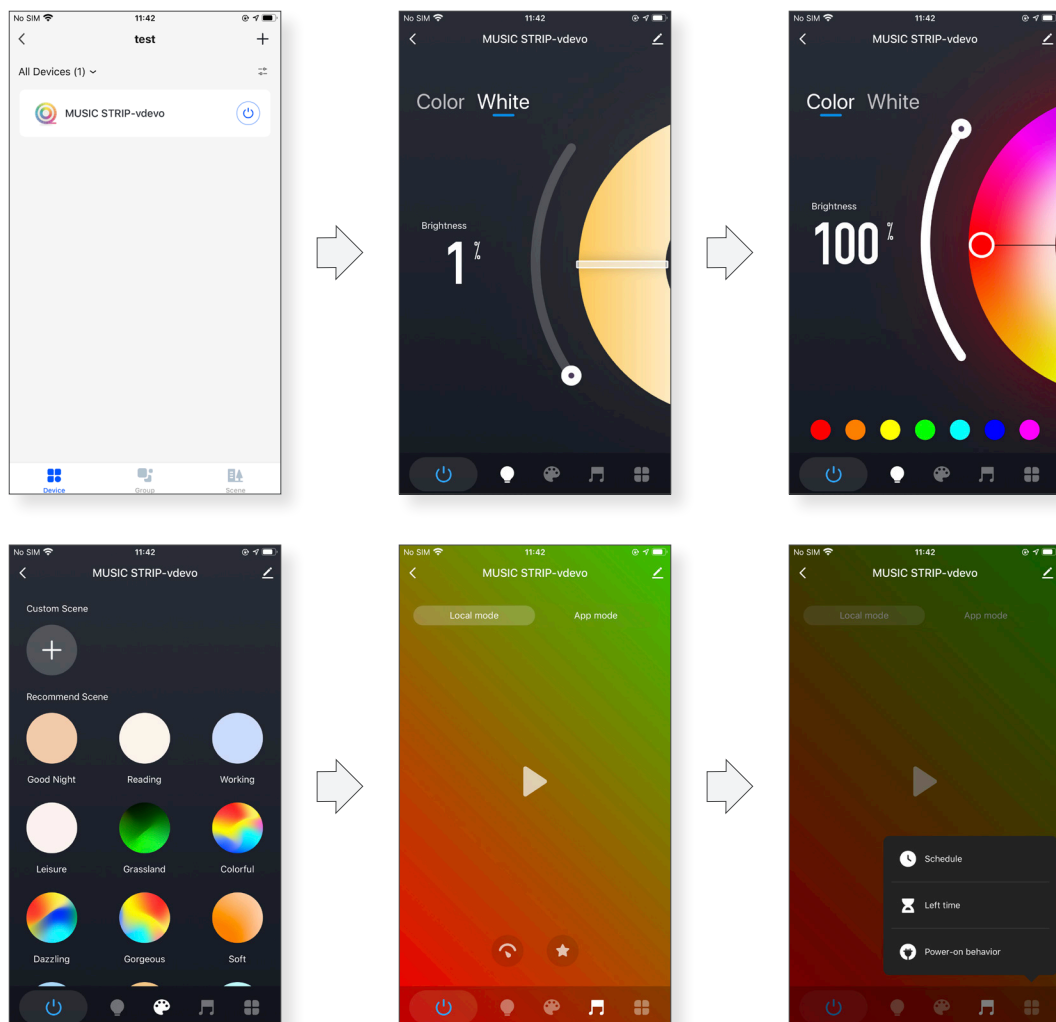
### 3 Add advice



## Device partition management



## Device function



---

## COMMON FAULTS AND TROUBLESHOOT

### 1. The phone cannot connect the device?

Please make sure that the mobile phone can access the Internet and turn on the Bluetooth; if it still cannot be connected, please press and hold the button for 5S to reset.

### 2. How to restore the factory settings of the device?

Long press the button for 5 seconds to turn on light strip, and the after 10 seconds the light strip will turn off to restore the factory settings.

### 3. How to connect to smart speakers?

To connect to the smart speaker, please purchase the Blueview smart BLE gateway. After adding the gateway, follow the instructions of the APP;

#### Warning:

Do not use in humid and high temperature environment

Do not use in bed

#### BLUEVIEW ELEC-OPTIC TECH CO.,LTD

☐ Tel: +86-28-8148 0011  
☐ Fax: +86-28-8148 1258

☐ Web.: [www.blueviewled.com](http://www.blueviewled.com)  
☐ Email: [sales@blueviewled.com](mailto:sales@blueviewled.com)

☐ Add.: No. 1000, Section 2, Konggang 2nd Road, Shuangliu, Chengdu 610207, Sichuan, CHINA