

# SMART MULTI-CHANNEL ELECTRONIC CIRCUIT BREAKER

## BV-HK4P-40A



### FUNCTION

- Wireless communication technology;
- Can be controlled locally and remotely by APP;
- Timing switch function, one key full on/full off;
- Single or multiple control can be carried out;
- Energy-saving and power-saving, convenient for use;

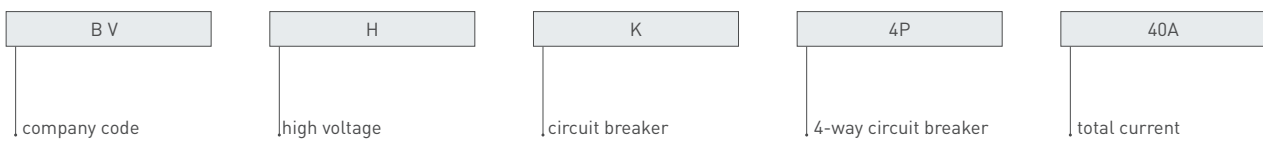
### APPLICATION

Suitable for the switch control of indoor and outdoor electrical circuits

### INSTALLATION

Clips

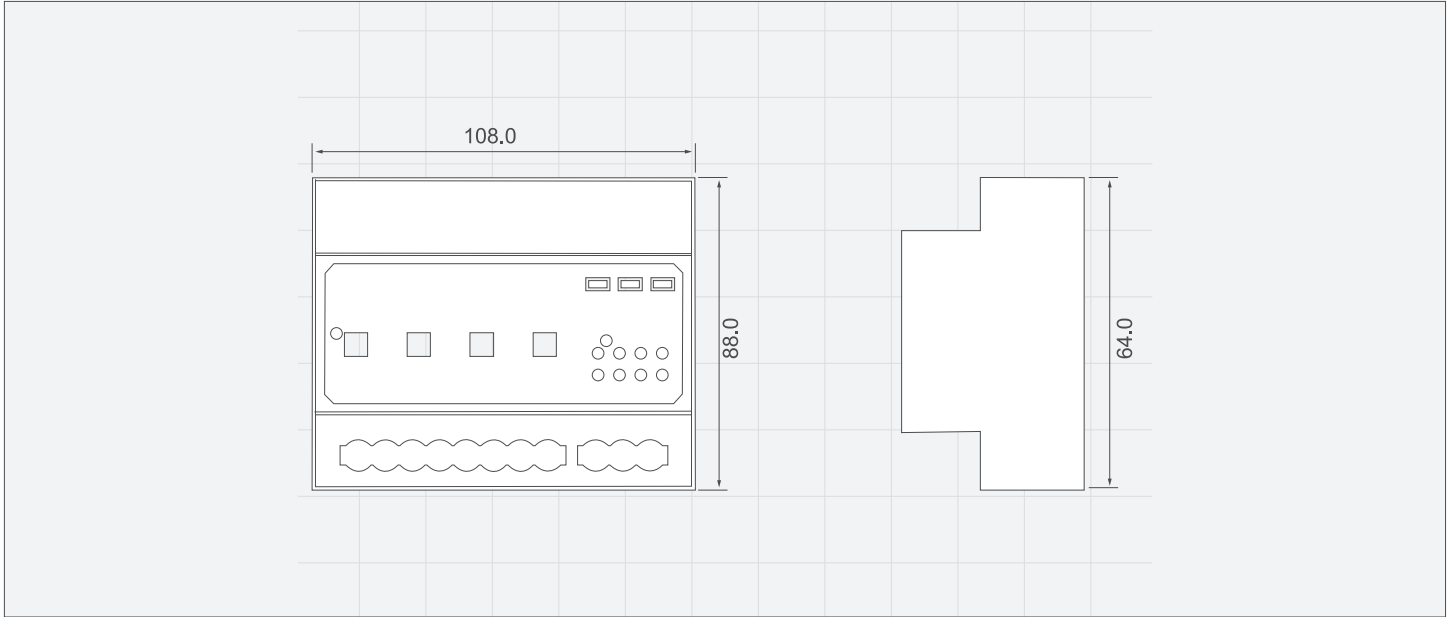
### ORDERING CODE



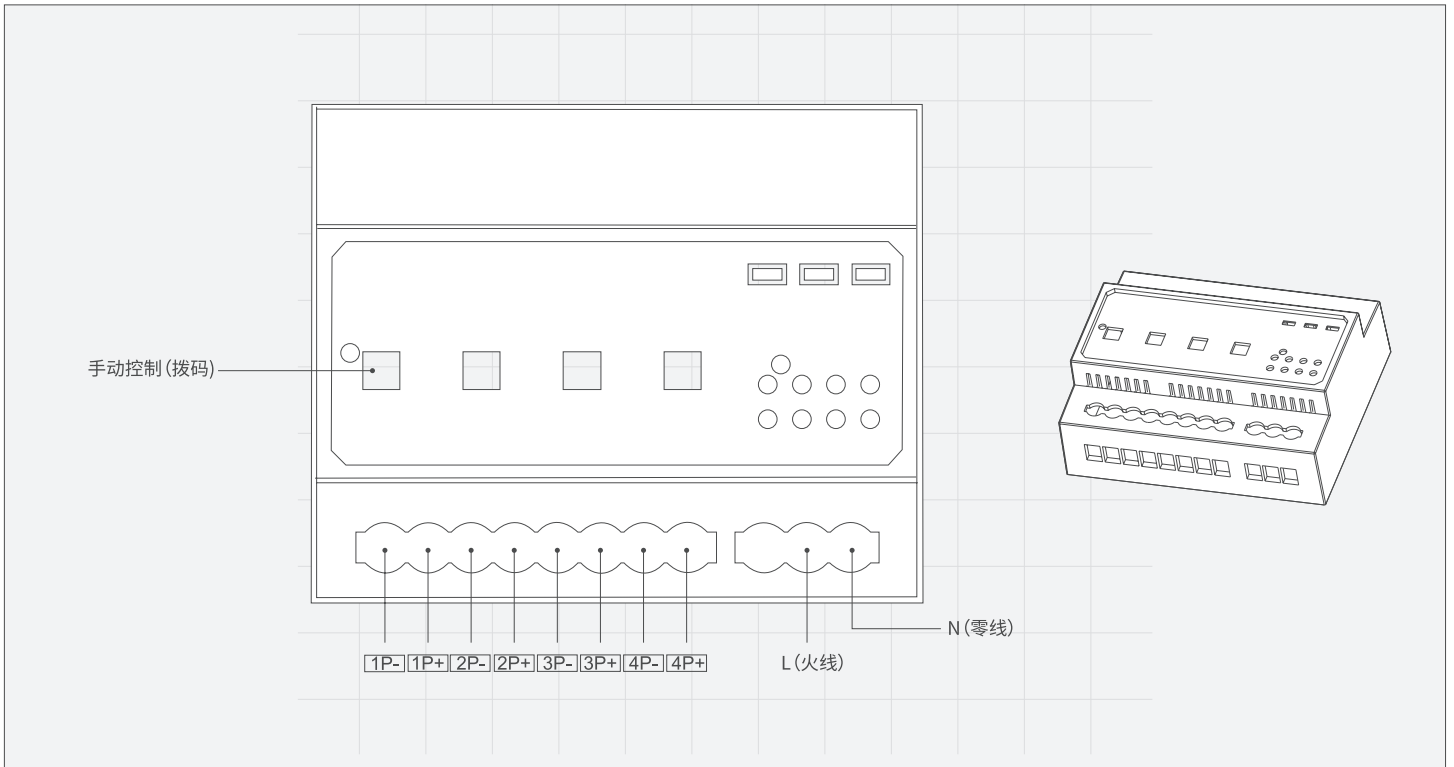
### TECHNICAL PARAMETERS

Model	BV-HK4P-40A
Static Power	< 0.2W
Inpput Voltage	12 VDC
Rated Load	5000W (resistive)
Working temperature	-10°C~50°C
Working humidity	≤95%RH (non-condensing)
Product Size	108*88*64mm
Wireless standard	NB-IOT

PROFILE DRAWING



CONNECTION DIAGRAM

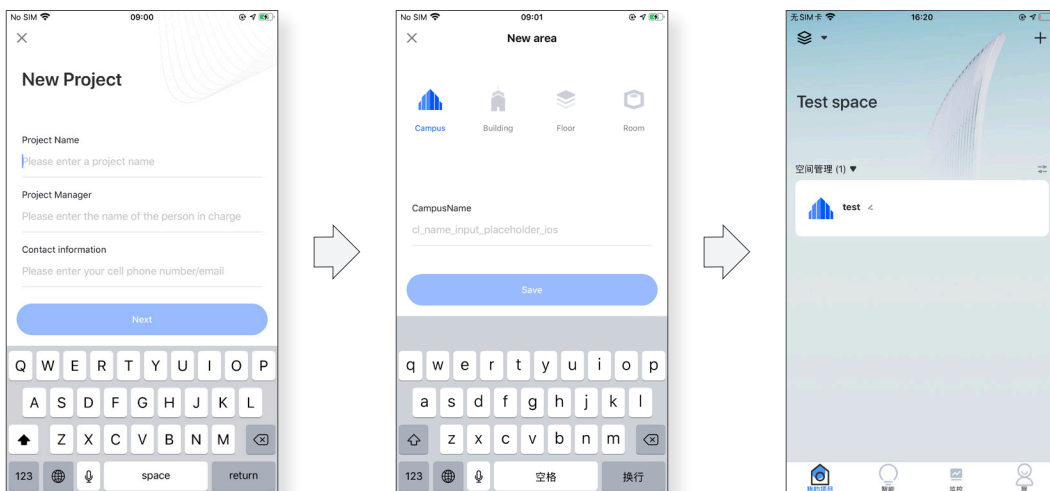


NETWORK ACCESS SETTINGS (Make sure the power supply is well mounted)

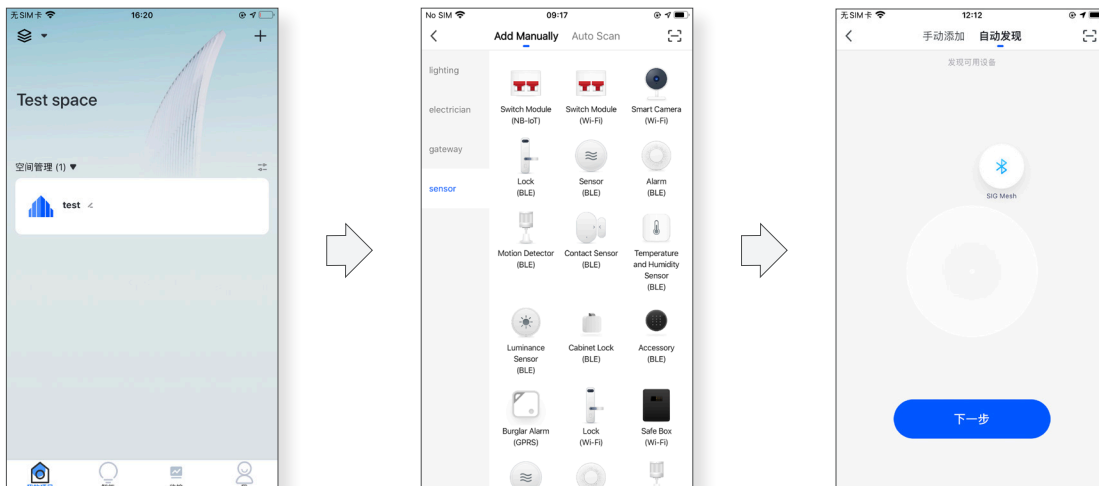
1 Scan to download APP,create new account



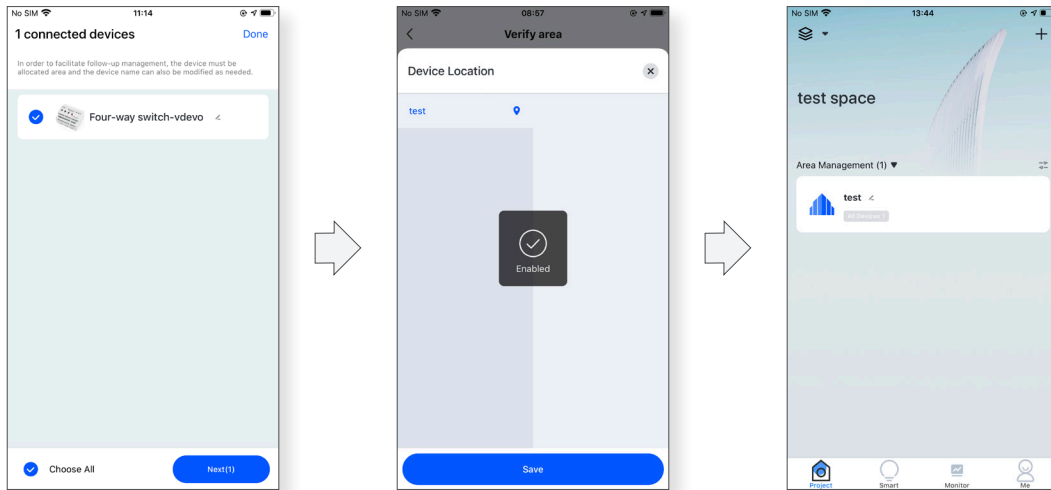
2 Create new project and space



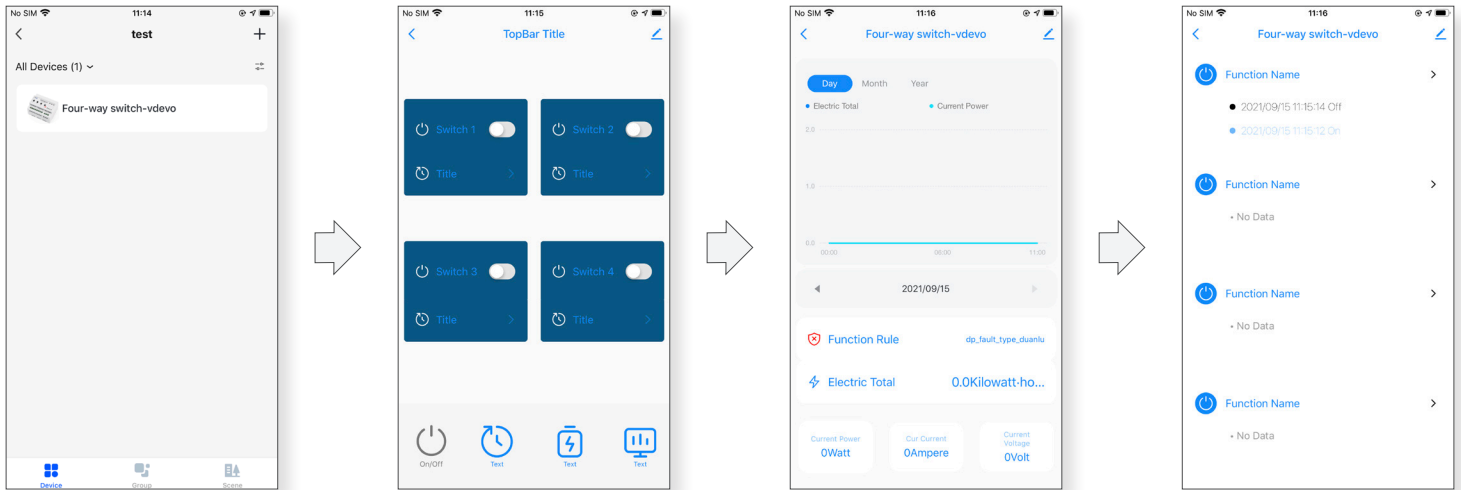
3 Add advice



**Device partition management**



**Device function**



**EXEMPTION ORDINANCE**

- Failure to follow the instructions for installation, use, maintenance, and storage in accordance with the regulations may result in damage to the product or termination of the service provided by the product.
- The warranty time has passed.
- Unauthorized modification of the product may cause malfunction or unauthorized disassembly of parts.
- Accidental damage to the product, such as unsuitable voltage input, high temperature, water ingress, mechanical damage, breakage, etc.
- Natural factors or force majeure cause product damage.
- Other failures or damages that are not caused by the product's own design, technology, manufacturing, quality and other issues.
- The test data of the product is for reference only

**MOUNTING PRECAUTIONS**

- Before power on, ensure the lamps are connected well.
- Please cut off the power before installing the product to prevent electric shock.
- This product is limited to indoor use, pay attention to waterproof.
- Please use it within the specified voltage range to avoid the power being burnt out.
- Products should be avoided in high temperature, high humidity, high corrosion place, so as not to affect the product lifetime.
- The product should not be installed in the metal shielding place, so as not to affect the Bluetooth signal.
- If the mobile app can't connect to the power supply device during the initial use of the client, please press the reset button on the power supply.
- Long press the reset button on the power supply for 5 seconds to restore the factory settings.

## WARRANTY ORDINANCE

### In case of product performance failure caused by non-human damage during the warranty period, you can ask for the following normal after-sales services:

- Within 7 days of purchase, if there is a product quality problem, consumers can choose to install the invoice price for one-time return or exchange or replace the product with the same model and specification
- If you apply for 7 days no reason to return the product, please use it carefully to ensure that the product itself, attached accessories, product appearance and packaging are not scratched or damaged.
- Within 15 days of purchase, if product quality problems occur, consumers can choose to replace products with the same model and specifications
- During the free warranty period, after the product is returned, the product will be subject to quality inspection. After the fault is confirmed, the product can be repaired, refurbished or replaced; for the product that is tested correctly, it will be returned as it is.

### One of the following situations (including but not limited to) is not within the scope of normal after-sales services:

- No "Three Guarantees" voucher or missing valid invoices or exceeding the "Three Guarantees" service period.
- Losses caused by force majeure such as fire, flood, earthquake, etc.
- The product is damaged by external factors or man-made actions, such as mechanical damage caused by water ingress, severe oxygen deficiency or rusting of the product, etc.
- Product failure caused by self-disassembly and destruction.
- Product failure or loss caused by installation and use not in accordance with the requirements of the product manual.
- The product model or actual product on the warranty certificate does not match, or has been altered.
- The product cannot be used normally due to the consumer's own mobile phone model or version.
- The damage caused by the transportation, loading and unloading on the way back to the factory for maintenance.
- Other non-product's own design, technology, manufacturing, quality and other problems caused failure or damage.

## STATEMENTS AND RECYCLING

### Statement

- If the external wire of this product is damaged, it must be replaced by the manufacturer or its service agent or a similarly qualified person to avoid danger.
- The technical parameters given in this manual are all typical values and are for reference only. The specific parameters are subject to the actual measurement report.
- All product illustrations in this manual are schematic diagrams, and the specifics are subject to the actual goods received.
- This product is subject to change without notice

### Recycling

- LED lighting products belongs to electronic products, please do recycling treatment according to the relevant WEEE directives.

### BLUEVIEW ELEC-OPTIC TECH CO.,LTD

☐ Tel: +86-28-8148 0011  
☐ Fax: +86-28-8148 1258

☐ Web.: [www.blueviewled.com](http://www.blueviewled.com)  
☐ Email: [sales@blueviewled.com](mailto:sales@blueviewled.com)

☐ Add.: No. 1000, Section 2, Konggang 2nd Road, Shuangliu, Chengdu 610207, Sichuan, CHINA