

# BV-WG-BZ

## APPLICATION

Connect multiple devices using different protocols for smart linkage



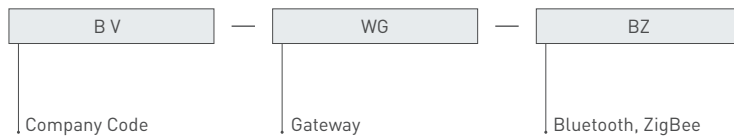
## FEATURES

- One-click networking
- Local / cloud scene automation
- Support WI-FI+ Bluetooth +ZigBee multi-protocol communication
- Support security function, product access to security SAAS platform
- Bluetooth MESH (SIG) and ZigBee total equipment guarantee 128 stable controls

## PRODUCT FUNCTION

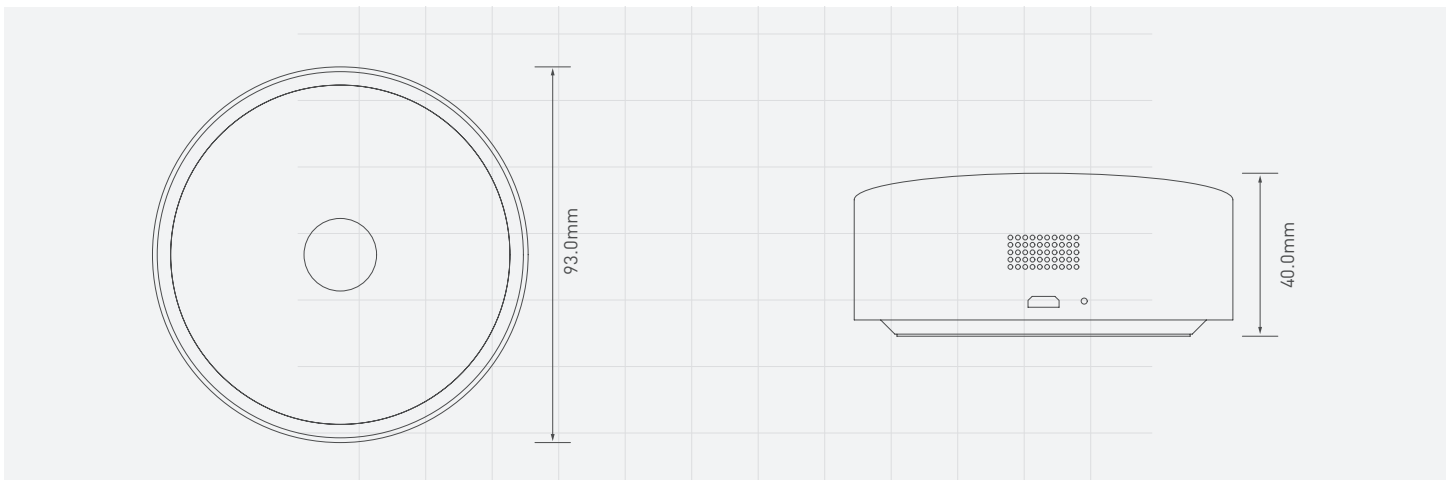
- remote control
- Add and reset devices

## ORDERING CODE



## PROFILE DRAWING

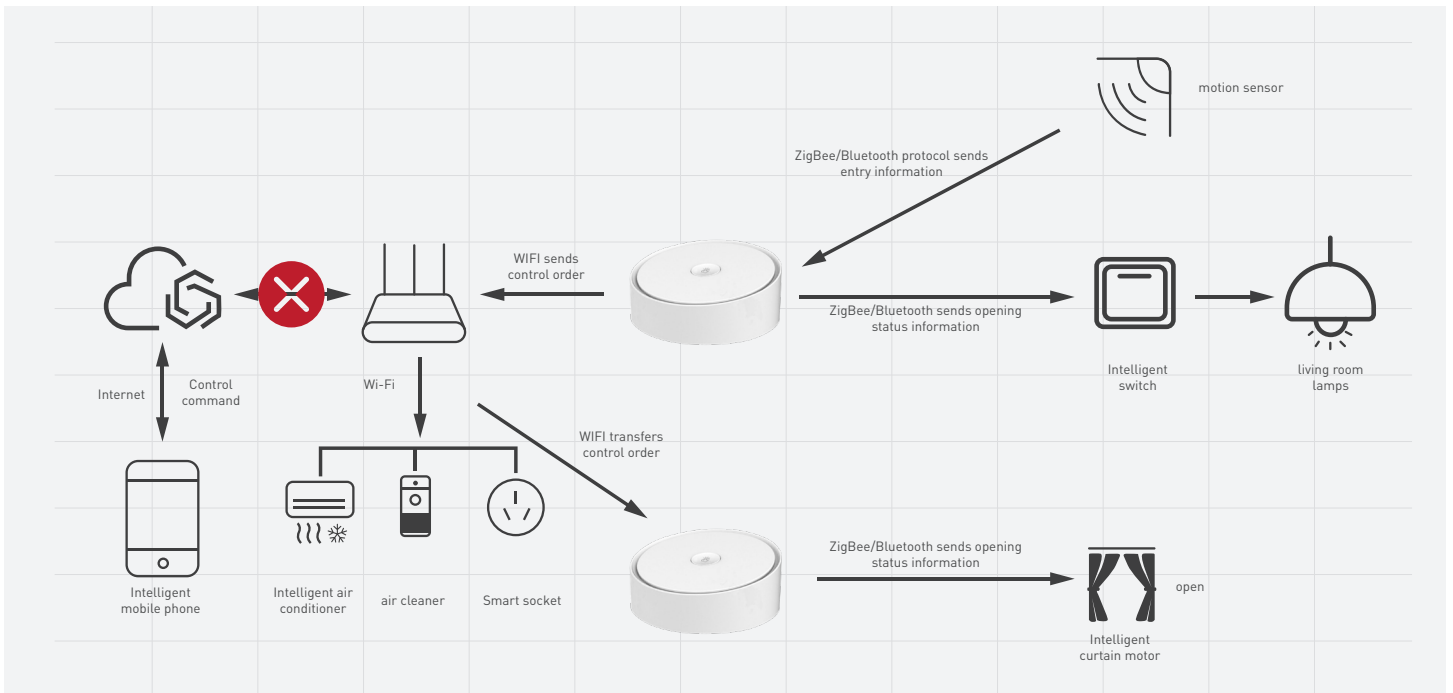
unit:mm



SPECIFICATION

Input	Power input	5V/1A	
Environment	Working temperature	Tcase=-10~45°C	
	Working humidity	5 ~ 90%RH, non-condensing	
Other Parameters	Product Size L*W(mm)	93*93*40	
	Package size(mm)	/	
	Net Weight(kg)	119g	
Note	Wireless protocol	2.4G WI-FI/Zigbee/BLE/Mesh	
	Charging	Micro-USB Interface data bus	
	Button	Touch the button to reset / distribution network	
	Indicator	Indicates the network / working status	
	Red indicator		connected (indicator on)
			waiting for connection (indicator flashes)
			Wi-Fi information has been configured but can not be connected (indicator off )
	Violet indicator		allow the sub devices get access to the network (indicator on)
		not active (indicator flashes)	
		active (indicator off)	

PRODUCT COMMUNICATION PROCESS



NETWORK ACCESS SETTING

1. Connect the mobile phone to 2.4GHz Wi-Fi;  
Ensure that the mobile phone and the smart multi protocol gateway are in the same Wi-Fi network.
2. Download and open the app;  
Search the app store for "blueview smart control" or scan the QR code on the right to download and install it;  
If you download it for the first time, please click to create a new user; If you already have an account, click "login with existing account";

- Connect the gateway to the power supply, and confirm that the network indicator (blue) is flashing (if the indicator is in another state, press and hold the function button until the blue light flashes);
- Make sure that the Bluetooth of the mobile phone is turned on and has been connected to the home 2.4GHz band router. At this time, the mobile phone and the gateway should be in the same local area network;
- Open the APP homepage and click the add button "+" in the upper right corner ;
- Find "Auto Discovery" on the page, and then follow the prompts to add the device; after the addition is successful, partition the space, you can find the gateway in the corresponding space;



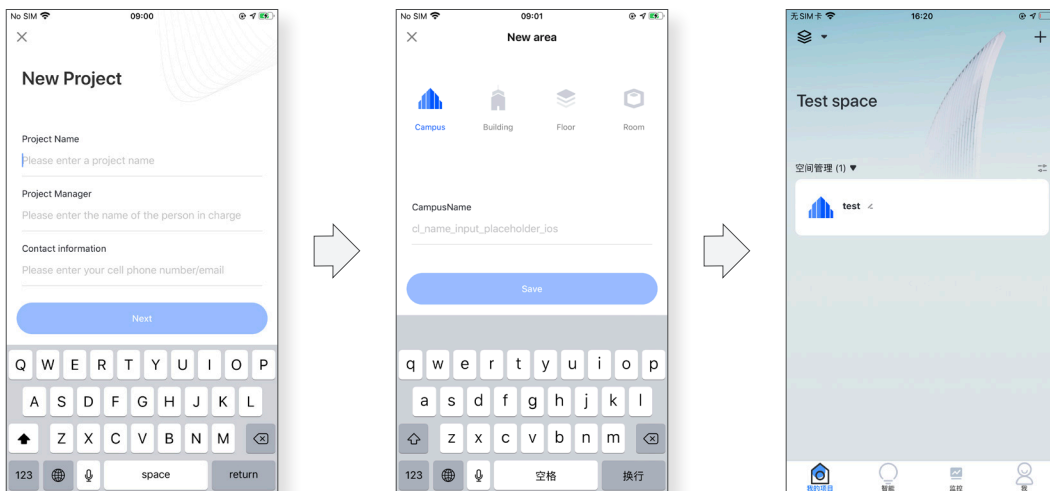
Blueview smart control APP

NETWORK ACCESS SETTINGS (Make sure the power supply is well mounted)

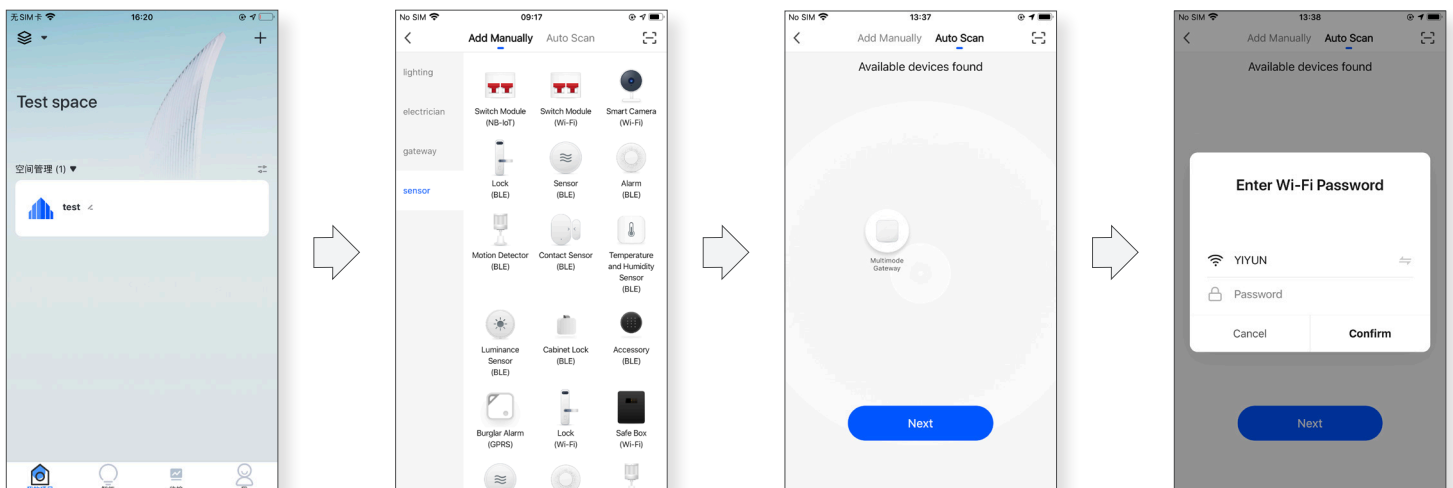
1 Scan to download APP,create new account



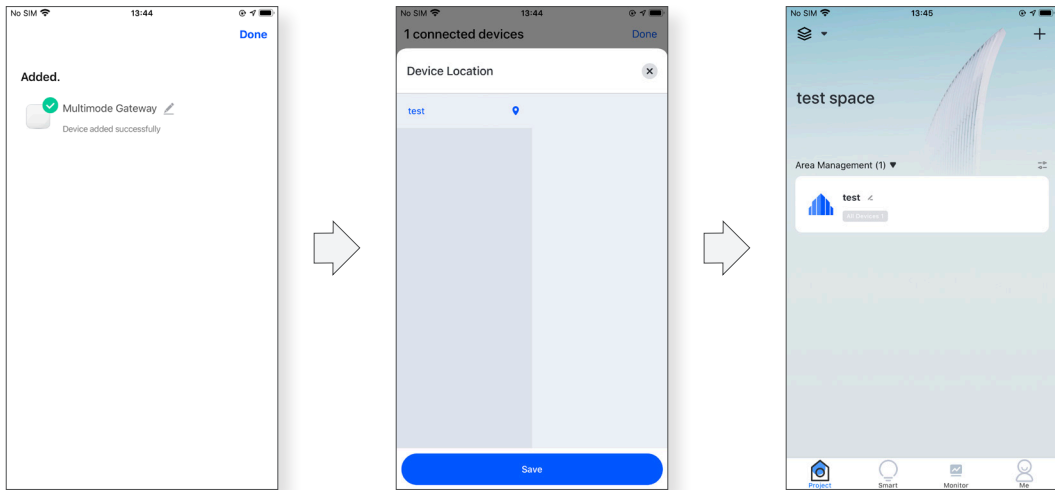
2 Create new project and space



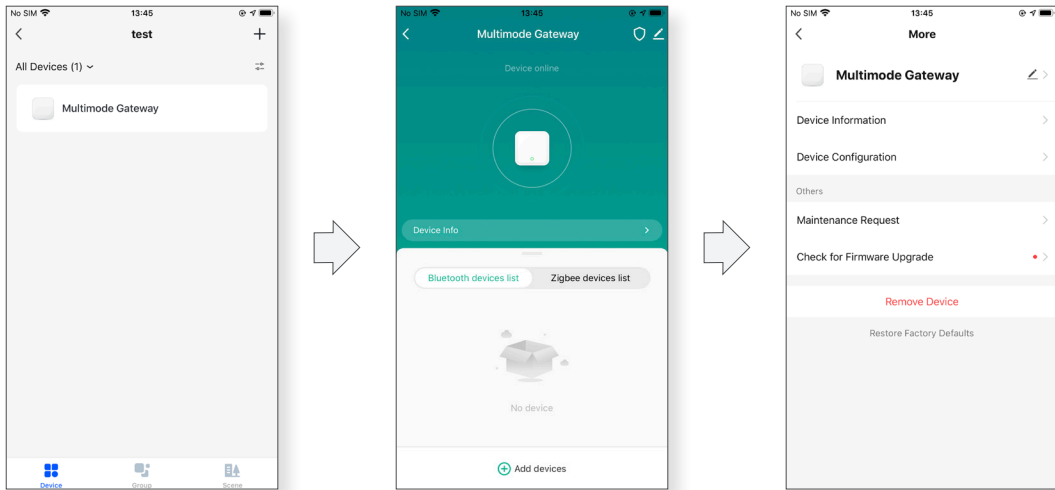
3 Add advice



**Device partition management**



**Device function**



**STATEMENTS AND RECYCLING**

**Statement**

- If the external wire of this product is damaged, it must be replaced by the manufacturer or its service agent or a similarly qualified person to avoid danger.
- The technical parameters given in this manual are all typical values and are for reference only. The specific parameters are subject to the actual measurement report.
- All product illustrations in this manual are schematic diagrams, and the specifics are subject to the actual goods received.
- This product is subject to change without notice

**Recycling**

- LED lighting products belongs to electronic products, please do recycling treatment according to the relevant WEEE directives.

**BLUEVIEW ELEC-OPTIC TECH CO.,LTD**

☐ Tel.: +86-28-8148 0011  
☐ Fax: +86-28-8148 1258

☐ Web.: www.blueviewled.com  
☐ Email: sales@blueviewled.com

☐ Add.: No. 1000, Section 2, Konggang 2nd Road, Shuangliu, Chengdu 610207, Sichuan, CHINA