

# SMART DIMMER DRIVER

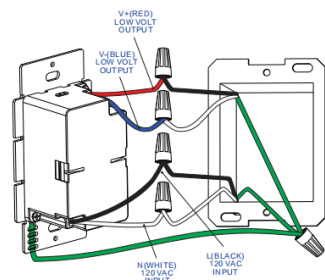
## USER MANUAL OF APPLICATION

To control the product with mobile APP or smart speaker, please refer to the manual!

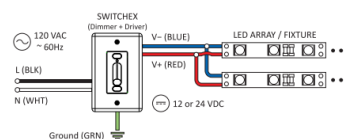
Smart speakers supported by smart dimmer driver include Alexa, Google Assistant, Tmall Genie, Rokid etc.

### 01 ▶ Device Wiring

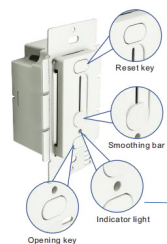
Connect the product correctly as the figure shows and power on for matching. (More details please refer to the User Manual of product)



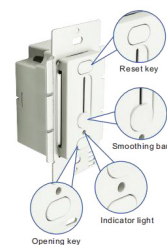
SYSTEM DIAGRAM



The indicator light will flashing when matching, and if there is no flashing, you can press the Reset key over 5s for matching. (You can long press the Reset key again for matching after the device is connected to internet.)



Light flashing indicates the device is matching

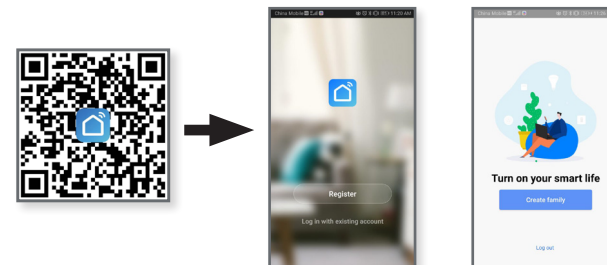


Long press it over 5s for matching again.

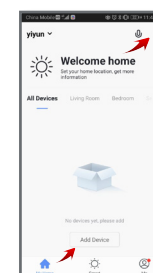
### 02 ▶ Download APP

Connect the mobile phone to the home WIFI (Currently support 2.4G WIFI).

Search "Smart Home" in APP store or scan the barcode on packing box or user manual to download and install the APP. It needs to register for the first time use, click on "Register" to register. Or if you already have an account, click on "Log in". After log in, click on "Create family" to create a new family.

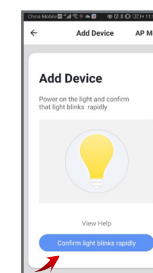
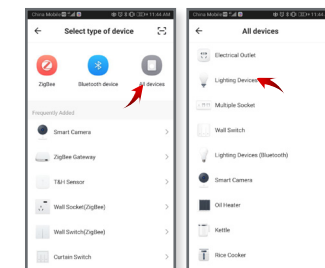


### 03 ▶ Connect to Internet



Open "My Home" page of the Smart Home APP, and click "+" or "Add Device" at upper right corner.

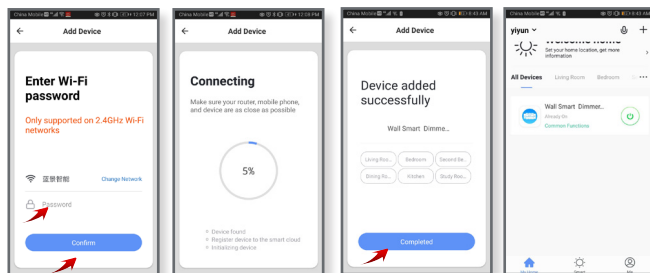
Click on "All Device" and select "Lighting Devices" in devices list.



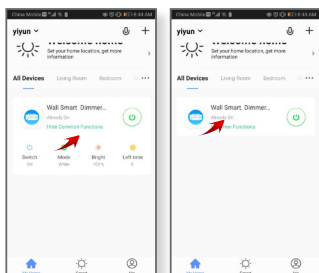
Ensure the device is matching, and click the "Confirm light device rapidly" to connect the internet.

► Connect WIFI and input passwords, then click on “Confirm”.

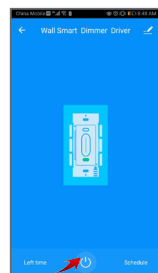
► After the device is added successfully, you can see the device connected to the internet on “My Home” page.



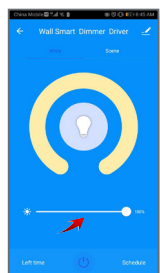
## 04 ► Device Control-Switch Dimming



◀ Click on “Common Functions” on the “My Home” page to open shortcuts. And click the corresponding shortcut button for operations such as switching, dimming, mode and timing etc.



Click the device icon to enter the control page, click the switch button to turn off the device, and click again to open the device ►

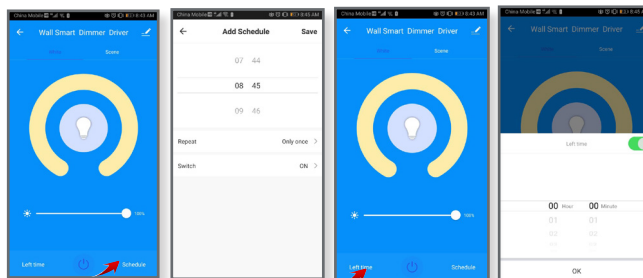


◀ You can click on the dimming slider to dimming after the device is turned on.

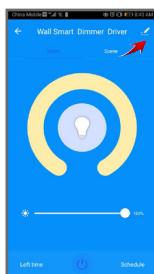
## 05 ► Device Control-Timing and Delaying Setting

► On timing page, you can add different schedules of timing and repeat. This function is similar to an alarm clock, the light will wake you up in the morning and accompany you to sleep at night to give you a healthy lifestyle.

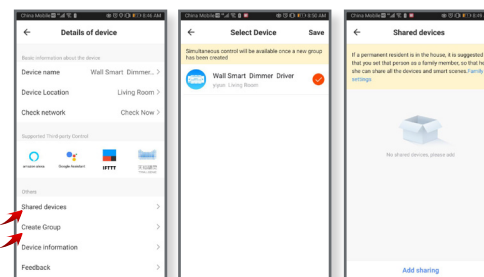
► On the delaying page, you can set the delay off function to make the lights turn off automatically after you falling asleep.



## 06 ► Device Control-Creat Groups and Share the Device



◀ Click the edit button in the upper right corner of the control page for device information editing, such as create groups, share devices, device information changes, firmware upgrades, remove devices etc.



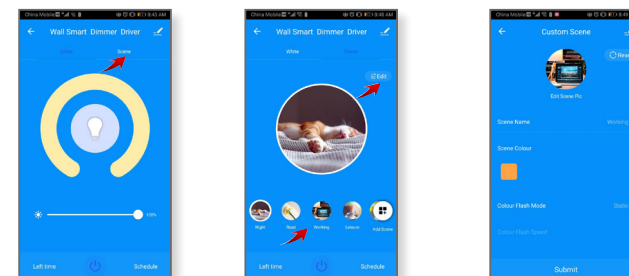
► Click on “Create Group” to creat groups.

► Click on “Shared devices” to share the device

## 07 ► Device Control-Scene Control

► Click the “Scene” button on the control page to enter the scene setting and control page.

► Click the corresponding button for direct scene dimming, and click “Edit” to customize the scene.



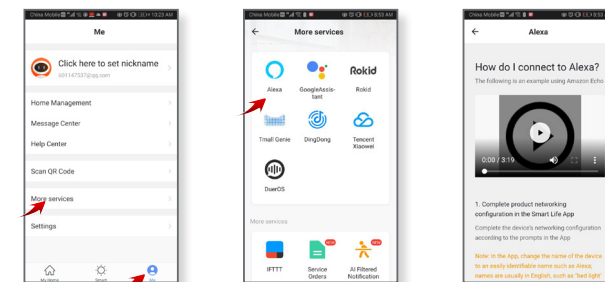
## 08 ► Connect to Smat Speaker

If you want to control the device with smart spraker ( Alexa Google assistant Rokid Tmall Genie ), please refer to the following procedure.

► Click “ME” and “More services” to enter the page.

► Click on the corresponding smart speaker icon such as Alexa to enter the detailed operation guide page.

► Follow the instructions on the operation guide page or watch the video to operate.



## 09 ► Help Center

If you have more questions about the APP, please click “Me” and “Help Center” for help.

