



**STORE
LIGHTING**
2023



BLUEVIEW



COMPANY PROFILE

BLUEVIEW ELEC-OPTIC TECH CO.,LTD. is a pioneer developer in China's LED signage lighting and linear lighting market, not only participating but also promoting the development of the entire LED industry.

Blueview has been offering professional integrated and ingenious solutions with abundant products including signage, lighting products and others since 2004.

To lead the innovation trend, Blueview introduced "Smart Control" to its products which triggered a major breakthrough for the whole LED industry. Blueview aims to provide customers with complete LED smart lighting system solutions, from lamps to systems to IOT, everything.

We always pursuit the faith that Better light could bring Better life and we never slow down the path for innovation&creation.

VALUE ADDED

- Our vision is continually creating and being a part of the LED lighting industry's new history.
- Our mission is to help our customers build the value added lighting solutions.

OUR VALUES

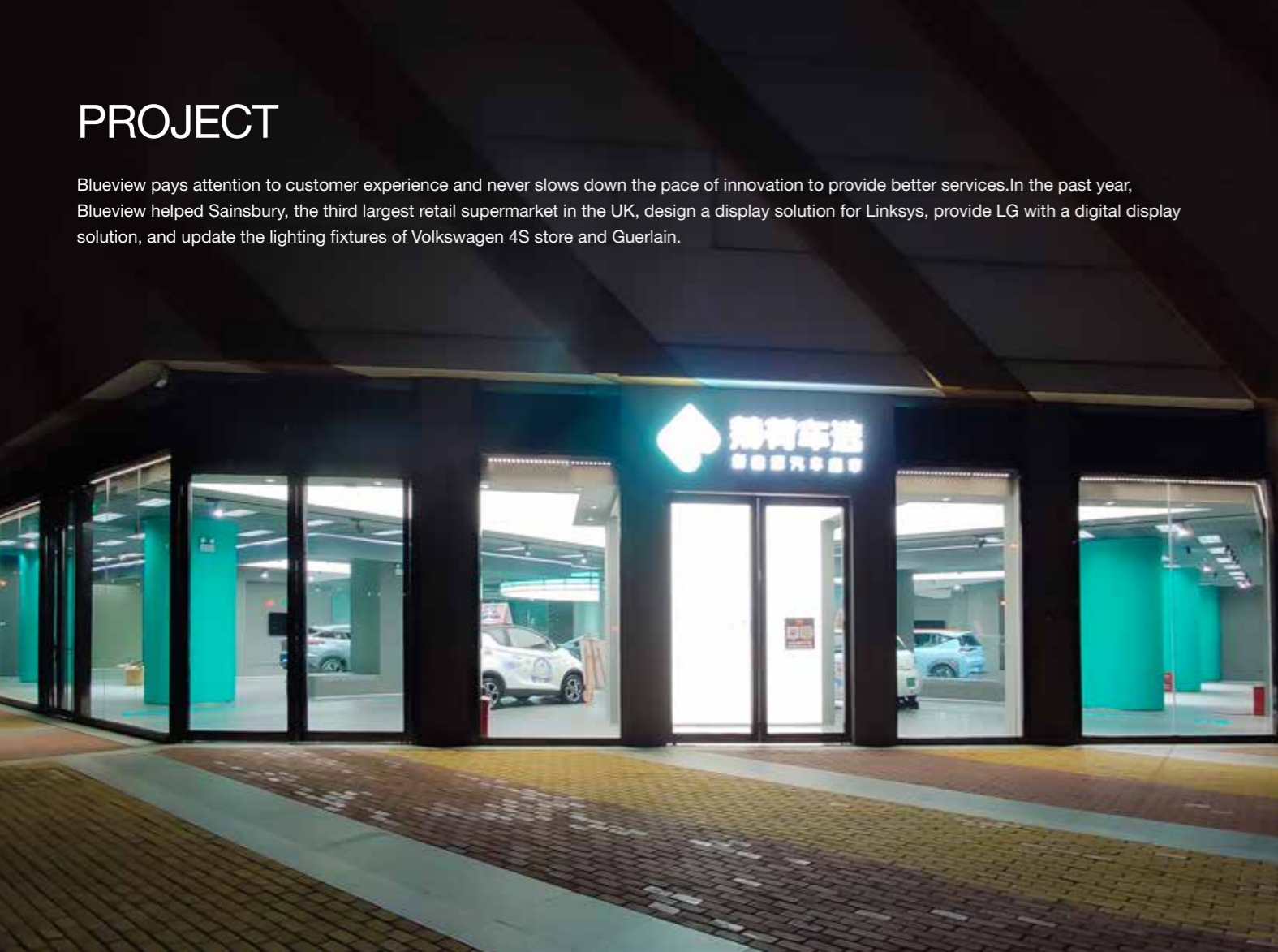
- Team-Work
- Results-driven
- Active listening
- Customer satisfaction
- Commitment to continuous improvement
- Solid quality with competitive price

COMPANY PLANNING

- 🏆 Keep leading in the LED advertising signage industry
- 💡 Realize enterprise value through innovation and promote industry development
- 📊 Strive to exceed 800 million RMB in sales and output value within three years
- 🏢 strive to become a public company within four years

PROJECT

Blueview pays attention to customer experience and never slows down the pace of innovation to provide better services. In the past year, Blueview helped Sainsbury, the third largest retail supermarket in the UK, design a display solution for Linksys, provide LG with a digital display solution, and update the lighting fixtures of Volkswagen 4S store and Guerlain.



RETAIL SHOP LIGHTING SOLUTIONS

As an effective auxiliary means to directly enhance customers' desire to buy, the choice, arrangement and color of lighting are particularly important. The introduction of intelligent lighting not only enhances the overall sense of lighting hierarchy and sense of technology, but also customizes scene effects and energy-saving plans on demand, reflecting the idea of humanistic lighting.



Ambient Lighting

To enhance the brand image and beautify the space, it has a strong ornamental value and needs to be coordinated with the overall lighting design.

LOGO Lighting

Design according to the VI features of the brand, strengthen brand awareness and attract attention, and generally use light strips, modules and etc.

Showcase Lighting

It belongs to the accent lighting of the store, showing the full color and detail of the garment, and generally use LED track lights, LED grille lights and etc.

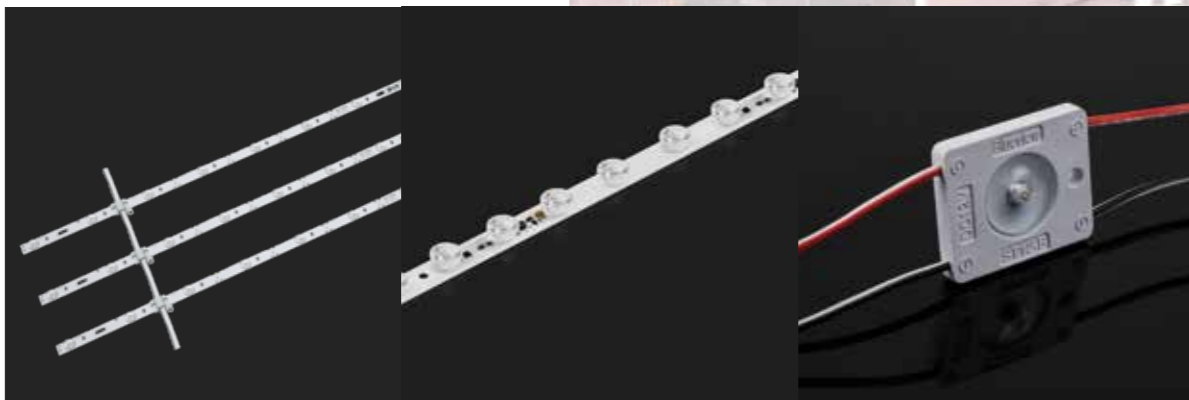
Display Cabinet / Shelf Lighting

It belongs to commercial lighting, and should pay attention to the color temperature and color rendering of the light, so that the product can be displayed more beautifully and uniquely.

LOGO LIGHTING

Product:

- Back-lit bar
- Edge-lit bar
- Module



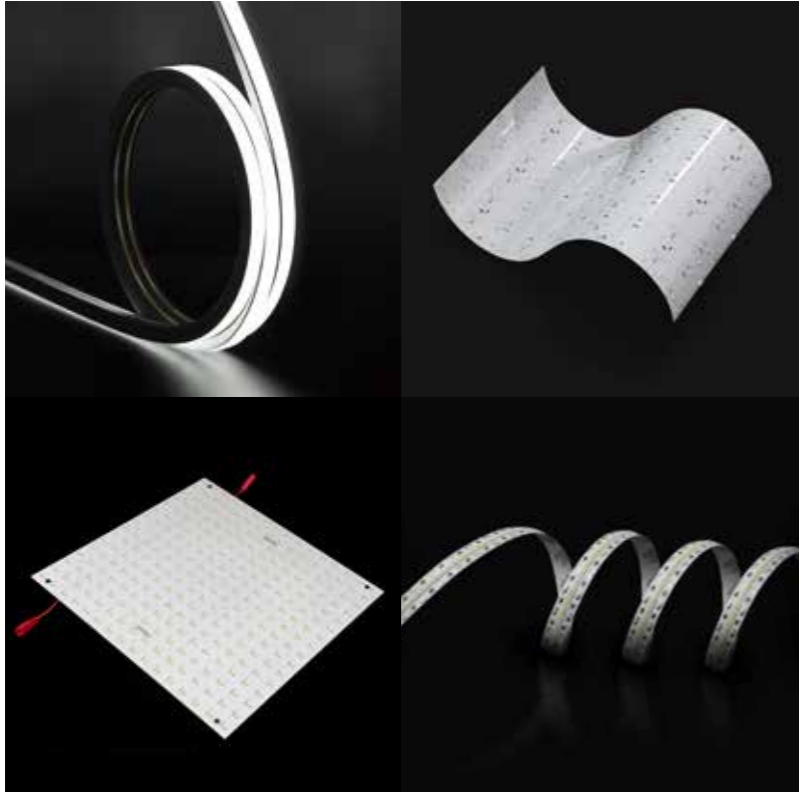


SHOWCASE LIGHTING

Product:

- ☑ Rigid bar
- ☑ Lighting fixture
- ☑ Dynamic panel





AMBIENT LIGHTING

- Product:
- ☑ Neon
 - ☑ Flexible panel
 - ☑ Dynamic panel
 - ☑ Strip

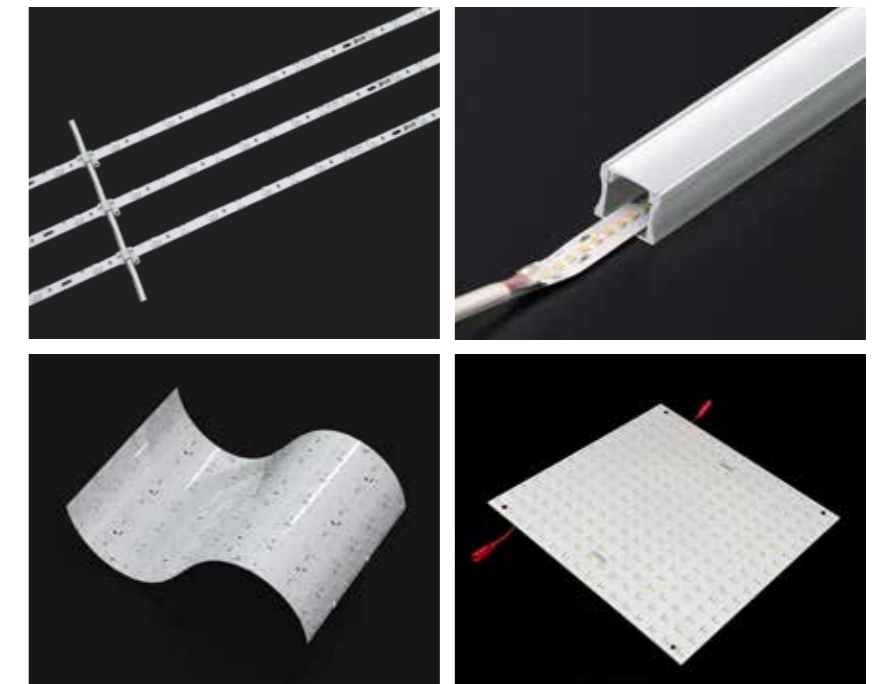




DISPLAY/ CABINET / SHELF LIGHTING

Product:

- ☑ Rigid bar
- ☑ Lighting fixture
- ☑ Flexible panel
- ☑ Dynamic panel





LED MODULE

Blueview Modules are suitable for indoor and outdoor light boxes, channel letters, etc.

Designs include through hole series, mini series, digital series, etc.



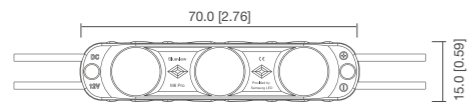
Chake



LED MODULE

STL-H | Suitable for 5-18cm depth light box, subway station, supermarket, bus station etc

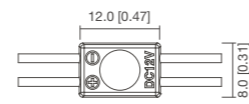
Model No :	STL-H-1	STL-H-2	STL-H-3	STL-H-4
Light Color :	W	W	W	W
Color Available (K/nm) :	6000-7000	6000-7000	6000-7000	6000-7000
Luminous Flux (lm/pcs) :	58	115	173	230
Efficacy (lm/W) :	160	160	160	160
Voltage (V DC) :	12	12/24	12	24
Power (W/pcs) :	0.36	0.72	1.08	14.4



M6-Pro

Suitable for 6-18cm depth advertising light box, signage lighting, letters etc.

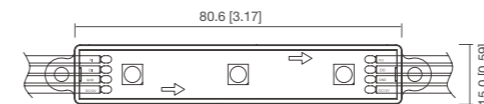
Light Color :	W
CCT (K) :	6000-7000
Luminous Flux (lm/pcs) :	116
Efficacy (lm/W) :	105
Voltage (V DC) :	12
Power (W/pcs) :	1.1



SS10

Suitable for Ultra mini letters with $W \geq 1.3\text{cm}$, $H \geq 3\text{cm}$; or advertising light box with $H \geq 3\text{cm}$.

Light Color :	W
CCT (K) :	2000-12000
Luminous Flux (lm/pcs) :	40
Efficacy (lm/W) :	110
Voltage (V DC) :	12
Power (W/pcs) :	0.36



PQ5-B

Suitable for 5-18cm depth light box, subway station, supermarket, bus station etc

Light Color :	R	G	B	RGB
Color Available (K/nm) :	620-625	525-530	465-470	100000
Luminous Flux (lm/pcs) :	5-7	10-12	2-3	19-21
Efficacy (lm/W) :	≥ 24	≥ 49	≥ 9	≥ 24.5
Voltage (V DC) :	12	12	12	12
Power (W/pcs) :	0.2	0.2	0.2	0.65



LED MODULE



LED RIGID BAR

Blueview rigid bars are suitable for 4-12cm light boxes.

Designs include single and curtain styles, multiple sizes are available and customization is supported.

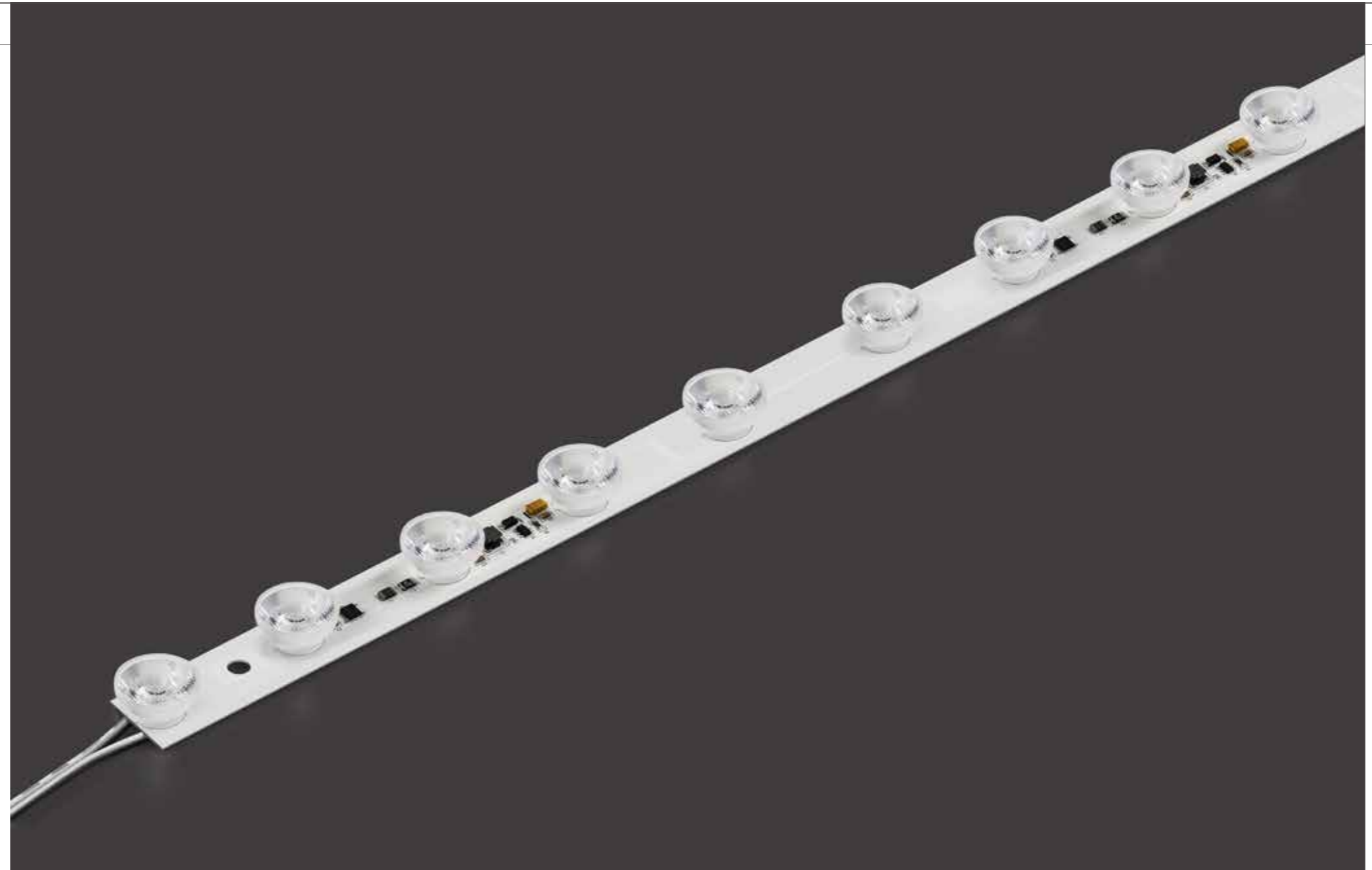


Model No :	H3-4807	H3-9313
Light Color :	W	W
CCT (K) :	8000-9000	8000-9000
Luminous Flux (lm/pcs) :	647	1201
Efficacy (lm/W) :	110	110
Voltage (V DC) :	24	24
Power (W/pcs) :	6.0	11.0

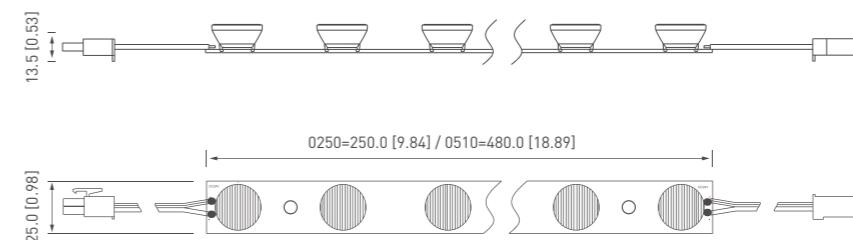
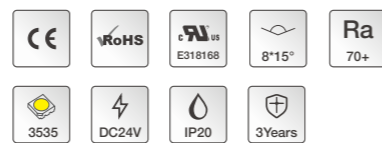


LED RIGID BAR

Suitable for double-sided back-lit light box with 8-30cm depth and a reach distance of less than 3m



Model No :	BPS300-C-0205	BPS300-C-0510
Light Color :	White	White
CCT (K) :	3000-6500	3000-6500
Luminous Flux (lm/pcs) :	972	1944
Efficacy (lm/W) :	90	90
Voltage (V DC) :	24	24
Power (W/pcs) :	10.8	21.6
LED Qty/pc :	5	10





DYNAMIC PANEL

Blueview's dynamic light box supports hard decoding of various animation and video formats, and can play various media files smoothly.

It has the advantages of low power consumption design, energy saving and long service life and especially suitable for light box advertising.

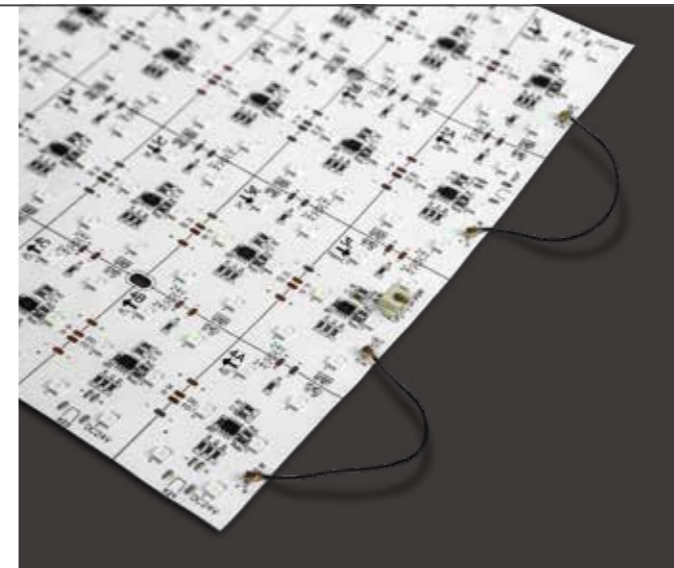




FLEXIBLE PANEL

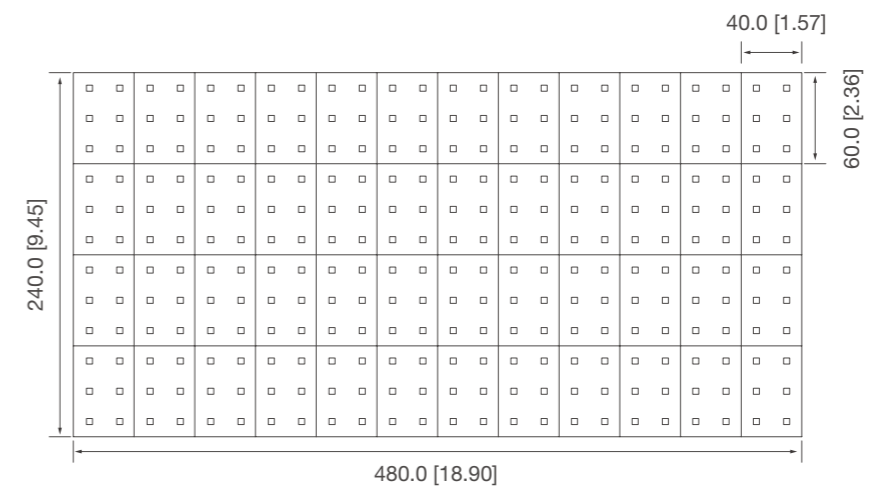
Blueview flexible panel can be cut according to actual needs, available with single color, CCT, RGB, RGBW, and widely used in walls, ceilings, light boxes and curves spaces, etc.

- W
- CCT
- RGB
- RGBW
- Digital



H150-D3-DN4040-XXX-XX

Light Color :	R	G	B	RGB
Color Available (K/nm) :	620-625	515-530	460-470	/
Luminous Flux (lm/pcs) :	548	1525	330	2343
Efficacy (lm/W) :	15	41	9	28
Voltage (V DC) :	24	24	24	24
Power (W/pcs) :	31	31	31	72



LED NEON

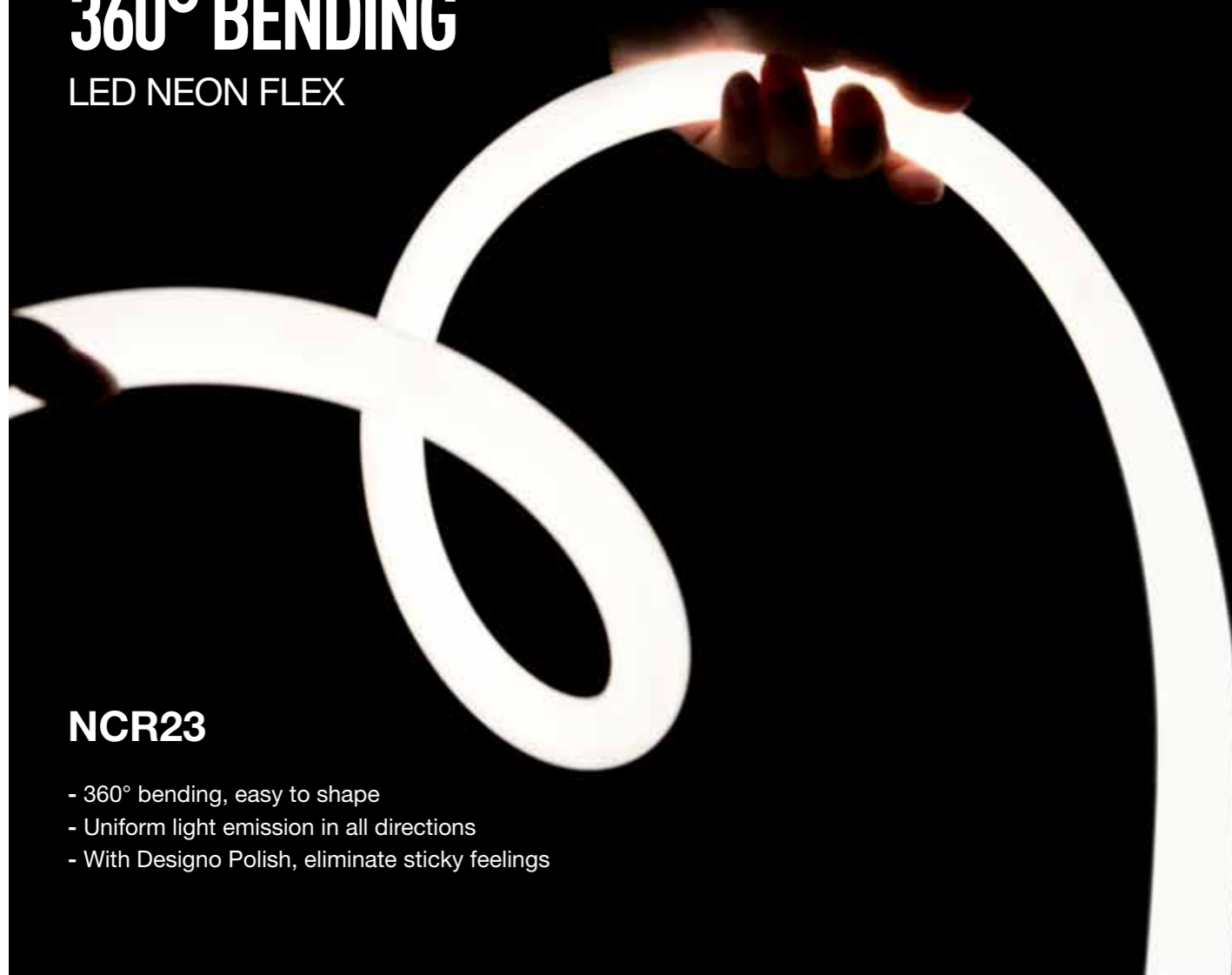
Blueview's Neon products have superior design with exquisite craftsmanship ensure stable and reliable performance.

Designs including side bending, top bending, 360° lighting, Neon cover, etc.



360° BENDING

LED NEON FLEX



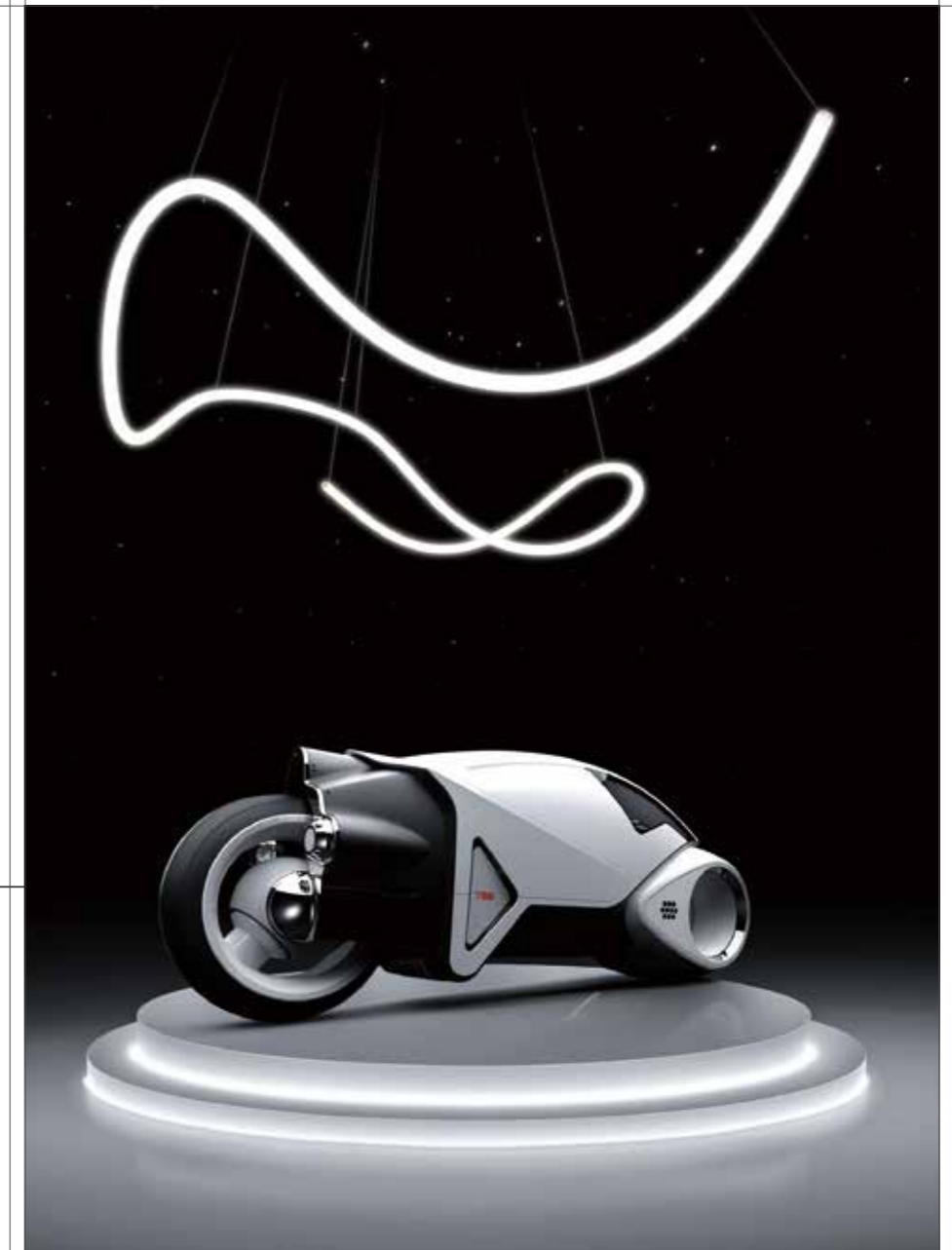
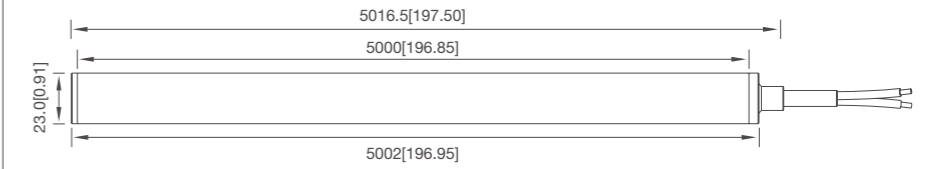
NCR23

- 360° bending, easy to shape
- Uniform light emission in all directions
- With Designo Polish, eliminate sticky feelings

Light Color :	Single color
Ra :	>80
CCT (K) :	4000
Luminous Flux (lm/m) :	1466
Efficacy (lm/W) :	90.5
Voltage (V DC) :	24
Power (W/m) :	16.0

Light Color :	Red	Green	Blue	RGB
Luminous Flux (lm/m) :	108	498	103	696
Efficacy (lm/W) :	17.8	67.0	15.6	35.4
Voltage (V DC) :	24.0	24.0	24.0	19.2
Power (W/m) :	6.4	6.4	6.4	6.4

Note: all available colors including white/ red/green/blue/yellow/orange/RGB.



TOP BENDING NEON FLEX

- Multiple colors available.

- Waterproof IP67/68 available.

- Stable and reliable performance.

NDF1212

Color options:
Single color / Tunable white / RGB.



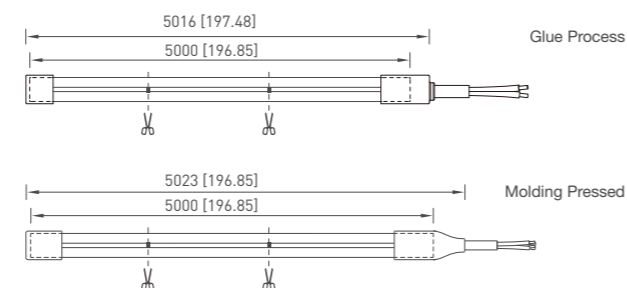
NDF1005

Color options: Single color



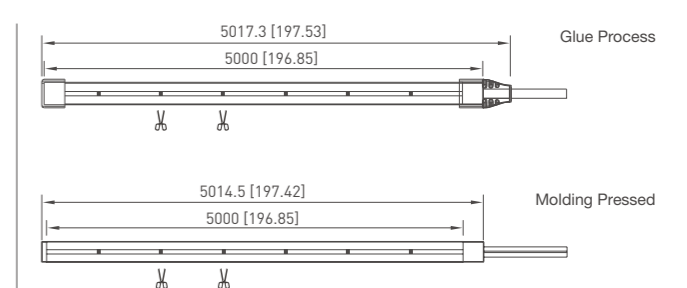
NDF1212-Single color

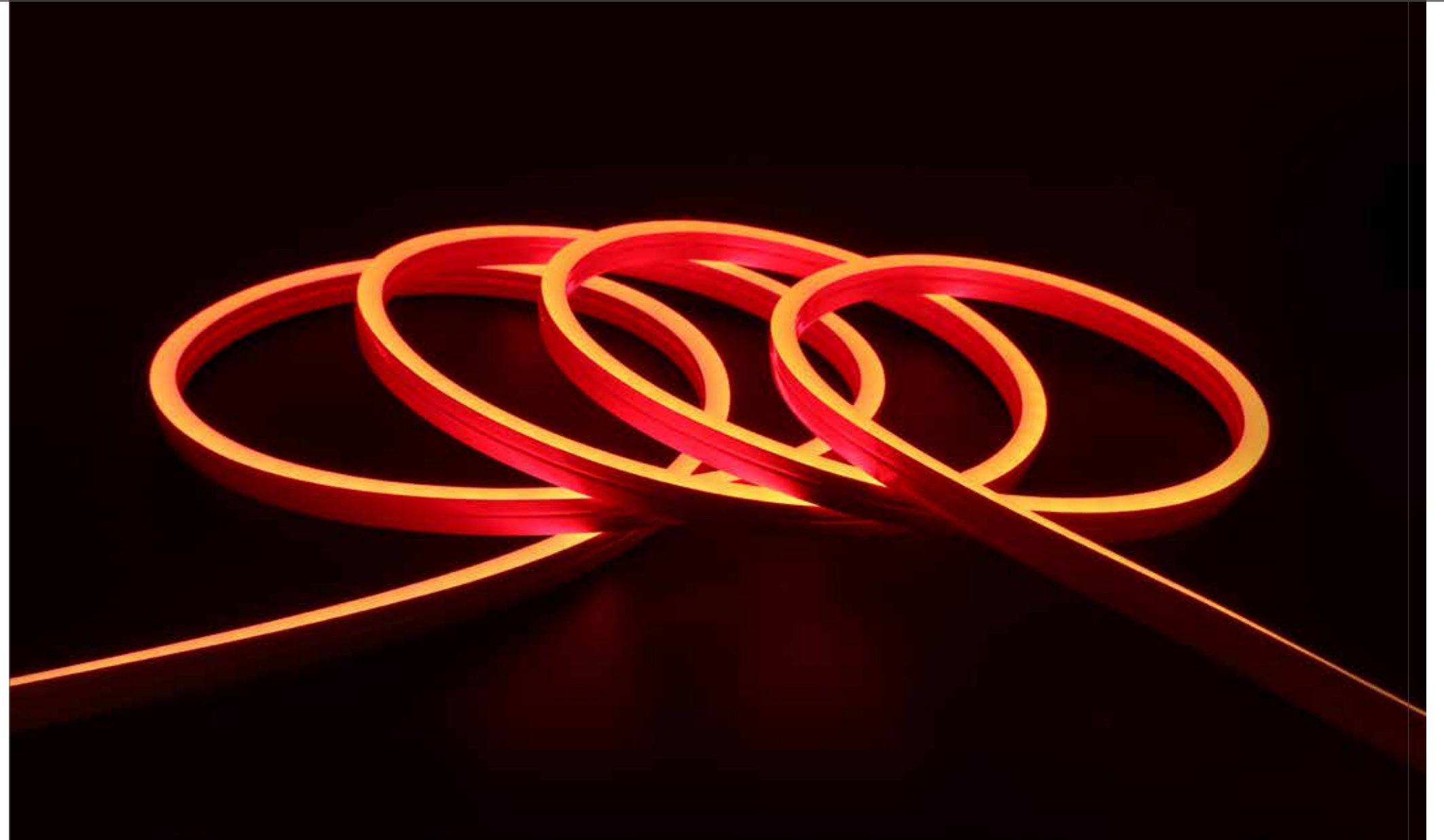
Color :	4000K	Red	Green	Blue	Yellow	Orange
Ra :	>80	/	/	/	/	/
lm/m :	734	260	758	154	184	304
lm/W :	62.8	22.3	65.0	13.2	16.0	26.1
W/m :	11.5	11.5	11.5	11.5	11.5	11.5



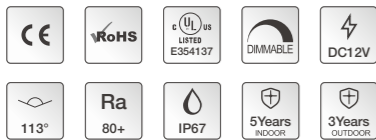
NDF1005-Single color

Color :	4000K	Red	Green	Blue	Yellow	Orange
Ra :	>80	/	/	/	/	/
lm/m :	470	45	510	98	48	40
lm/W :	63.0	6.0	71.0	13.0	6.0	5.0
W/m :	7.2	7.2	7.2	7.2	7.2	7.2





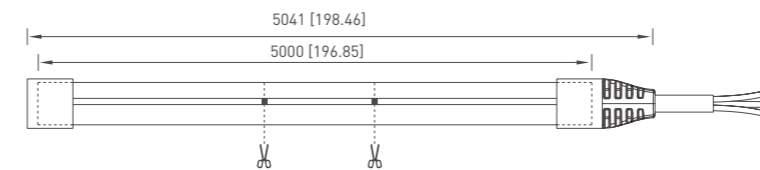
NSF0612



Strong weather resistance
Small in size, easy to install
External controller/dimmer support

NSF0612-Single color

Color :	3900K	Red	Green	Blue	Yellow
Ra :	>80	/	/	/	/
lm/m :	218	86	114	39	201
lm/W :	19.3	7.2	9.5	3.3	16.8
W/m :	12.0	12.0	12.0	12.0	12.0



SIDE BENDING NEON FLEX

LED STRIP LIGHT

There are many kinds of products including mini series, high efficacy series, long run series, etc., which support customization to meet various needs of customers.

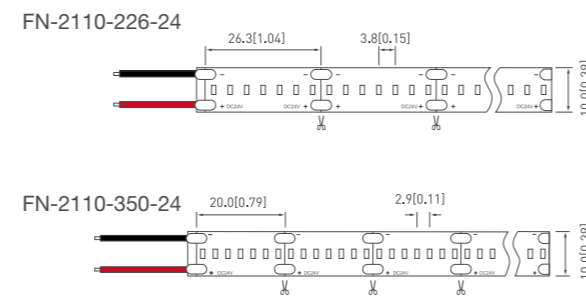




FN-2110-266/350-24

Suitable for small advertising signs such as advertising light boxes, handicrafts, path lighting and logo outlines, etc

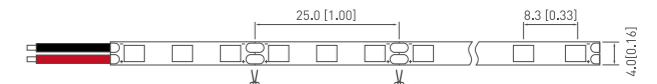
Model No :	FN-2110-226-24	FN-2110-350-24
Light Color :	W	W
Color Available (K/nm) :	4000	4000
Ra :	90 / 95	90 / 95
Luminous Flux (lm/m) :	1258 / 1153	1425 / 1306
Efficacy (lm/W) :	92 / 98	99 / 91
Voltage (V DC) :	24	24
Power (W/m) :	13.68	14.4



MN-2835A-120-12

Suitable for signs, advertising light boxes, decoration lighting, special clothing, handicrafts, linear lighting, etc.

Model No :	MN-2835A-120-12
Light Color :	W
Color Available (K/nm) :	4000
Ra :	>80
Luminous Flux (lm/m) :	1960
Efficacy (lm/W) :	100
Voltage (V DC) :	12
Power (W/m) :	9.6





FCOB
HIGH COST
EFFECTIVE

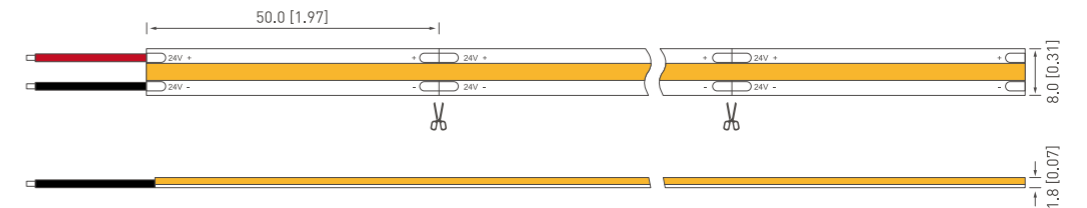
Model No :	FN-2110-226-24
Light Color :	W
Color Available (K/nm) :	4000
Ra :	>90
Luminous Flux (lm/m) :	888
Efficacy (lm/W) :	89
Voltage (V DC) :	24
Power (W/m) :	10.0



FN-FC-480-24



Good linear effect for container and display rack lighting, wardrobes, dark grooves, wall corners, shopping malls, entertainment clubs and so on.





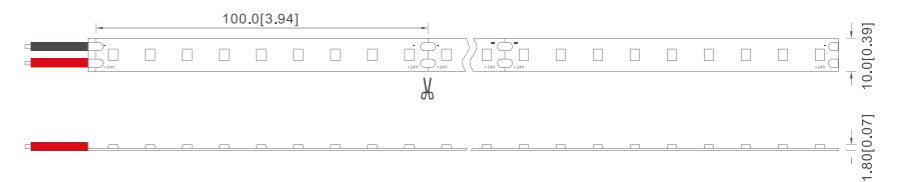
FN-H2835K-90-24

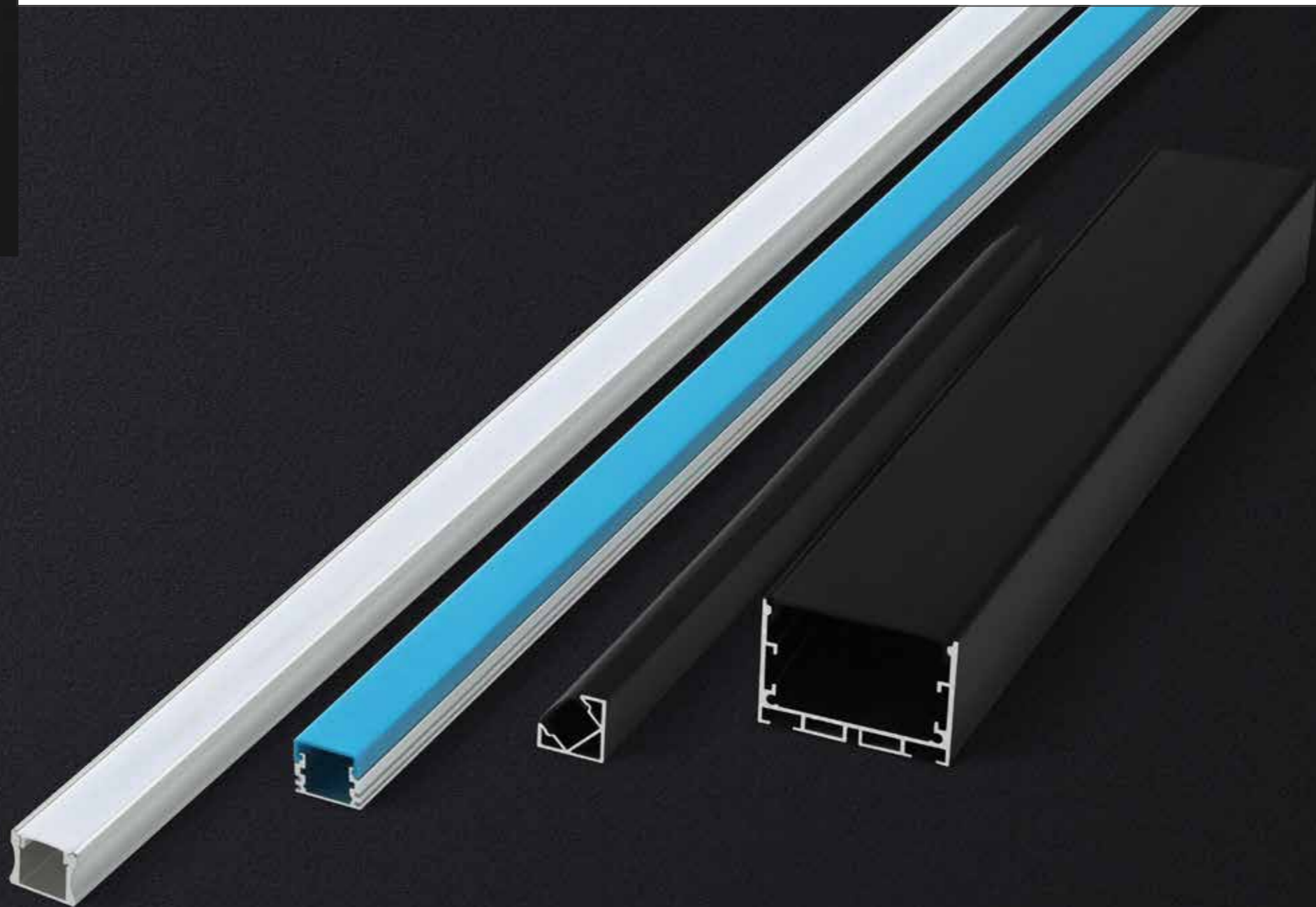


Suitable for the lighting of hotels and high-end commercial complexes.

SUPER HIGH EFFICIENCY H2358K STRIP

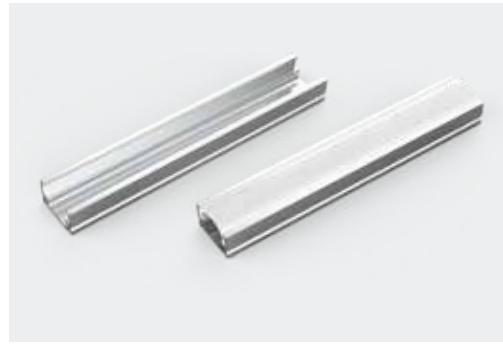
Light Color :	W
CCT (K) :	4000
Ra :	>80
Luminous Flux (lm/m) :	1042
Efficacy (lm/W) :	217
Voltage (V DC) :	24
Power (W/m) :	4.8



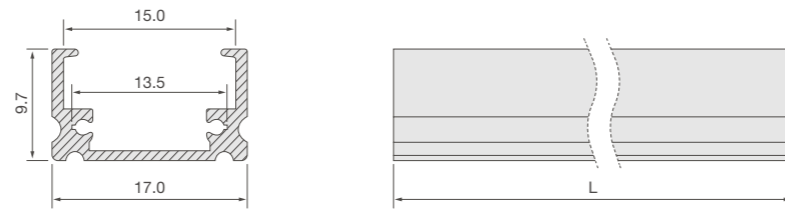


ALUMINUM PROFILE

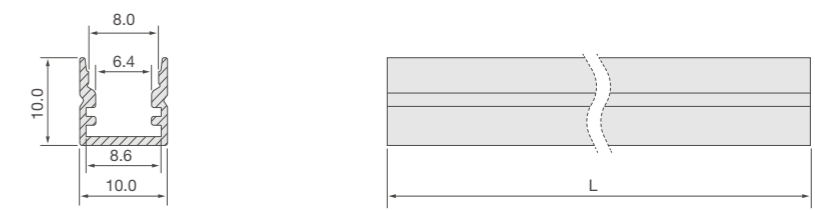
Blueview profiles are made of high-quality 6063 aerospace aluminum with a silver anodized surface, a press-fit PC cover and push-fit plugs. Suitable for indoor lighting, with humanized design, it can bring a comfortable experience.



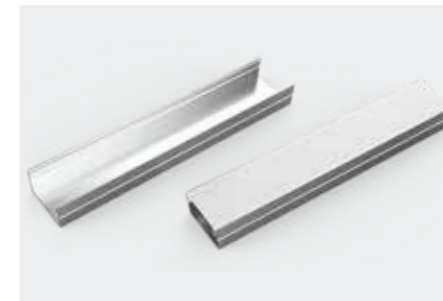
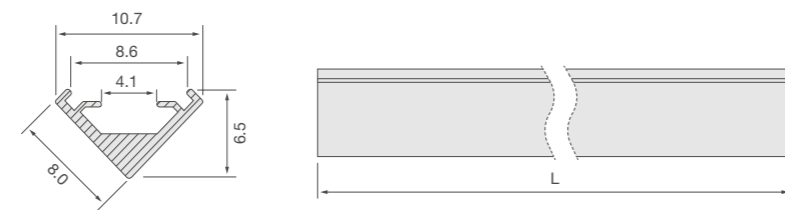
Model No : LU1709



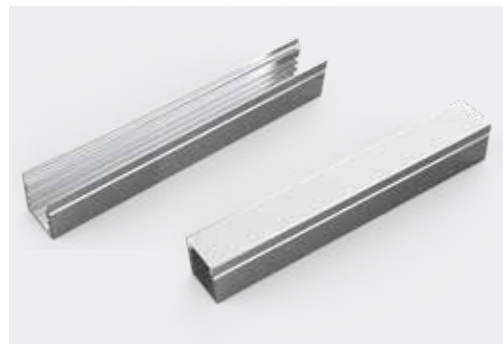
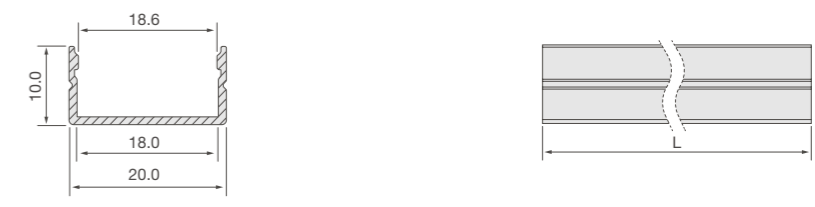
Model No : SL101008-A



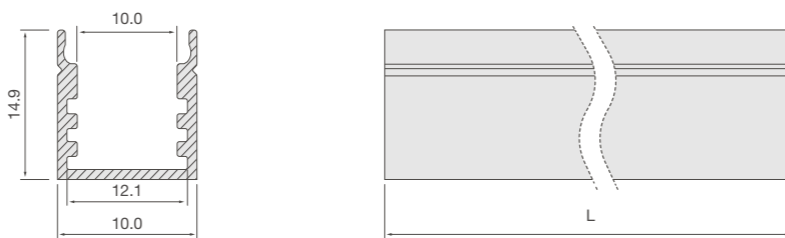
Model No : SL080804



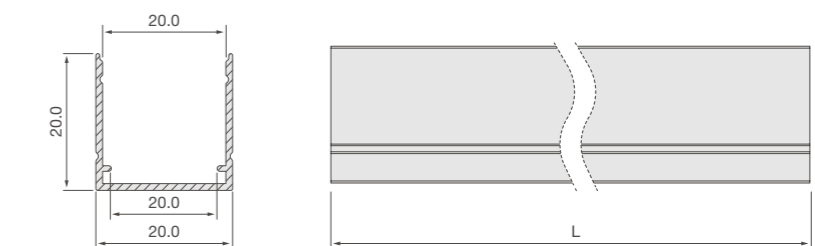
Model No : SL201017-A



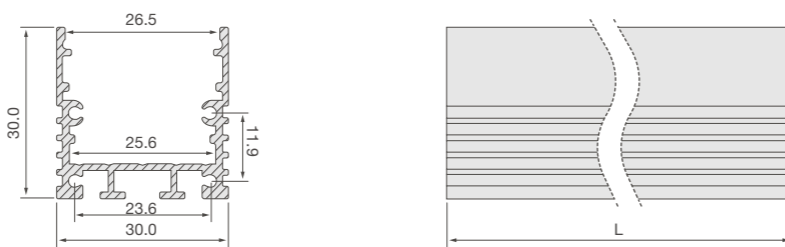
Model No : SL141512



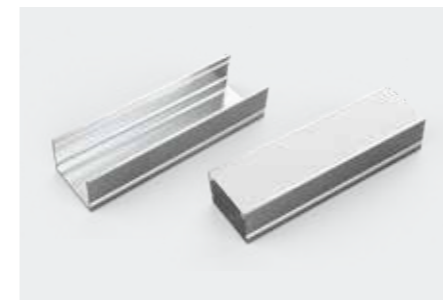
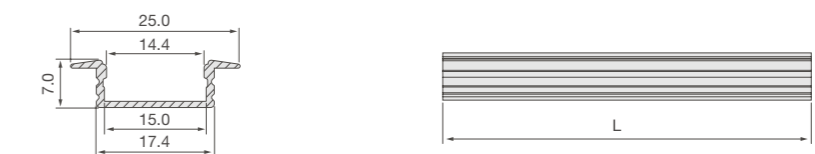
Model No : SL202017-A



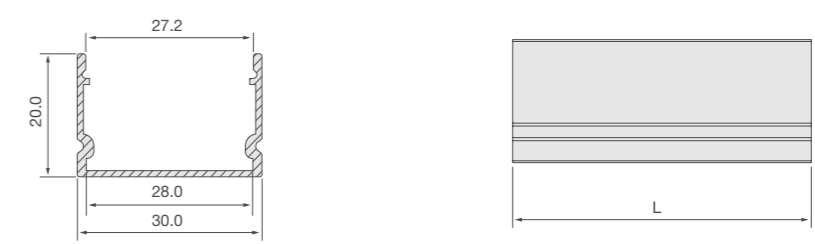
Model No : SL303025-A



Model No : SL250712-A



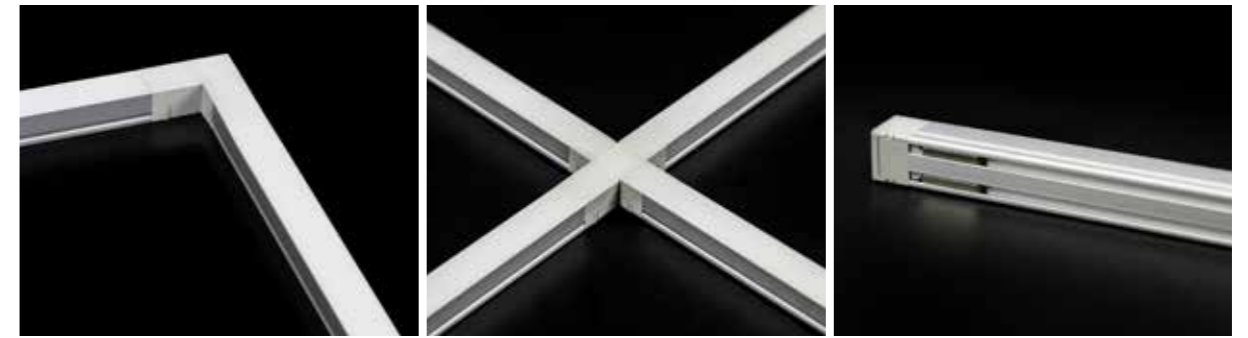
Model No : SL302027-A



Seamless Rigid Bar

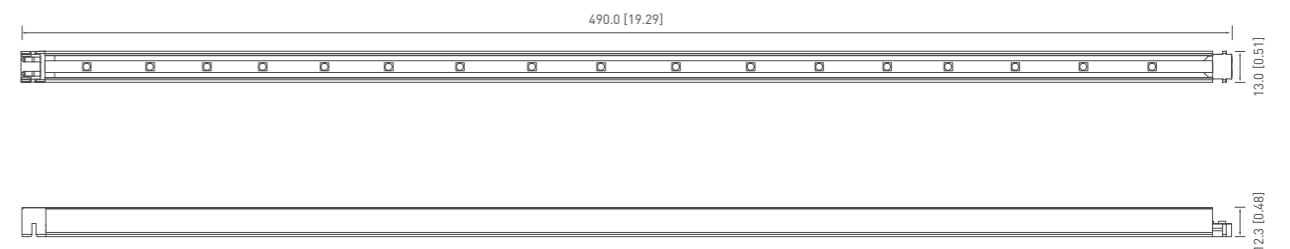
LED MODULAR LIGHTING SYSTEM

CG2-B

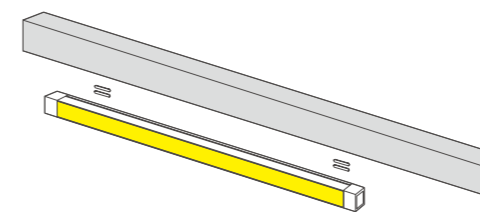


Application

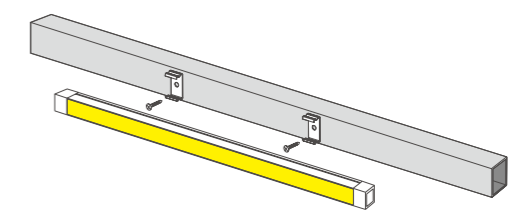
Suitable for the lighting of shelves, cabinets, display rack, props, etc



Installation



Magnetic Mounting



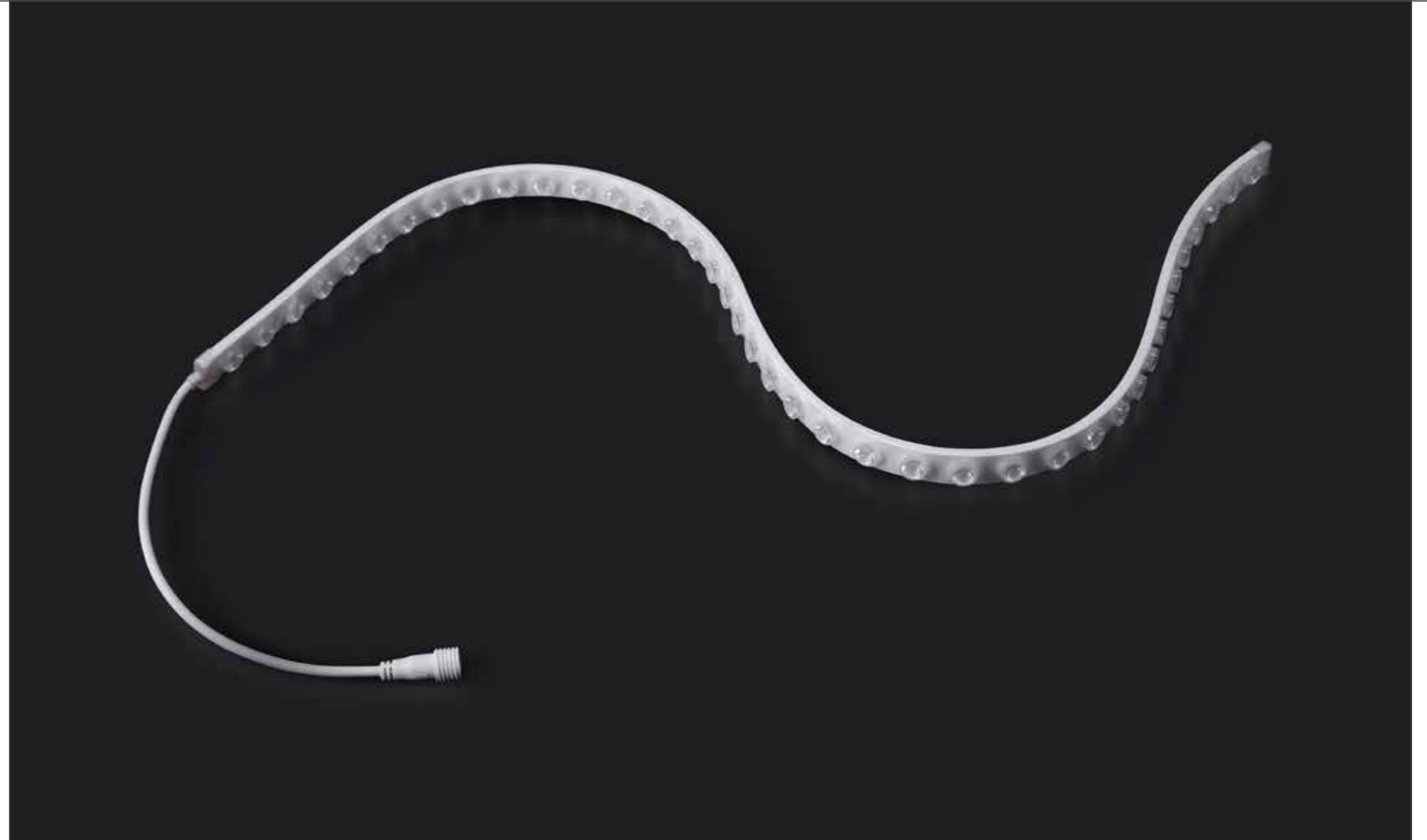
Fixed Mounting

Features

- No dark spot at the linkage point for continuous seamless effect
- Super slim linear LED with spot free high output
- Quick connection system
- Perfected with color consistency
- Various mounting methods including magnetic



OPTICAL STRIP

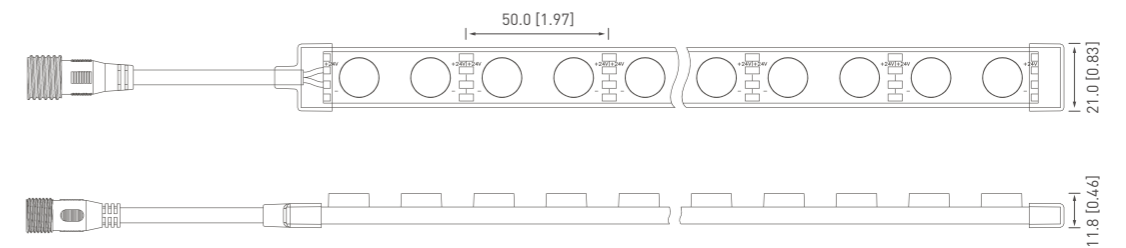


FO2835-40-24



Professional optical lens design
 IP67 rating
 30°, 60° degree available
 Delivering a perfect continuous smooth lighting

Model No :	FO2835-40-24
Light Color :	W
Color Available (K/nm) :	4000
Ra :	>80
Luminous Flux (lm/m) :	2450
Efficacy (lm/W) :	102
Voltage (V DC) :	24
Power (W/m) :	24





BLUEVIEW ELEC-OPTIC TECH CO.,LTD

□ Tel: +86-28-8148 0011
□ Fax: +86-28-8148 1258

□ Web.: www.blueviewled.com
□ Email: sales@blueviewled.com

□ Add.: No.1000,section 2, Konggang 2nd Road,
Shuangliu, Chengdu 610207, sichuan, CHINA